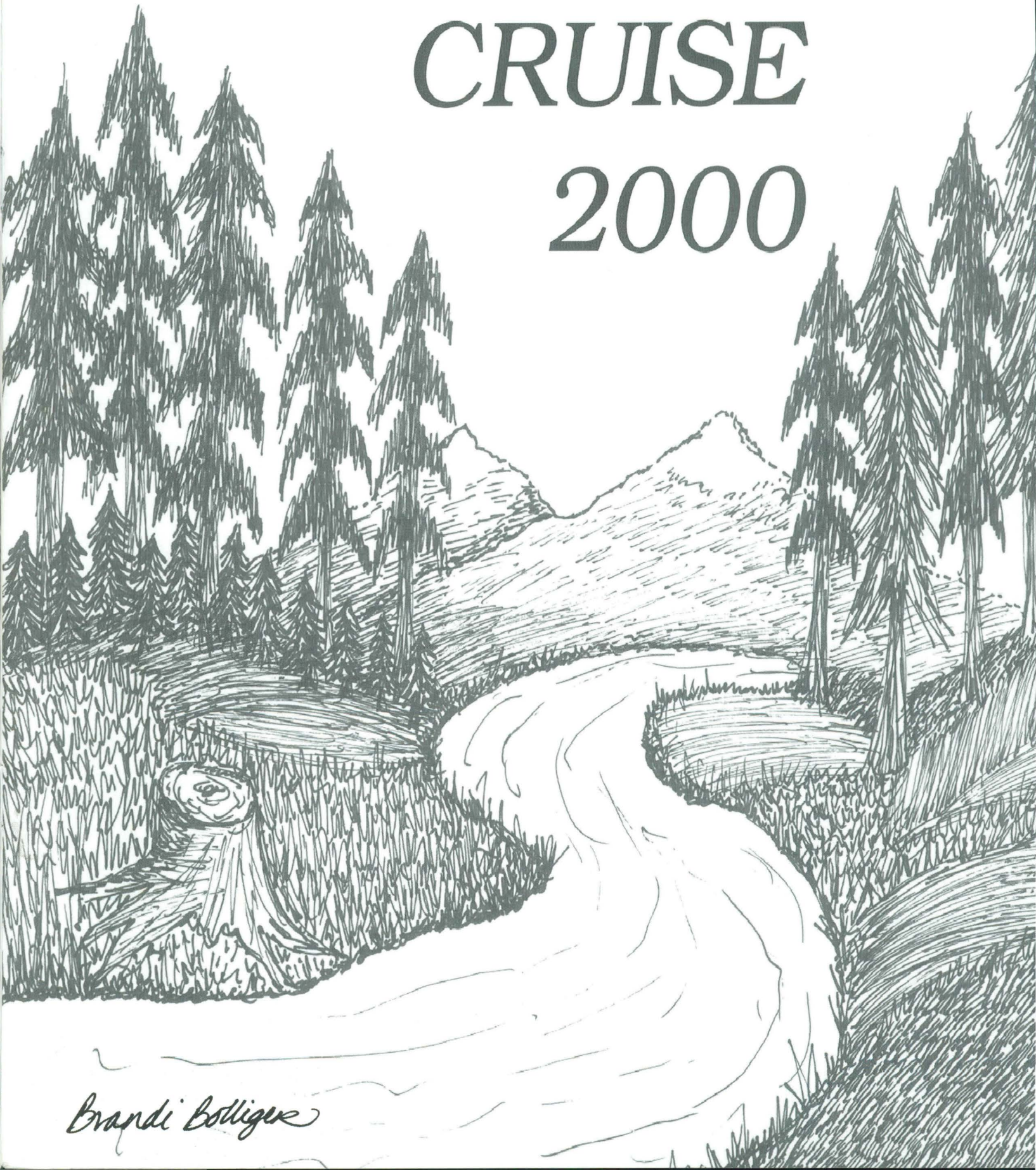


# ANNUAL CRUISE 2000

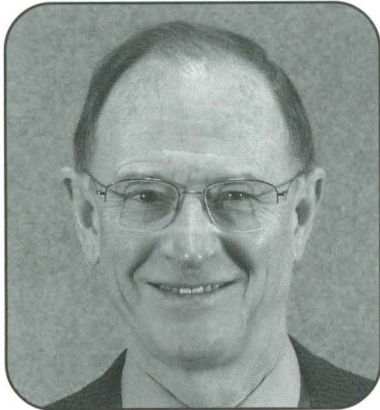


*Brandi Bolliger*

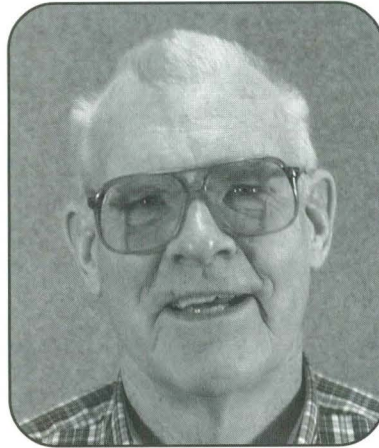


# DEDICATIONS

This year's Annual Cruise goes out to those who are retiring. Thank you for your dedication to the College of Forestry. May the future bring happiness and relaxation.



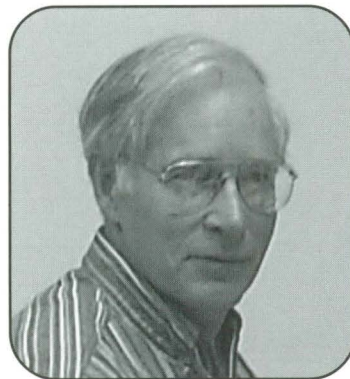
Logan Norris  
(December 31, 2000)



Mike Newton (July 1, 2000)



Pam Henderson (Summer 2000)



Dick Waring (June 2000)

Jerry Hull (not pictured) is retiring this year. Thanks for all your wonderful work at the help desk.

# TABLE OF CONTENTS

<b>Dean's Outlook.....</b>	<b>2</b>
<b>Words From The Editor.....</b>	<b>3</b>
<b>Welcome to Hal.....</b>	<b>4</b>
<b>Current Events.....</b>	<b>5</b>
<b>Activities</b>	
Ag Days.....	8
Recreation Field School.....	9
<b>Students And Faculty</b>	
Dean's Headquarters.....	12
Student Services & development Department.....	13
Forest Engineering.....	14
Forest Products.....	20
Forest Resources.....	24
Forest Science.....	30
Forestry Media Center & Computer Support.....	32
McDonald-Dunn Research Forest.....	33
<b>Clubs And Organizations</b>	
Society of American Foresters.....	35
Xi Sigma Pi.....	36
Natural Resources Club.....	37
Forestry Club.....	38
Logging Sports Team.....	40
Conclave.....	42
Recreation Club.....	44
<b>Richardson Hall.....</b>	<b>46</b>
<b>Fernhopper Day.....</b>	<b>48</b>
<b>Awards.....</b>	<b>49</b>
<b>Advertisements.....</b>	<b>50</b>





## *Dean's Outlook*

There's nothing magical about the shift from one year, one century, or even one millennium to the next; it's simply the inevitable progression of time, with the actual moment of change measurable in a heartbeat or a blink of an eye. But there's something about the very certainty of these natural transitions that compels us to reflect upon where we've been and what we've accomplished (or not!) in the period just ending.

The College of Forestry in the Year 2000 has a fine opportunity to reflect and to look ahead in terms of our educational programs and our other enterprises that complement and support those programs. Within the next 18 months, Oregon State University and also the professional education programs of the College of Forestry will be evaluated by the Northwest Association of Schools and Colleges, as well as by the Society of American Foresters and the Society of Wood Science and Technology.

The self-evaluations required as preface to the team visitations give us a chance to take stock of our current educational, research, and outreach programs and to make adjustments and changes, as needed. What we are aiming at is maintaining and improving upon our reputation for producing top-notch graduates who come to employers with both the necessary entry-level skills plus the potential to move upward in their organization as well as in their chosen profession. And we also need to make sure that we are provide our alumni, and others, with the very best research and extended education base to support their life-long career needs.

So we'll be looking closely at the depth and breadth of our undergraduate and some of our graduate programs and measuring them against 21st-century issues and challenges. We'll do the same analyses with our support programs, including the international aspects of our research and educational efforts. And we'll be highly concerned with how we'll be able to fund all of our programs in a fiscal environment where we're constantly required to find new sources of funds to replace the ever-dwindling levels of state support.

We'll soon have a new Dean – Dr. Harold (Hal) Salwasser – to provide leadership to the College as we tackle the 21st-century issues before us. Hal will be joining us directly from a distinguished federal career, and he'll take a healthy “new look” at where the College needs to go relative to the broader sphere of activities in forestry, forest products, and related areas. Our administrative team is looking forward to working with Hal, our fine faculty and staff, and our super students to maintain our College of Forestry's great international reputation and to meet your career needs as students, alums, and colleagues.

Last but not least, I've greatly enjoyed serving as your Interim Dean over the past two millennia! To those who'll graduate before our 2000 Annual Cruise is published, my best wishes for successful careers. And to all of you, have an enjoyable and productive summer.

Bart A. Thielges  
Interim Dean



# Words from the Editor

I am very proud to present the 2000 Annual Cruise to you all. This has been a major achievement for myself as well as the rest of the cruise staff. Our intent was to include personal touches in this year's cruise. We hoped to reach each and every one of you in some memorable way. May the following pages bring back fond memories of your time spent with the College of Forestry.

Many obstacles have been encountered in the development of this year's book. With the encouragement from Gail Wells, I was inspired to organize this publication. I would like to personally thank **Gail** for her inspiration, support and words of encouragement. **Mark Reed**, thank you for your expertise in setting up our professional photography studio. **Judy Sitton**, thank you for your flexible scheduling, supplies and help with picture set-up. **Bonnie Johnson**, thank you for your time organizing and gathering pictures for the Forest Products department. **John Sessions** and **Steve Tesch**, thank you for your continuous encouragement. Thank you to all the **students** and **faculty** who showed their support by getting their picture taken and providing department or club information with such short notice. A huge thank you to **Doug Grayburn**, for restoring the student pictures which were destroyed by the "I LOVE YOU" bug. Last, but not least, a million thanks to **Michelle Hadley**, **Macrina Savko** and **Cody Lesniak** for your long hours of hard work and dedication. Thank you.

The College of Forestry is more than just school or work for most of us. There is a rare sense of closeness amongst students and faculty as one wanders down the halls of Peavy and Richardson Hall. Not only is this a great place to learn about forestry, but life lasting experiences and friendship are created. I have experienced first hand examples of this while creating the Annual Cruise. Everyone has been so helpful. It has been wonderful working with all of you.

As you reflect back on your time here, I encourage you to move into the future with many accomplishments and achievements. Keep in mind, we impact each other everyday of our lives. Focus on the most important things in your life, get involved, be positive, tell people how you feel, have faith and most of all...SMILE. Thanks again to all who helped make this year's Annual Cruise a success.

God Bless,

*Brandi Bolliger*

Brandi Bolliger  
Annual Cruise Editor



Macrina, Cody,  
Brandi, Michelle

## Meet the Staff:

**Inspirator and Support Staff:** Gail Wells

**Editor and Main Motivator:** Brandi Bolliger

**Layout Queen:** Michelle Hadley

**Crazed Professional Photographer:** Macrina Savko

**Scan Master:** Cody Lesniak

**Photo Helpers:** Niel Danko and Laura Quilliams

**Start Up Crew:** All the above + Alex Dunn, Billy Dunn,

Carson Hundrup, Heather Murphy

**Advertisements:** All the above



# WELCOME TO HAL, THE NEW DEAN OF COF



Hal Salwasser will be officially welcomed as the new Dean of the College of Forestry July 1, 2000. For the past two years Hal has directed the U.S. Forest Service. As chief executive officer of the Pacific Southwest Research Station, Salwasser supervises the natural resources research and development of 65 scientists in California, Hawaii, and the Pacific Islands. He is responsible for an annual federal budget of more than \$17 million and a staff of 320 employees.

Except for one three-year stint from 1992 - '95 as Boone and Crockett Professor of Wildlife Conservation at the University of Montana, Hal has worked for the U.S. Forest Service for most of his professional career. He began as a regional wildlife ecologist in the Pacific Southwest Region in 1978, the year before he received his doctorate in wildland resources science from the University of Berkeley. While with the Forest Service, Salwasser also has been the national wildlife ecologist, deputy director of Wildlife and Fisheries, director of New Perspectives, and regional forester.

According to Executive Vice President Roy Arnold, "Hal Salwasser has a background as both a forester and wildlife biologist who understands the importance of balancing productivity needs of our forests with the protection of their biodiversity," Dean Emeritus George Brown adds, "Hal brings experience from both research and management of our nation's forests, along with the perspectives of a wildlife biologist, and he's a person with a demonstrated leadership talent."

Hal will be leading a 106-year-old forestry program with an annual teaching and research budget of more than \$20-million, which includes management of OSU's 15,000-acre research forest complex. The College of Forestry has about 100 faculty in its four departments and an enrollment of about 400 undergraduates and 150 graduate students. He will also direct the Forest Research Laboratory (FRL), the College's research arm.

As the students of the College of Forestry we say "Thank you, **Bart Thielges**, for your hardwork and support over the last year as Interim Dean. And we wish you, **Hal**, the best as you join the wonderful, fun-filled students, educators, researchers and staff of the College of Forestry."

Hal's initiation to COF began at Fernhopper sawing with Janine Stenback





# CURRENT EVENTS

## Drug trade camps in national forests

Forest poachers raid  
undergrowth treasure

"LOVE-  
BUG"  
SHUTS  
DOWN BUSI-  
NESS AND  
THREATENS  
CAMPUS

*Collectors vying for moss,  
bark and other products  
sometimes ignore licensing  
rules and land boundaries*

*Four-wheelers,  
motorcycles  
among vehicles  
targeted for ban  
in national parks*

## It's getting pretty noisy on Earth

■ More and more humans  
make it impossible to find  
some peace and quiet these days.

## Environmentalists seek restriction of off-road vehicles

HIGHWAY 101 SHUT DOWN  
DUE TO LANDSLIDES

*Traffickers harvest vast  
quantities of marijuana  
from land owned by the  
federal government*

# ACTIVITIES



No one struts their stuff better than Jacob Steenson and Brandi Bolliger.

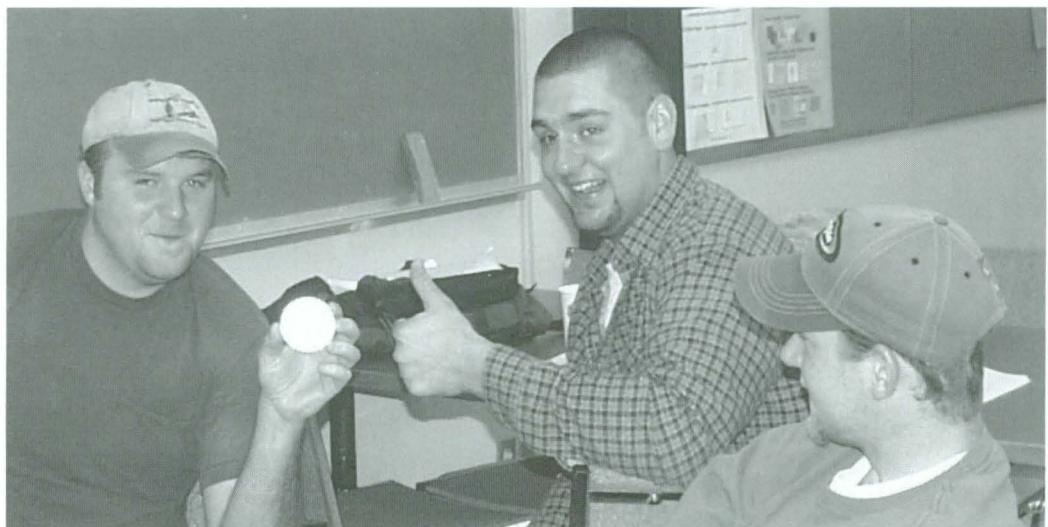


Mac-Cody and Cody-Mac are posing with their pulp.



Above: Three wild and crazy girls on their way to Arcata, California to compete in Conclave.

Right: Eric "Nasty Dog" Davis, Nate Hunter and Mike Warren look like they're really studying hard in the SLC.



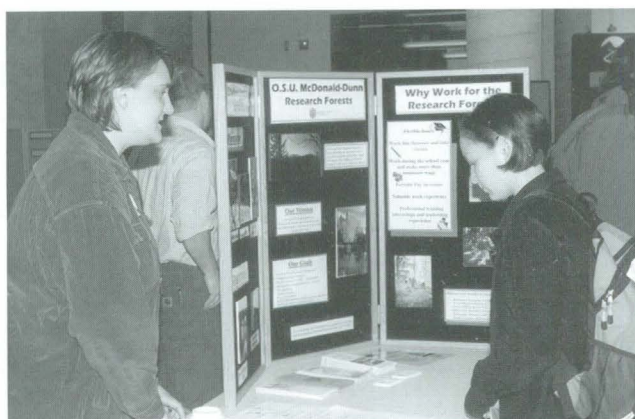


# ACTIVITIES



Friends gather at the annual fall BBQ.

Alex Dunn and Cody Lesniak load up on food at the fall BBQ in hopes to meet new students. Cody did just that and met Mac.



Erin Wilson learns about Mac-Dunn Research forest from Trisha Trueax.

Lone Rock representatives talk with Forrest Costales at the SAF COF Job Fair.



# AG DAYS

Amid blasts of high winds and torrential downpours the College of Forestry OSU Logging Sports Team joined a multitude of clubs and organizations from the College of Agricultural Science to bring Ag Days to the students of Oregon State. Ag Days is designed to educate fellow students about agriculture and forestry. This year's Ag Days included a mechanical bull, Ribeye BBQ, free Tillamook Ice Cream, animal rights activists, chainsaw start-up to mark the hour, and much, much more!

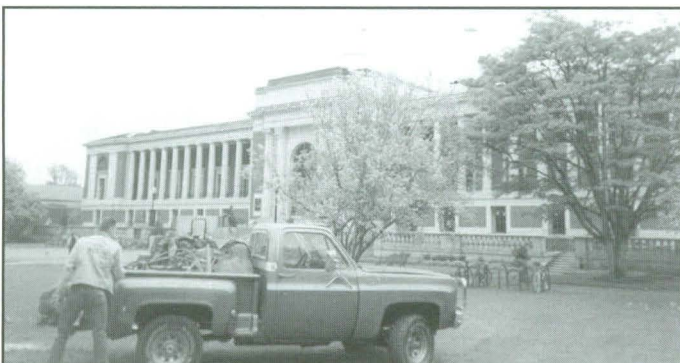


Freshman Jacob Steenson demonstrates the event affectionately referred to as single-puke.

Right: Nate "Cowboy Up" Hunter tries his hand at bull riding.



Members of OSU's Logging Sports Team stop to celebrate Nate's championship ride.



Trucks in the QUAD??? What'll they think of next..yeh, Cody!

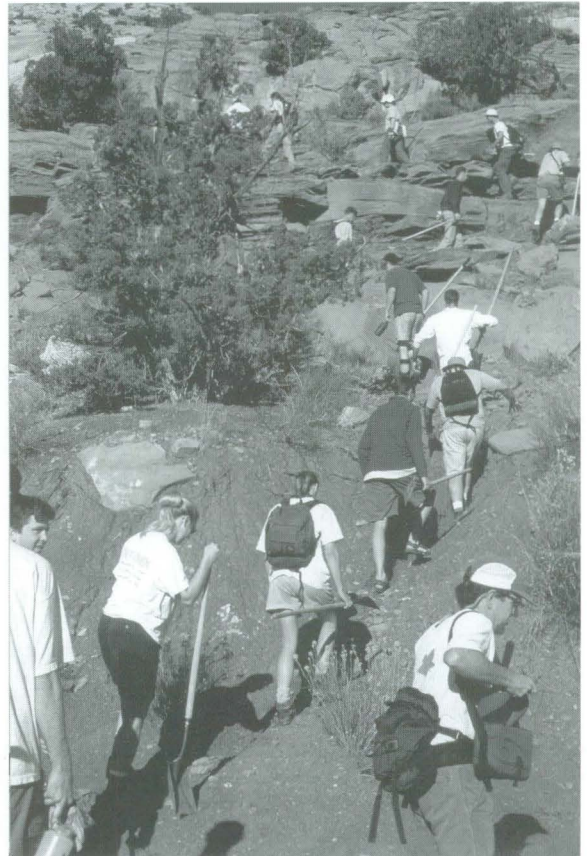


# RECREATION FIELD SCHOOL

RECREATION STUDENTS EXPERIENCE A DIFFERENT REGION



Each September, Recreation Resource students have an opportunity to see recreation issues up close in their Forestry 353 field-school class. Royal Jackson, an advisor and professor, takes recreation students into managed recreation areas across the West. "We work with the best real estate in the country," says Jackson. For the past four years, Jackson has taken the group to the Grand Staircase-Escalante National Monument in Utah.



September 2000 will find the current group of juniors there again for five days, working on projects like rebuilding trails and removing graffiti. They have a chance to work with agency officials and observe management plans in action.

Field school offers students the opportunity to learn about recreation issues in a bioregion outside western Oregon, work with fellow students, and put classroom knowledge into practice in the field.







Thurman James Starker,  
member of the first  
graduating class in Forestry,  
Oregon Agricultural College,  
1910

# Good Forestry

A Starker Family Tradition  
for Over 60 Years

**STARKER FORESTS, Inc.**

P.O. Box 809

Corvallis, OR 97339 -0809

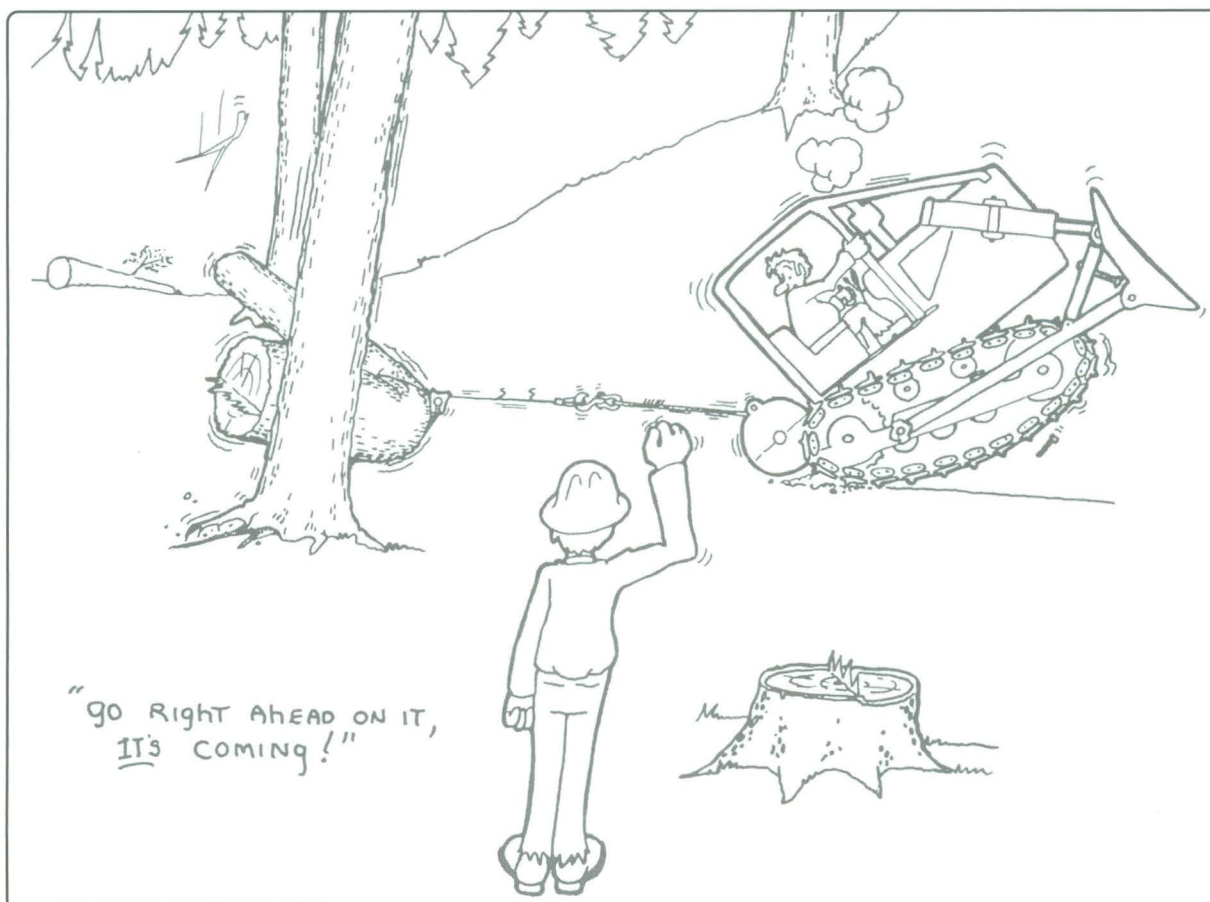
Ph. 541.929.2477

Fax 541.929.2178

[www.starkerforests.com](http://www.starkerforests.com)



0170621825



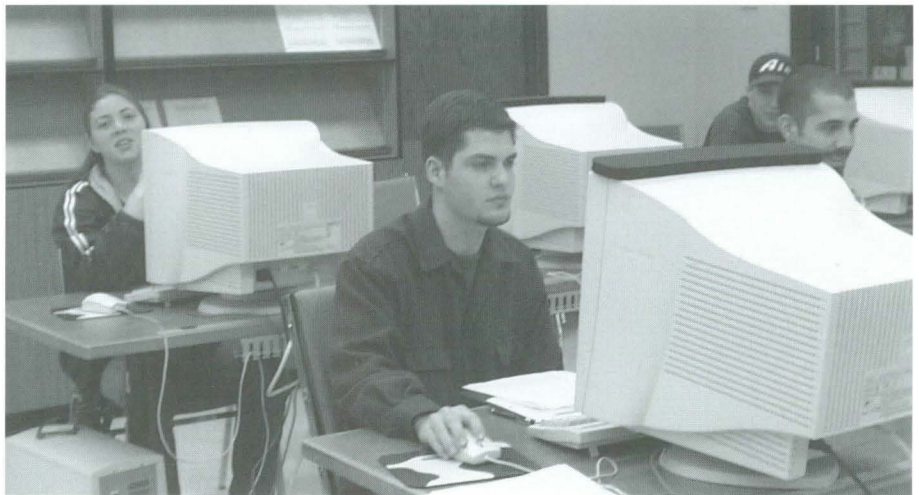


# STUDENTS AND FACULTY



Brian Kramer, Loren Kellogg, and the famous George Brown pause for a memorable moment.

Laura looks on for a better answer, if she can stop being mad at the computer.



Doug continues to dazzle us with his wit and charm.

\*\*\*We apologize to all the students, faculty, and staff who are not pictured.

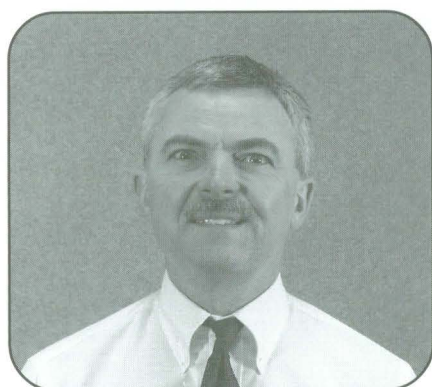
# DEAN'S HEADQUARTERS



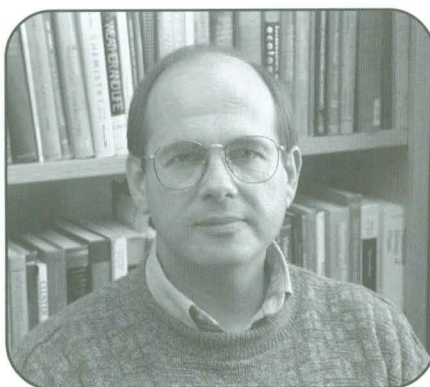
Bart A. Thielges  
Interim Dean



Tresa Stevens  
Dean's Office



Scott Reed  
Associate Dean for Extended  
Education



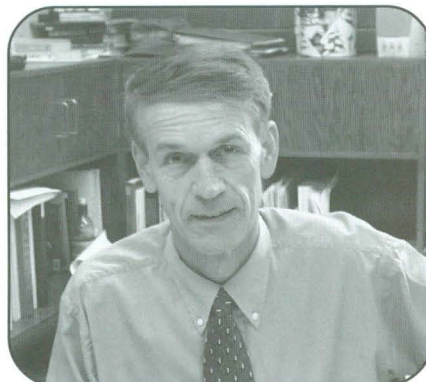
Steve Hobbs  
Interim Associate Dean for  
Research  
and FS Assis. Dept. Head



Becky Johnson  
Assistant Dean for Academic  
Affairs



Loren Kellogg  
Interim Associate Dean for  
International Studies and  
FE Professor



Roger Admiral  
Director of College Services

Not Pictured:  
Jeffrie Husband  
Staff Assistant



# STUDENT SERVICES

(Part of the Dean's Brigade)

Keeping busy on your behalf! -- Recruiting, orienting, giving directions, monitoring progress, scheduling, approving final degree audits, keeping in touch with scholarship donors, and maintaining connections with employers. Greetings, students, you're all wonderful!



Left to Right:

Pam Henderson

Head Student Advisor

Elizabeth Kaiser

Student Services Specialist

Dena Keszler

Academic Services Specialist

---

## DEVELOPMENT DEPARTMENT



Gail Wells

Dean's Office Development Support



Laurie Brendle

Development Associate

The College of Forestry's Development Office helps raise private and corporate gifts to support College teaching, research, and continuing education. The College's Development Director is Marianne Barker of the OSU Foundation. Support comes from Laurie Brendle, Development Associate, and Gail Wells, Communication Specialist.

# FOREST ENGINEERING



Steve Tesch  
FE Department Head

The Department of Forest Engineering at Oregon State University is steeped in tradition as one of the largest and most prestigious of its kind. Since 1913, the department has maintained a mission as one of the premier educational institutions for forest engineers world-wide, providing graduates with the knowledge, methods and skills to carry out environmentally sound forest resource operations. The department boasts a world-renowned faculty and programs in undergraduate and graduate education, research, extension and continuing education that no other forest engineering program can match. The department takes pride in its graduates and their abilities to solve complex engineering problems within the context of managing forests for a variety of resource values -- not as isolated engineering problems. This is what sets the forest engineer apart from all other engineers, and what sets the department apart from all others.

## STAFF

Sandi Labahn and Rayetta Beall



## FACULTY



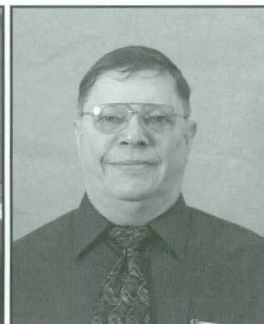
John Garland



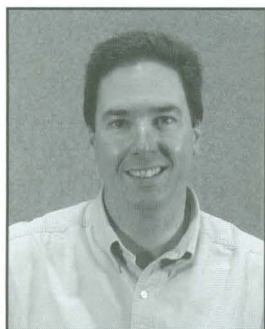
Loren Kellogg



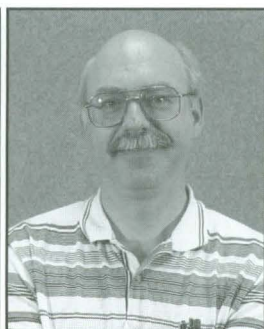
Jim Kiser



Brian Kramer



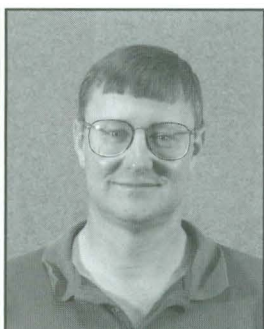
Jeff McDonne'll



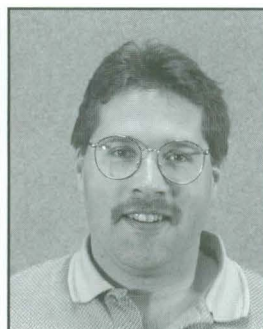
Marv Pyles



John Sessions



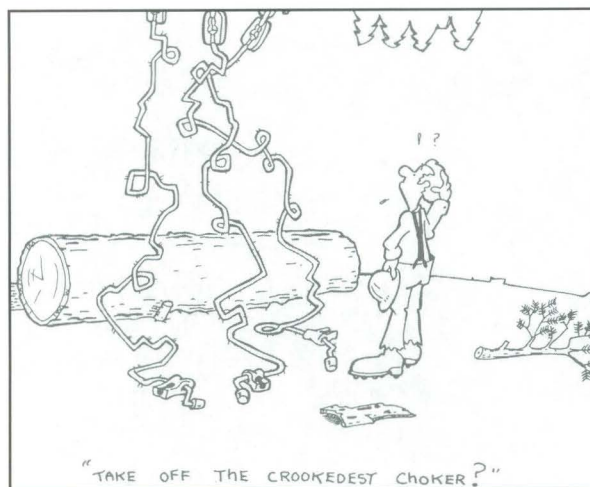
Arne Skaugset



Michael Wing



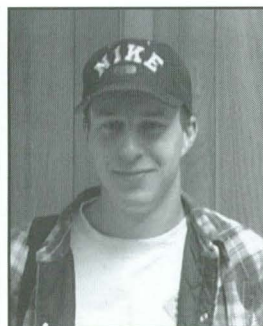
Not Pictured:  
Paul Adams  
Eldon Olsen  
Ben Stringham



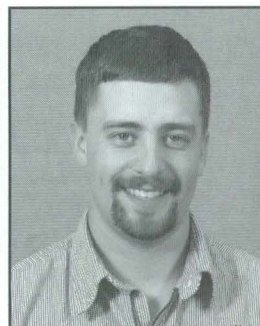
## FE STUDENTS



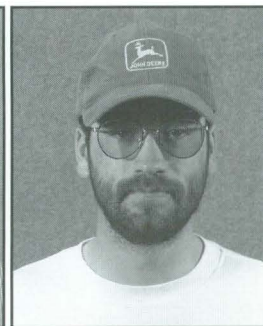
Tim Boyce  
Senior



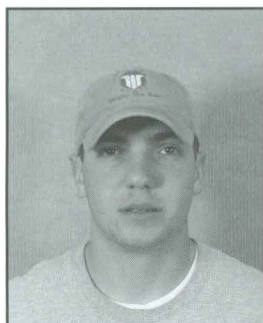
Wayne Cornwall  
Junior



Forrest Costales  
Junior



Neil Danko  
Sophomore



Tyler Douglas  
Sophomore



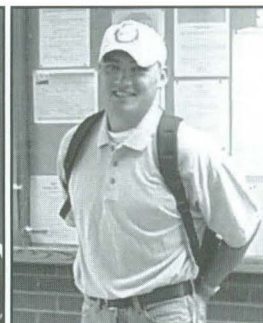
Chrissy Edwards  
Freshman



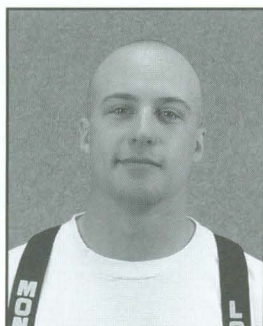
Matt Flock  
Freshman



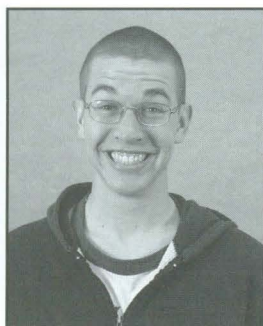
David Grove  
Senior



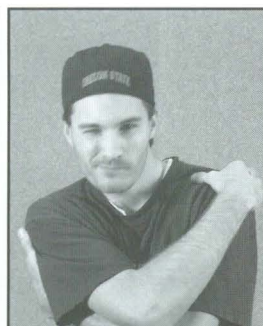
Ben Han  
Senior



Carson Hundrup  
Senior



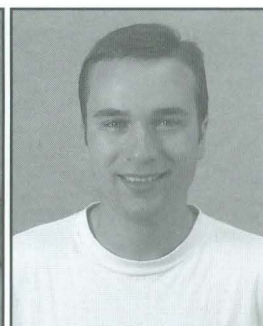
Brian Imlach  
Freshman



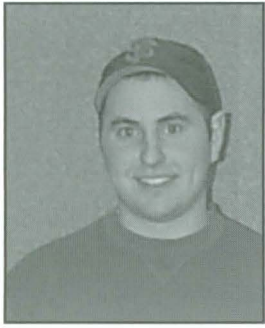
David James  
Senior



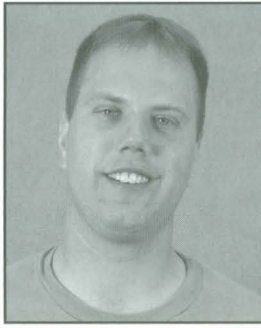
Lisa Jeffries  
Senior



Cody Lesniak  
Junior



Ed Lewis  
Junior



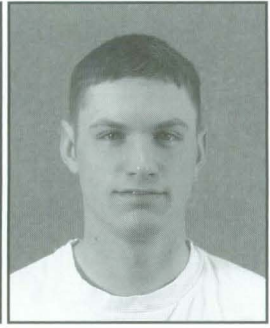
David Nord  
Sophomore



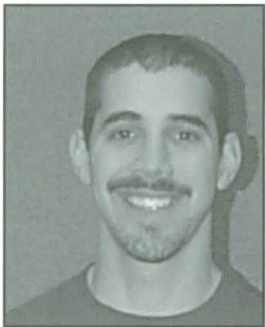
John Ostendorff  
Senior



Seth Sanders  
Senior



Bob Schaffer  
Freshman



Gavin Smith  
Senior



Andrew Weathers  
Senior



Laura Wendling  
Junior

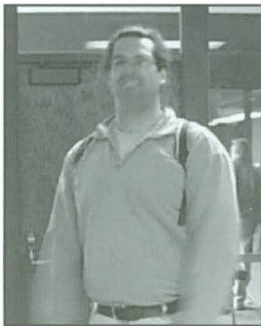


Chad Wheeler  
Junior



Mary Wuertz  
Senior

## FE/CE STUDENTS



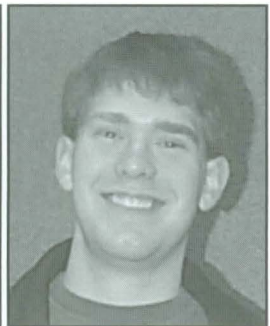
Jay Burgess  
Senior



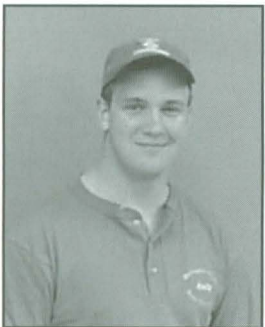
Colin Burnett  
Junior



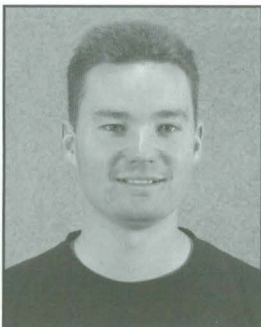
Bill Burton  
Senior



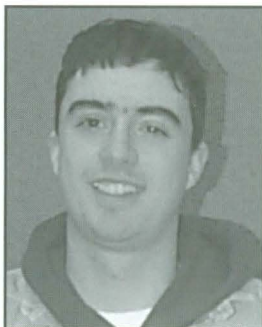
Scott Bushnell  
Sophomore



Andy Conklin  
Sophomore



Alex Dunn  
Sophomore



Matt Fiorito  
Sophomore

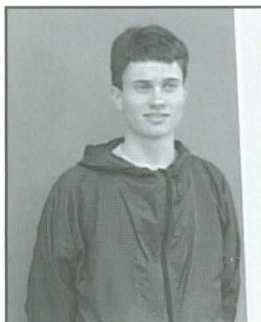


Michelle Hadley  
Senior

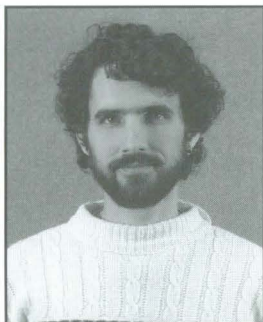


Joshua Heacock  
Freshman



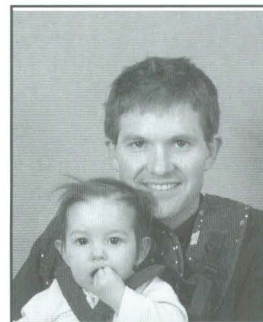


Zach Piepmeyer  
Sophomore

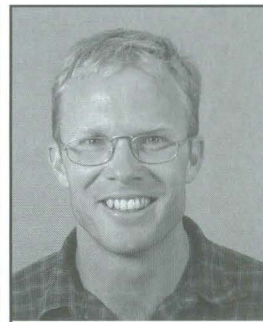


Robert Wortman  
Senior

## GRAD Students

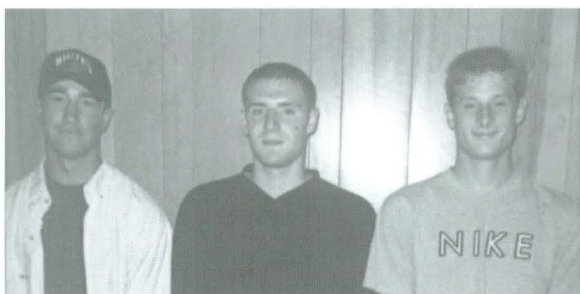


Ross McNeel  
with Daughter Rivers

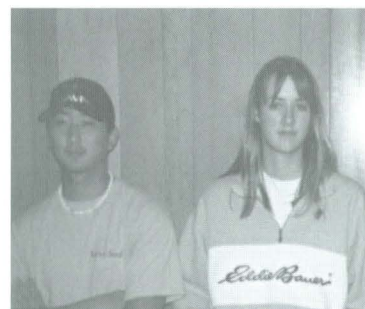


Francois Oberholzer  
Masters

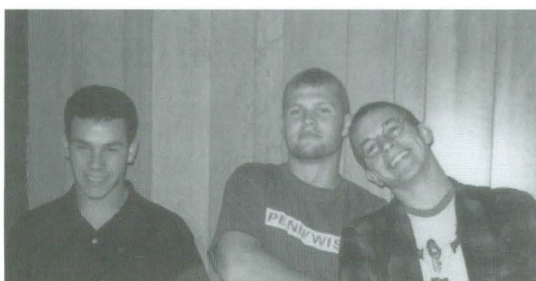
## ADDITIONAL FRESHMEN



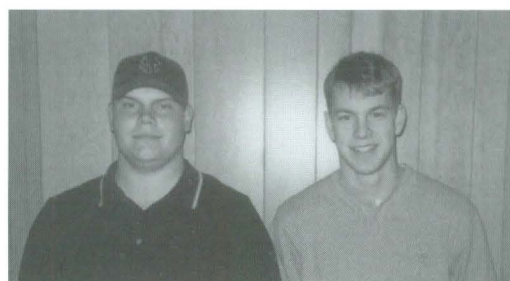
Curtis Pumphrey, John  
Stoffer, Jerry Mizar



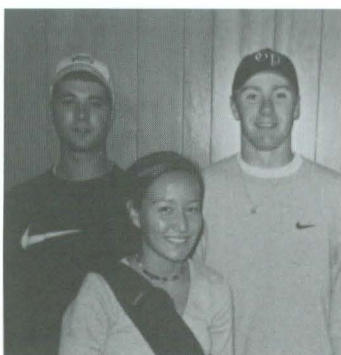
Irwin Oyama, Jill Smouse



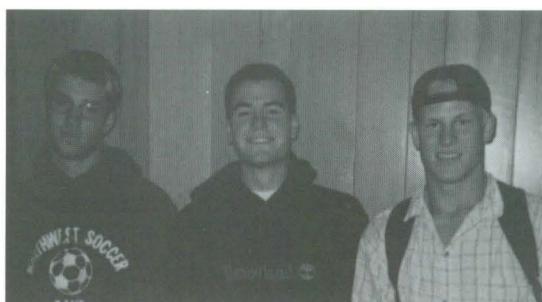
Pat Brown, James Galloway, Brian Imlach



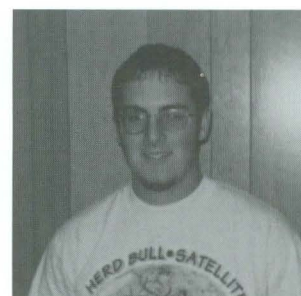
Lonnie Flora, Oliver Pahl



Brian Tenbush, Erin Wilson,  
Wes Jones, Josh Heacock



Chris Proctor, Peter Boone,  
Brian Baker



Darren Lemon

CONGRATULATIONS

# College of Forestry Seniors!

---

from the  
Forest Engineering Department

Sandi Labahn

James W. Kier

Wm. J. J. J.

John J. Garland

J. J. J.

Steve Jach

Brian W. Lerner

W. McDowell

Anne Stangert

Paul Adams

Wm. W.

Wm. W.

Mr. R. P. J.

STEVE PICKERTON

Lois Kellogg

Eldon D. Olson

Brytha Bell



**Congratulations  
Michelle Hadley!**

**You have worked hard, studied  
hard, and played hard  
You are working hard to get your  
goal—2 Bachelors degrees!  
We are very, very, very proud of you!**

**Love, Dad & Mom, Tricia, Nicki, Forrest,  
Frosty, and Lady**

**Ted O. McArthur,**

Congratulations, we are proud of your  
accomplishments and look forward to  
your proceeding to graduate school and a  
career. Your teenage ecological work  
took!

Love, Mom & Dad

**SENECA JONES TIMBER COMPANY**

**&**

***Seneca Sawmill Company***

**Managing today's resources for tomorrow**

---

We work together to practice sustainable forestry  
on 165,000 acres of timberland and provide  
quality dimension and stud lumber products

*For more information, visit our website at [www.senecasawmill.com](http://www.senecasawmill.com)*

---

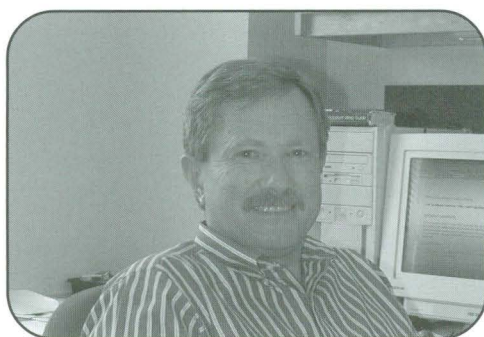
**Seneca Jones Timber Company**

Post Office Box 10265  
Eugene, Oregon 97440  
(541) 689-1231

***Seneca Sawmill Company***

Post Office Box 851  
Eugene, Oregon 97440  
(541) 689-1011

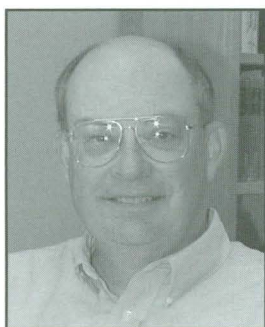
# FOREST PRODUCTS



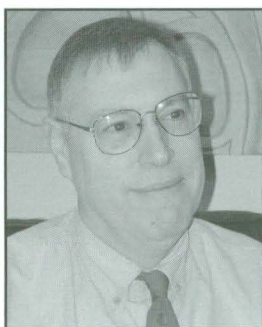
Tom McLain  
Professor and Department  
Head

The Forest Products Department prepares students for a broad range of careers requiring management and technical expertise with a focus on the manufacture and the use of wood-based products. Because the demand for these products is increasing globally, OSU Forest Products graduates are often the innovative leaders in maximizing the utilization and value of available forest resources to meet these needs. And they are in high demand! Both faculty and students in the Forest Products Department are heavily involved in multidisciplinary research in fields ranging from engineering to microbiology to marketing to chemistry to tree physiology, and many in between. Outreach to the public and continuing education to professionals round out the many activities of the faculty and staff that enable graduates to continue to draw on OSU to enhance their careers.

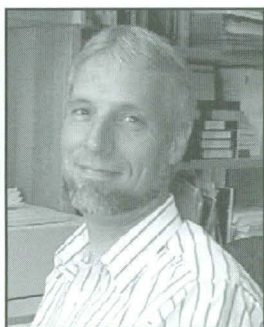
## FACULTY



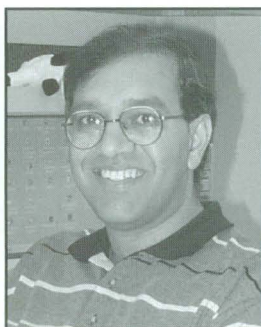
Terry Brown



Charles Brunner



Jim Funck



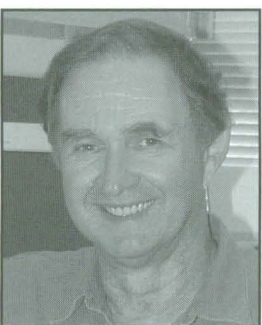
Rakesh Gupta



Eric Hansen



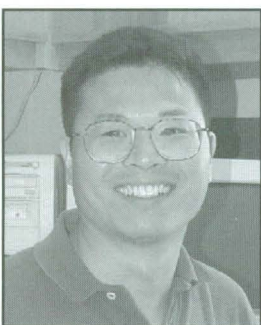
Philip Humphrey



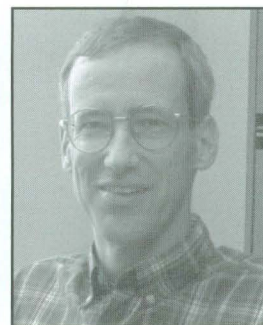
Joe Karchesy



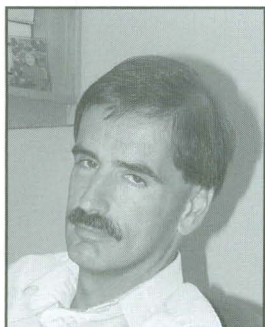
Bob Leichti



Kaichang Li



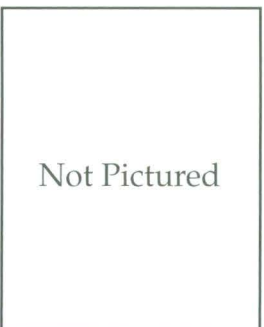
Mike Milota



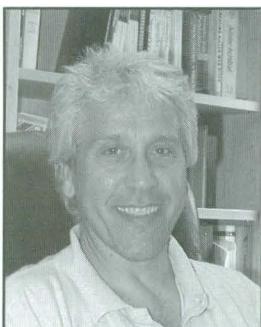
Jeff Morrell



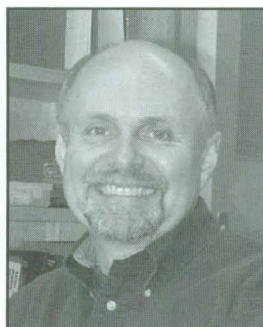
Jim Reeb



David Rosowski



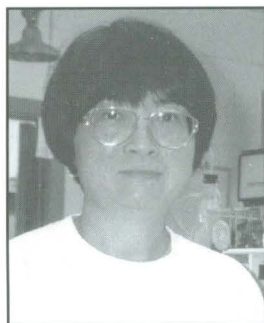
John Simonsen



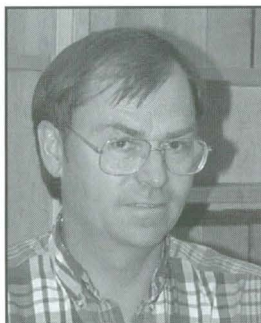
Jim Wilson



## RAs



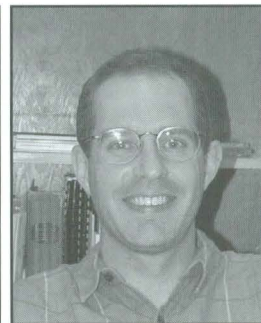
Hua Chen



Milo Clauson



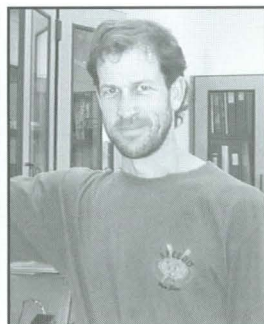
Camile Freitag



Mark Lavery



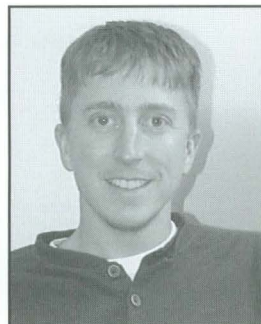
Connie Love



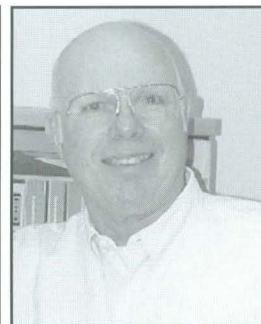
Matthew Nahan



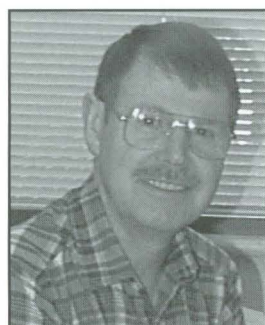
Ron Rhatigan



Ryan Singleton



Dick Holbo



Johann Forrer

## PROFESSIONAL FACULTY



Connie Patterson



Karla Rhoads

## STAFF



Margie Hoover



Deborra Low



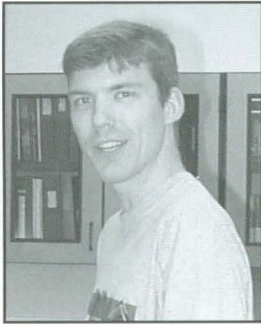
Mary Scroggins



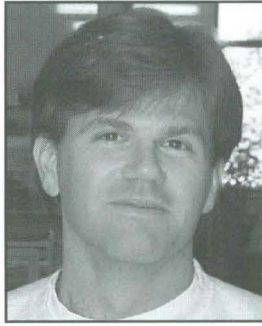
## GRADUATE STUDENTS



Roy Anderson



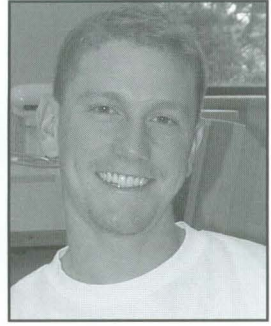
Tyler Congleton



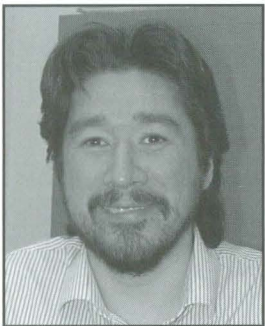
Allen Cooper



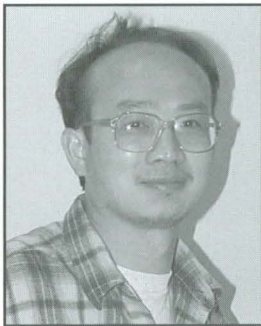
J.C. Domec



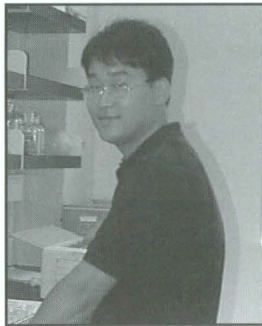
C.J. Ferrari



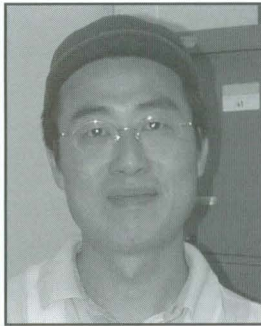
Ramon Ganzalez



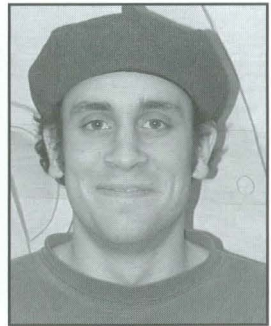
Jiqing Hu



Sung-Mo Kang



Jae-Woo Kim



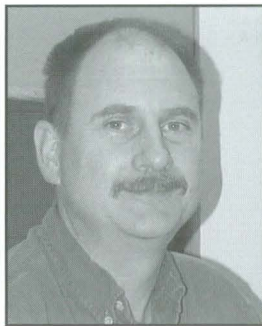
Jeff Langlois



Mark Maknowski



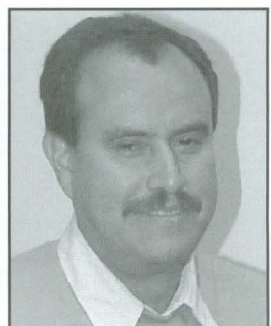
Michele Pruyn



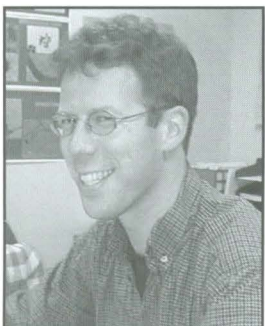
Dan Rowell



Tobias Siller



Antonio Silva



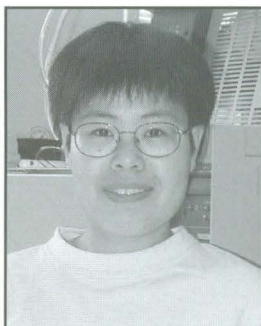
Heiko Thoemen



Alfred Tjahyadi



Ernesto Wagner



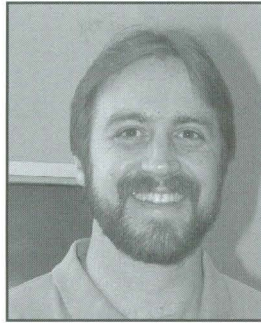
Shelly Xio



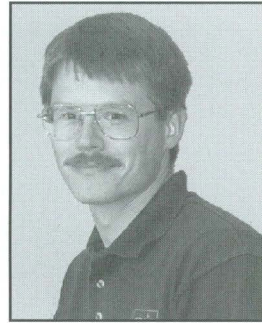
Yeping Xiong



## EXTENSION AGENTS



Scott Leavengood  
Klamath County

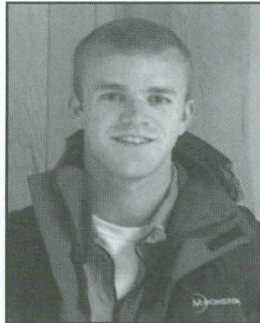


John Punches  
Douglas County

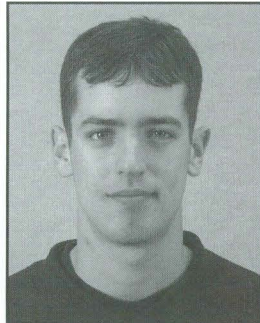
## FOREST PRODUCT STUDENTS



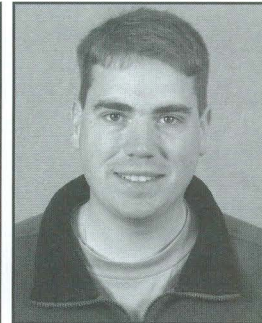
David Dilworth  
Senior



Tim Jaeger  
Junior



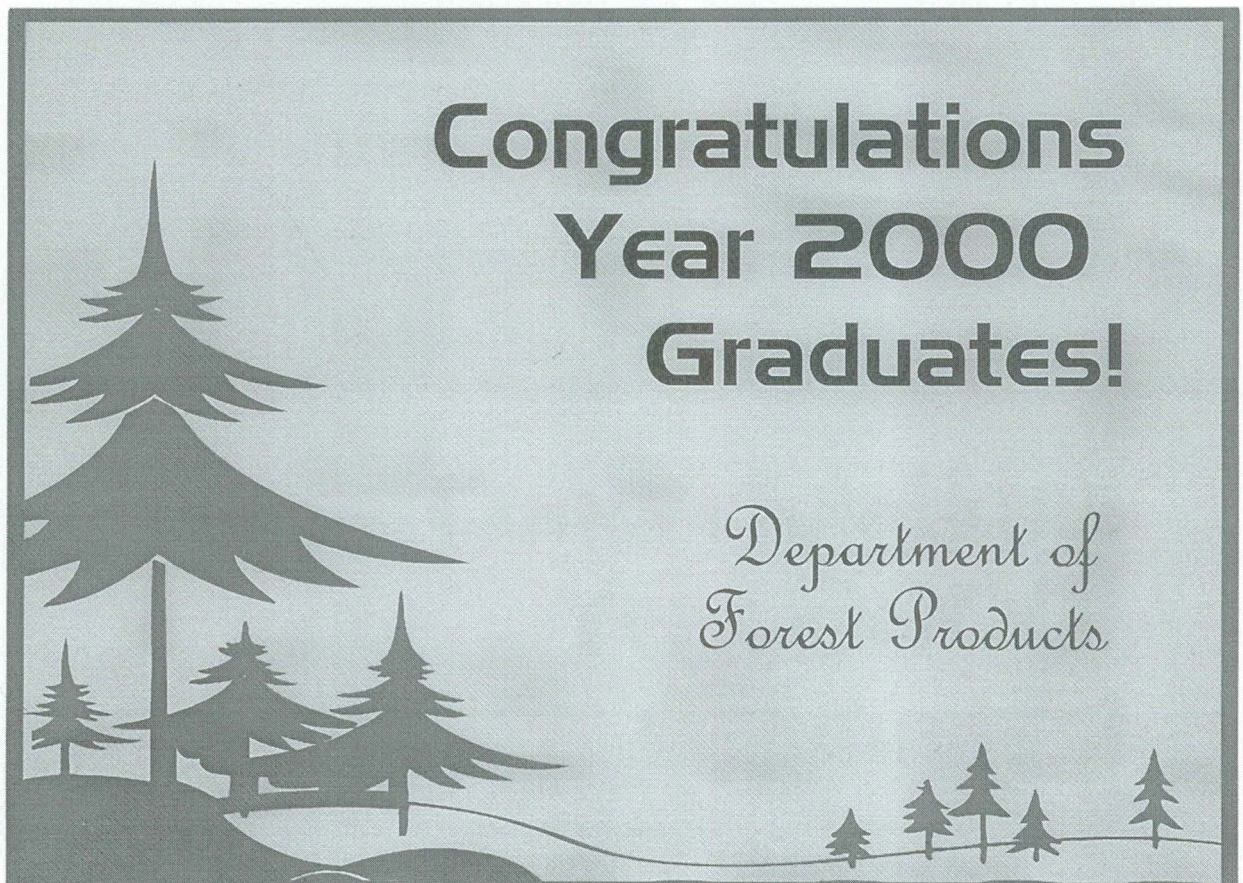
Jon Jensen  
Junior



Brad Mitchell  
Senior



Marc Pratt  
Sophomore





# FOREST RESOURCES



Jack Walstad  
FP Department Head

The Department of Forest Resources is a multidisciplinary department engaged in teaching, research, and outreach. Our departmental philosophy is to provide a rigorous, diversified educational environment that fosters the development of citizens and professionals cognizant of the broad spectrum of forest resources and their stewardship. Emphasis is placed on both academic achievement and practical experience, in the areas of forest management and planning, soils and silviculture, economics and policy, biometrics and modeling, and remote sensing and GIS. Other areas emphasized are photo interpretation and photogrammetry, wilderness and recreation resource management, nature-based tourism, and natural resource education and extension.

## JACK AND HIS WONDERFUL STAFF

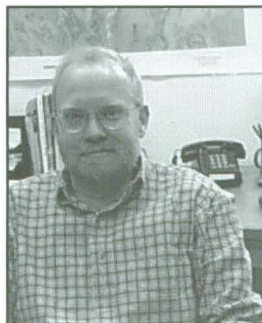
Left to right: Jack Walstad, Kristie Souther, Marty Roberts, Edie Barbour, Sandie Arbogast, Carmen Hall



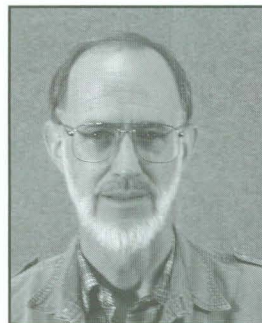
## FACULTY



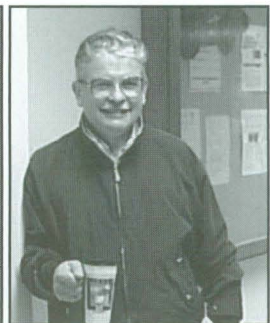
Pete Bettinger



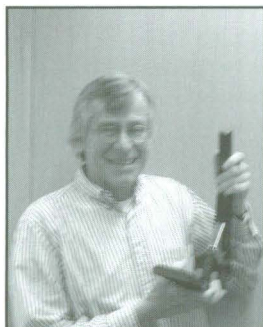
John Bliss



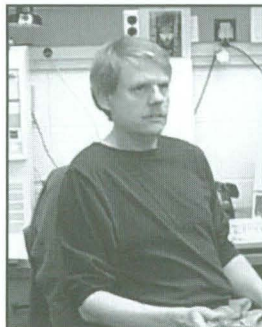
Jim Boyle



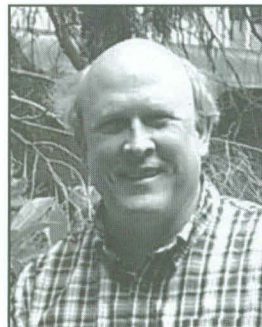
Doug Brodie



Ward Carson



Mark Hanus

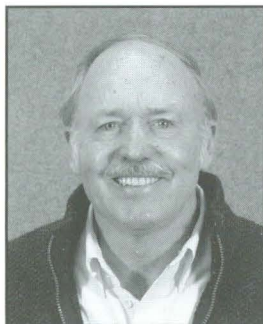


Ed Jensen

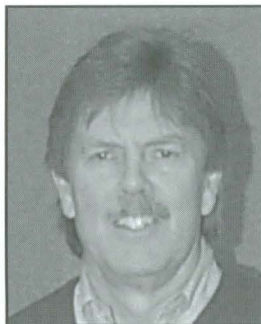


Becky Johnson

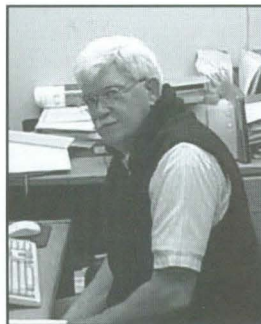




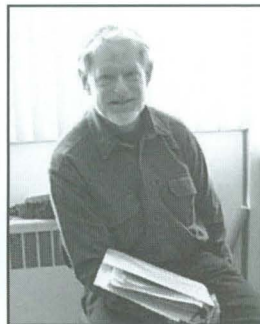
Norm Johnson



Bruce Shindler



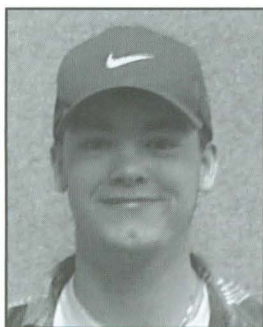
Ed Starkey



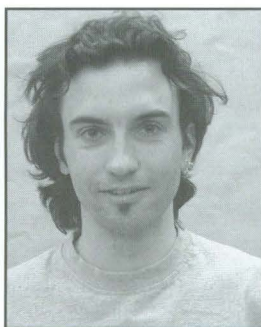
John Tappeiner II

Not Pictured: Darius Adams, Max Bennett, Felipe Bravo, Jonathan Brooks, Tad Buford, Alan Curtis, Ralph Duddles, Jennifer Eagles, Norm Elwood, Bill Ferrell, Steve Fitzgerald, Rick Fletcher, Tom Gallagher, Betsy Glenn, Matt Goslin, David Hann, Kobe Harkins, Dick Hermann, Ansy Herstrom, Geoff Huntington, Royal Jackson, Christina Kakoyannis, Chal Landgren, Greg Latta, Doug Maguire, Claire Montgomery, Alissa Moses, Dave Paine, Bill Ripple, Scott Rumsey, Barbara Schrader, Bo Shelby, Anne Toppinen, Bob Truitt, JoTynon, Andrienne Van Nalts, Angie Wright

## FOREST MANAGEMENT STUDENTS



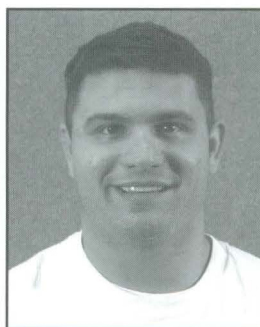
Cullen Bangs  
Senior



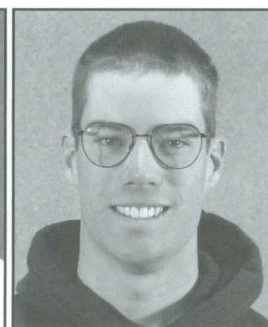
Chris Binggeli  
Senior



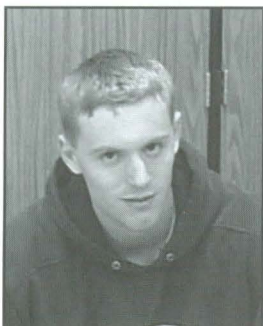
Raymond Calica Jr.  
Sophomore



Ted Downs  
Senior



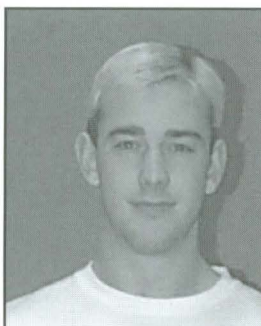
Bill Dunn  
Sophomore



Drew Graham  
Sophomore



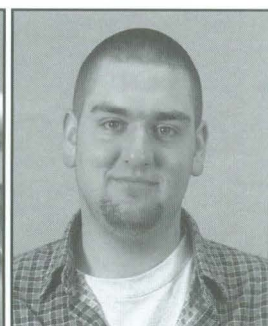
Rei Hayashi  
Post Bac.



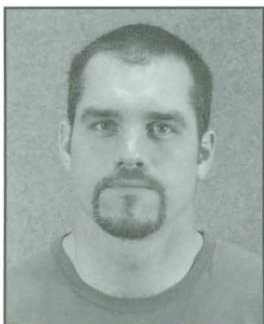
Ian Hayes  
Senior



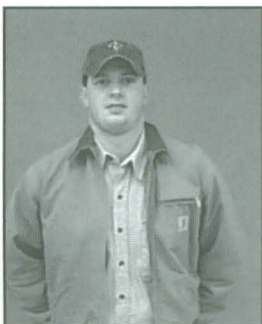
Randy Henry  
Senior



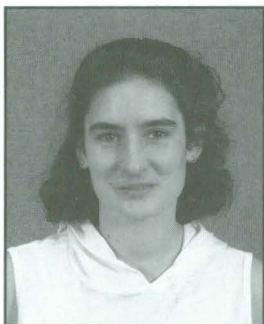
Nate Hunter  
Junior



Kevin Joynt  
Sophomore



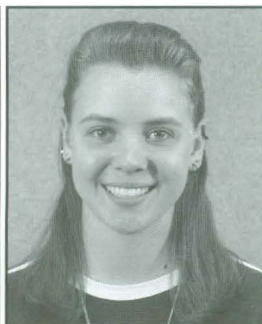
Eric Kranzush  
Junior



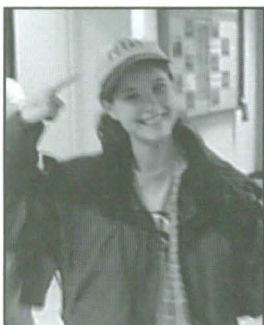
Christine Locke  
Junior



Seth Palmer  
Senior



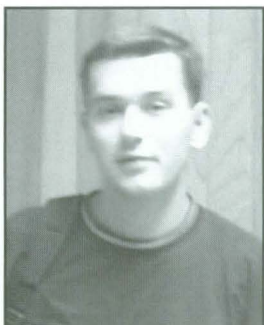
Macrina Savko  
Sophomore



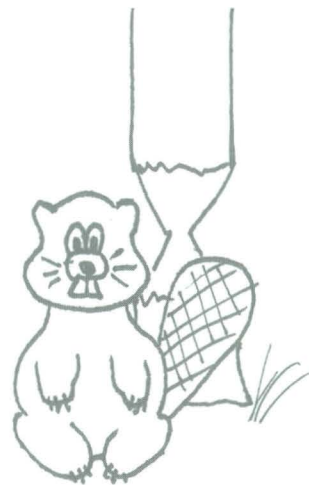
Alisa Spafford  
Senior



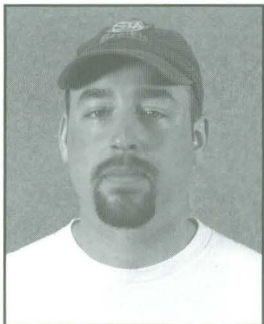
Michael Warren  
Junior



Brian Widmer  
Senior



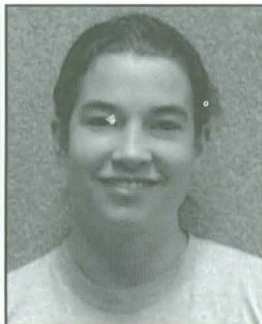
## FOREST RECREATION RESOURCE STUDENTS



Naikia Benjamin  
Senior



Sarah Brady  
Senior



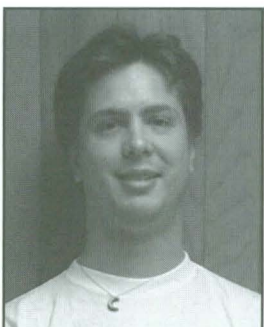
Emily Campbell  
Junior



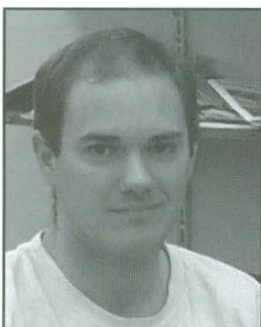
Samantha Carroll  
Senior



Amelia Dexter  
Sophomore



David Figgins  
Senior



Dan Fisher  
Senior



Sarah Hucka  
Senior





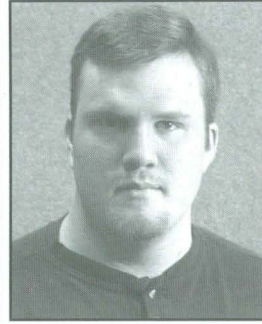
Tyna Ivey  
Senior



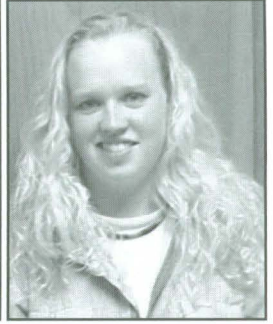
McKenzie James  
Junior



Nadya Leinau  
Senior



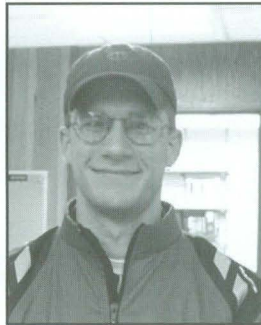
Kenneth Marble  
Freshman



Heather McKinney  
Senior



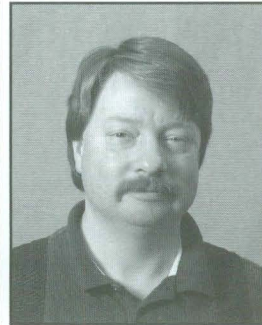
Heather Murphy  
Sophomore



Christopher Murray  
Senior



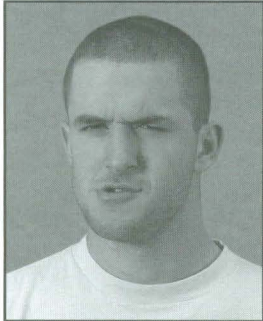
Alison Naymik  
Junior



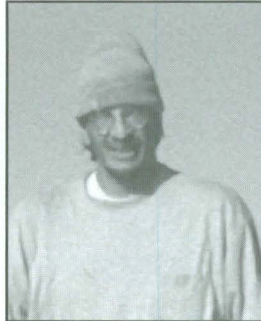
John Newport  
Sophomore



Kathryn Pryor  
Sophomore



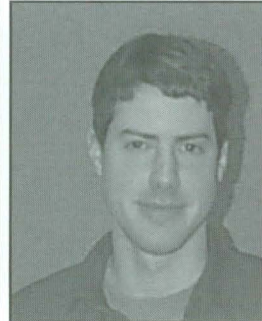
Tate Simpson  
Senior



Steve Stoddard  
Senior



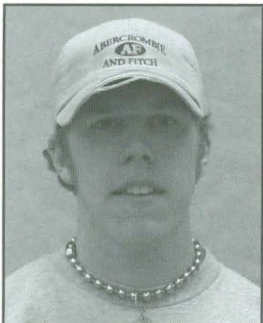
Tye Taber  
Senior



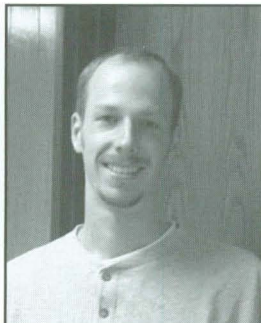
Kelly Turner  
Senior



Kimberly Walker  
Senior



Josh Wells  
Junior



Ryan Whalen  
Senior

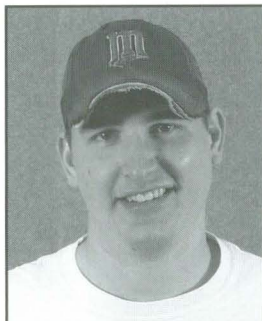


Traca Wiggins  
Senior





## NATURAL RESOURCE STUDENTS



Jay Anderson  
Sophomore



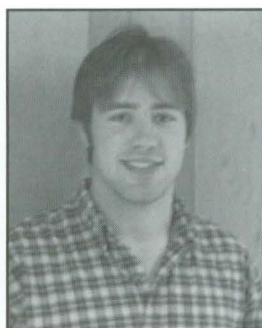
Brandi Bolliger  
Junior



Autumn Bryant  
Senior



Elle Larsen  
Senior



Sam Mc Cown  
Senior



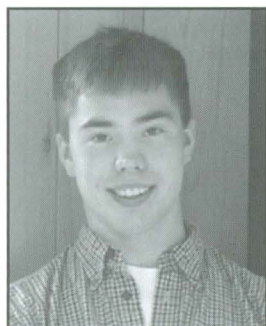
Sarah Pitman  
Senior



Laura Quilliams  
Sophomore



Amanda Sater  
Senior



Nathan Soboleff  
Sophomore



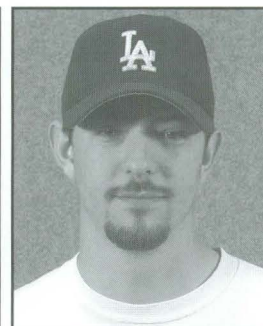
Lauren Sommers  
Sophomore



Megan Van Horne  
Senior

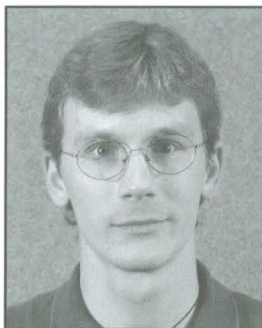


Eric Watrud  
Senior



Travis Woolley  
Junior

## FOREST RESOURCES GRADS

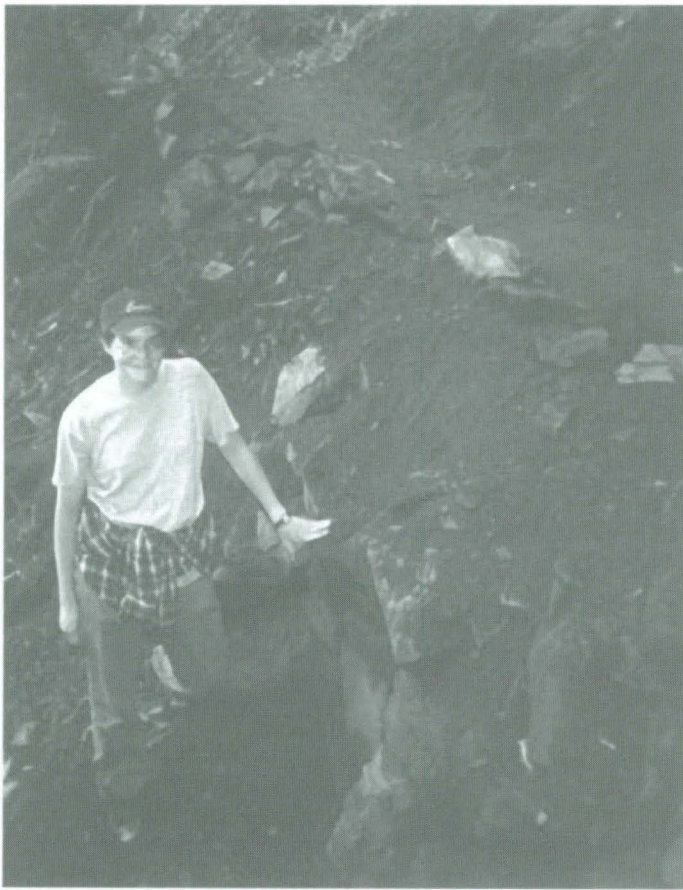


Stefan Bergmann  
Masters



Mark Lichtenstein  
Masters





*Dear Sarah,  
Congratulations on all  
your achievements.  
You have proven you  
can do hard things!  
We love you,  
Dad and Mom*

"For by him all things  
were created: things in  
heaven and on earth... all  
things were created by  
him and for him. He is  
before all things, and in  
him all things hold  
together."

Col.1: 16-17



ALASKA - 1979

**SAMANTHA CARROLL  
CREATES ECO-TOURISM**

**Congratulations Sarah.**



**What a blessing you are!  
Love,  
Daddy, Momma and Matthew**

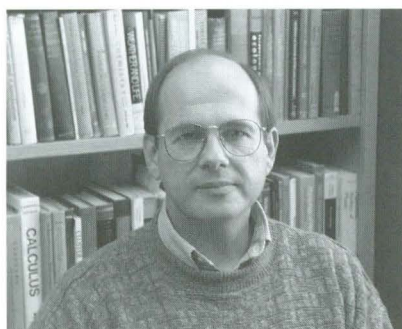


# FOREST SCIENCE



Logan Norris  
Professor and Department  
Head

The Department of Forest Science focuses on forest ecology, tree physiology, genetics and biotechnology, silviculture, integrated forest protection, agroforestry and sustainable forestry. This includes most aspects of the biological sciences that are part of contemporary forestry. In Extension we address issues related to silviculture and forest protection through campus-based Extension specialists, and deliver educational programming in several areas of the state through county-based faculty. Our education program includes about 114 students working to earn the Master of Science, Master of Forestry or Ph.D. degrees, and our research program has annual expenditures of more than \$10 million. A key feature of the department is the degree to which we have collaborative efforts in research with the USDA Forest Service, USGS, Biological Resources Division, and the Environmental Protection Agency. We are enjoying our new home in Richardson Hall!



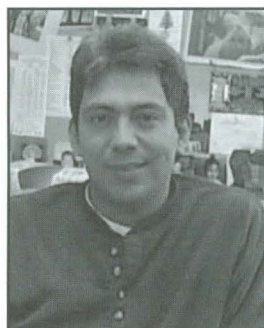
Steve Hobbs  
Assistant Department Head

Right to left:  
Mandie Musk,  
Phyllis Casner,  
Cheryll Alex,  
Sandy Lewis

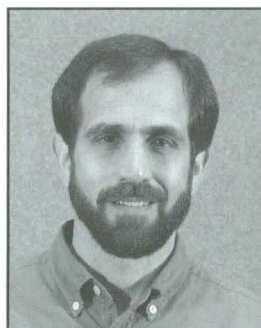
## STAFF



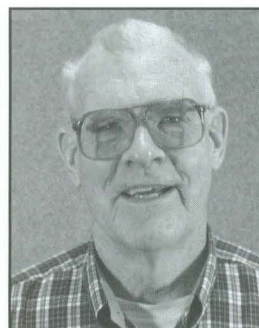
## FACULTY



Efren Cazares



Richard Meilan

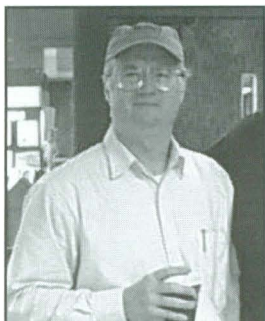


Mike Newton



Susan Peck

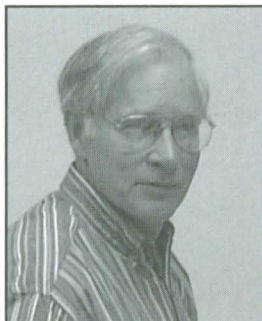




Robin Rose



Jane Smith



Dick Waring

Not Pictured: Steve Acker, Tom Adams, Peter Anthoni, Thimmappa Anekonda, Fred Bierlmaier, Badege Bishaw, Barbara Bond, Alison Bower, Howard Bruner, Amy Brunner, Bruce Caldwell, Jace Carson, Hua Chen, Sharon Clarke, Liz Cole, Mike Collopy, Kermit Cromack, Terry Cryer, James Domingo, Ray Drapek, Pam Druliner, Joyce Eberhart, Bill Emmingham, Becky Fasth, Russell Faux, Bill Ferrell, Maria Fiorella, Gregory Filip, Lisa Ganio, Steve Garman, Claudio Ghersa, Matt Gregory, Bob Griffiths, Diane Haase, Everett Hansen, Eric Hanson, Mark Harmon, John Hayes, Tom Hayes, Dave Hibbs, Vicki Hollenbeck, Tom Horton, Manuela Huso, James Irvine, Cam Jones, Julia Jones, Nuray Kaya, Scott Ketchum, W. Kremers, Olga Krankina, Konstantin Krutovskii, Penny Latham, Denis Lavenender, Bev Law, Sara Lipow, Dan Luoma, Caiping Ma, Kathleen Maas, Doug Maguire, Thomas Maiersperger, Tom Manning, Mike McGrath, Art McKee, Joe Means, Randy Molina, John Moreau, Dave Myrold, Edwardo Nouhra, Doug Oetter, Rob Pabst, David Phillips, Nathan Phillips, Dave Pyke, Steve Radosevich, Darrell Ross, Cynthia Rugger, Sean SanRomani, Andrew Schauer, Tim Schowalter, Jay Sexton, Laura Shelton, Jeffrey Skinner, Phil Sollins, Pearce Smithwick, Gody Spycher, Steve Strauss, Jeff Shatford, John Tappeiner, Ducan Thomas, Jim Trappe, Dave Turner, Mike Unsworth, Kenneth Vance-Borland, Terralyn Vandetta, Steve VanTuyl, Jesus Vargas-Hernandez, Nancy Weber, Jennifer Weikel, Ken West, Brad Withrow-Robinson, Steve Wondzell, Jow Zaerr.



# FORESTRY MEDIA CENTER

The primary mission of the Forestry Media Center (FMC) is to work with faculty, staff and students to improve instruction in the College of Forestry. We keep faculty informed of new instructional techniques and assist them in developing new course materials. We also assist faculty in evaluating their courses, we administer the Self-Learning Center and the Lundeen Communications Lab, and we maintain the College's large pool of audiovisual equipment. The second mission of the FMC is to produce and distribute forestry educational materials to audiences outside the College. Materials include slide-tapes, videos, CD-ROM's and educational websites. Audiences range from other colleges and universities to elementary and secondary schools. The FMC has been a part of the College since 1963. Please visit us, either in person or at our website: <http://osu.orst.edu/Dept/fmc>



Dave Zahler, Judy Sitton,  
Jeff Hino, Mark Reed

Took many rounds, but  
we got ya! Thanks for  
your patience and  
support!

---

## COMPUTER SUPPORT

(Miracle Workers!!! Thanks for your help and support! -- The Cruise Staff)



Kathy Howell  
Computing Resources



Angela Haney     James Wampler

Also a special thanks to **Angela** for her support with the first Annual Logging Sports Bake Sale. Your goodies were well appreciated! -- Loggin' Chickies



# McDONALD-DUNN RESEARCH FOREST



Dave Lysne  
Director



Lawson (Jeff) Starnes  
Assistant Director and  
Operations Team Leader



Debbie Johnson  
Technical Services Team  
Leader and GIS Forester



Ann Rogers  
Cultural Resources Manager



Carol Gaskill  
Accountant



Dave Young  
Engineering Technician



Eric Lamfers  
Regeneration Forester



Janet Ross  
Inventory Forester



Nancy Creel  
Office Coordinator



Rich Symons  
Silviculturist



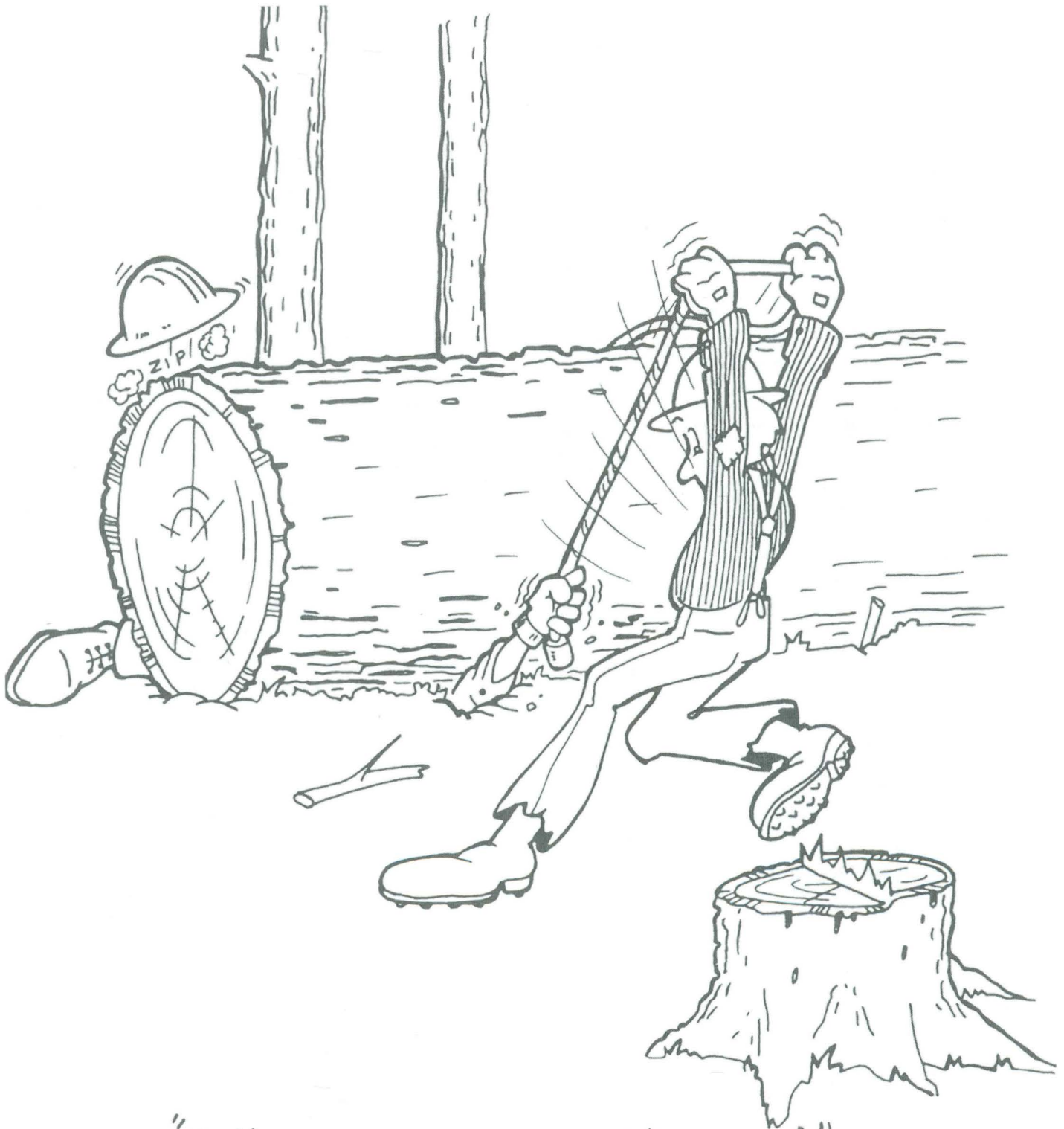
Trisha Trueax  
Recreation Manager and  
Master Woodland Manager  
Program Coordinator

## Koller Crew:

Ben Stringham

James Andrew  
Carson Hundrup  
Laura Wendling  
Chad Wheeler

# CLUBS AND ORGANIZATIONS



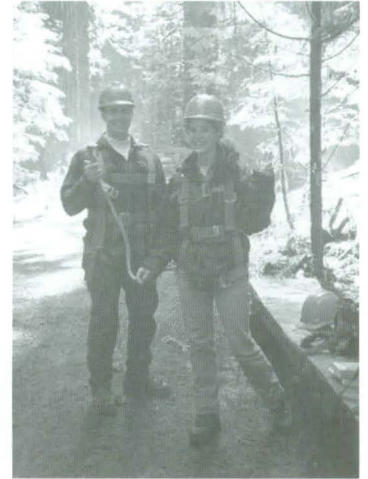
"PULL IT BACK A LIT, . . . TLE!"



# SOCIETY OF AMERICAN FORESTERS

OSU was granted a charter by the Society of American Foresters in the fall of 1980 to form a student chapter. According to the 1990 SAF Constitu-

tion, the membership consists of Members, Fellows, Associate Members, Affiliate Members, Student Members, Corresponding Members, and Honorary Members. Members must be graduates of an SAF-accredited forestry curriculum, or scientists/practitioners in fields closely allied to forestry, who hold a bachelor's or higher degree in their special field and who have three or more years of substantial forestry-related experience.



Student Members must be undergraduate or graduate students in forestry, preforestry, or forest technician programs or in programs closely related to forestry. Both faculty and students are welcome. Officers of the SAF student Chapter are President, Vice-President, Secretary, Treasurer, Christmas Tree Farm Manager, Web Master, Historian, and Education Chairperson. All are elected by secret ballot of the student SAF members.

The goals of the SAF Student Chapter are to promote professionalism in the field of forestry, encourage interaction between professional foresters and students, provide opportunities for taking part in active forest management projects, and help educate the public about forest resources and their management. In addition, the Society seeks to build fellowship among students and provide an opportunity to openly discuss and debate forestry issues.



SAF activities include managing a Christmas tree farm, hosting guest speakers, participation in community natural resource education, and travel to State and National SAF Conventions.



# XI SIGMA PI

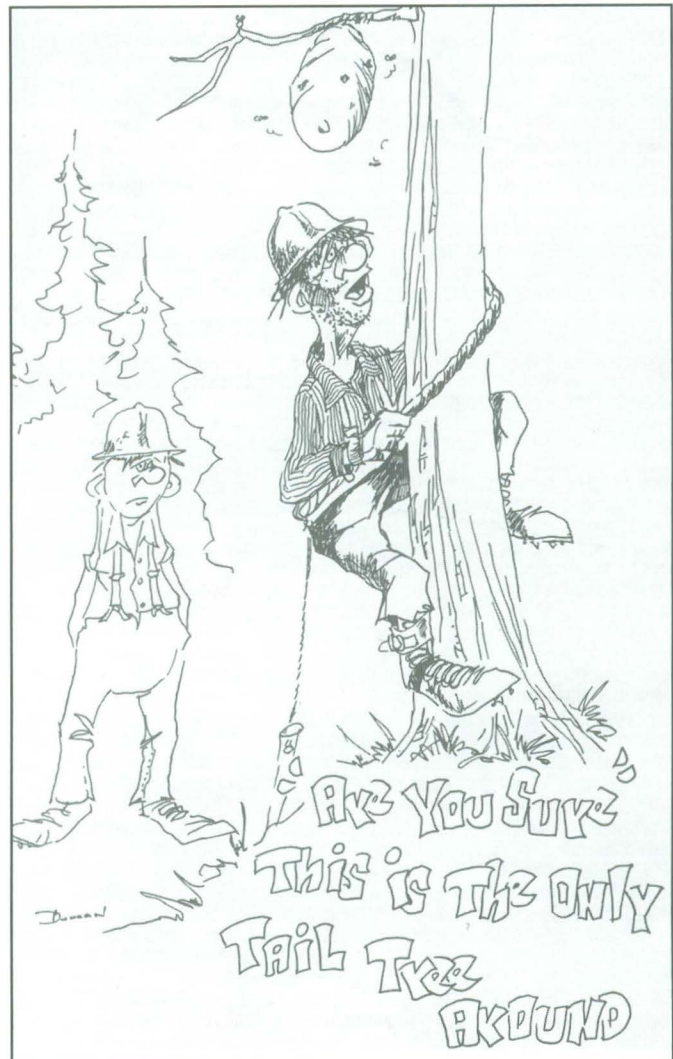


Forestry Ambassadors and some Xi Sigma Pi members were recognized at Fernhopper.

This year was an exciting year for Zeta chapter of Xi Sigma Pi as we reevaluated our goals for 2000. We planned to not only recognize, but PROMOTE, academic achievement by sponsoring study skills workshops, mentor teams, and a tutoring program. Additionally, we worked with professors to assist students in and out of class. Our new goals also include taking an active role in our college and neighboring communities. We teamed up with County Parks Recreation for trail restoration, helped with the Benton County Forestry Expo, and had representatives at Forestry Field Day. This year our annual trip was to the Olympic Peninsula for a weekend of exploring and learning about their forestry practices. We are looking forward to another great year with all our initiates.

## XSP OFFICERS:

Becca Meskimen, Forester  
Christopher Keyes, Assistant Forester  
Jessica Leahy, Ranger  
Andrew Weathers, Fiscal Agent  
Greg Filip, Advisor





# NATURAL RESOURCES CLUB



The Natural Resource Club had a great year with new activities and new members. We had a handful of great speakers at our meetings and stenciled storm drains around town to raise awareness of how we impact our watershed. We volunteered for the second year in a row with The Nature Conservancy on Earth Day at their Cascade Head Preserve. The club hopes to have a lasting impact on the restoration of the coastal grassland.

## OFFICERS:

President: Megan Van Horne  
VP: Greg Wendling  
Secretary: Amanda Sater  
Treasurer: Cliff Uddenberg  
Historian: Becca Meskimen





# FORESTRY CLUB



The Forestry Club is a social club within the College of Forestry. This year's club participated in many activities, including traditional Forestry Club events, sporting activities and community service functions. The year began with Foresters' Ball, held at the Peavy Lodge. With Foresters from Montana, California, Washington, Idaho, and Oregon enjoying dinner and dancing the night away, good times were had by all. Between woodcuts (nearly) every weekend, adopt-a-highway maintenance, the Toys-For-Tots drive and other activities, the annual Sunriver Ski Trip was upon us in no time. Accommodations were in the form of one 'rustic lodge' and one 'luxury home.' A weekend of skiing, sledding, ice-skating, eating and shopping was a welcome way to start Winter term. After beating the books (and of course woodcuts) while the rain beat down on us, Spring term brought the club a host of exciting activities. These included the Logging Conference, the Forestry Expo, the AOFC Forestry Skills Competition, Ag Day, Fernhopper Day and the infamous Choker Dawgs Champion Softball Team. Yes, you name it and this year's Forestry Club was there.

The Forestry Club welcomes all students to come join in our relaxed, fun activities. Just come by one of our meetings or many activities and get involved today!



Among fellow skaters, Pro Ice Skater Cody Lesniak is on the ground again!



Say Cheese!



Bowling style or Dixie Chick look alike ... you decide!!!





Foresters Prepare! One, Two, Three...GO!!!!

### 1999-2000 Forestry Club Officers

**President**

Ted Downs

**Vice-President**

Alex Dunn

**Secretary**

Heather Murphy

**Treasurer**

Michelle Hadley

**Woodcut Chairs**

Andy Conklin

Ed Lewis

**Logging Sports Captain**

Ashley 'Augie' Lung



Above: Lookin' good, Special Ed!



Left: Al and Billy check out the latest equipment at this year's Logging Conference in Eugene

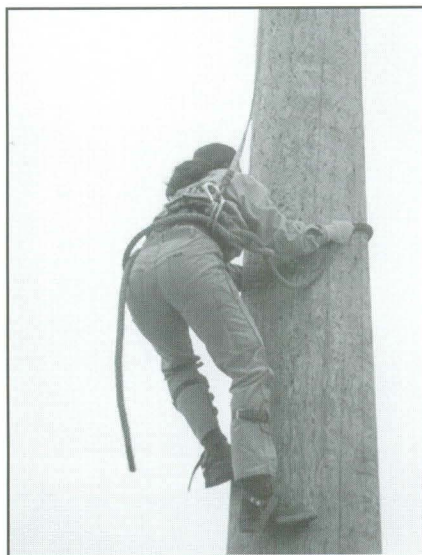
# LOGGING SPORTS TEAM

The Oregon State University Logging sports team is a club sport ran through the Forestry Club. The team belongs to the Association of Western Forestry Clubs, which consists of all forestry-related colleges and universities west of the 100th meridian. We compete in many logging sport competitions throughout the year with two competitions of our own, Fall Frost and Spring Thaw. Spring Thaw is an intersquad competition during spring term, while Fall Frost is during fall term and other teams are invited to compete with us. This year five teams joined us at Cronemiller Lake, where our field is located. The competition went well and we hope to see more teams show up next year. We compete in events such as single and double cross cut sawing, pole climbing, axe throw, log roll (birling), and chopping.

Besides competitions, the logging sports team also puts on demonstrations for elementary schools and others around the community, and we help out with events like Fernhopper Day and Homecoming here at the College of Forestry. We also help host the Association of Oregon Forestry Clubs State High School Championships. They do many events over two days. They compete in some events we don't, such as fire hose lay and cable splicing, but there are many events we do that they cannot compete in. After their competition we were able to give them a demonstration of our events and even let some of them try out the water events.



Above: "One tough bunch." competitors gather after competition in Spokane, WA.



Above: Michelle Hadley climbing in Idaho.

Right: OSU participants in Conclave 2000 at Humboldt State University.

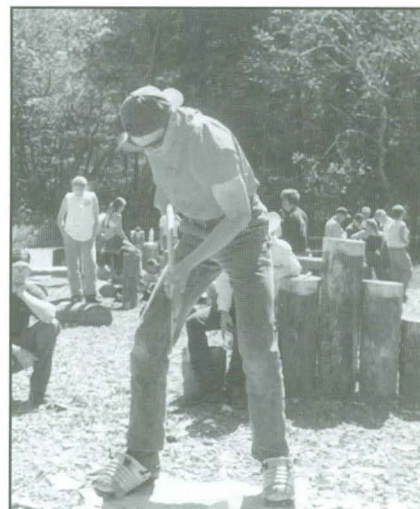


Logging sports

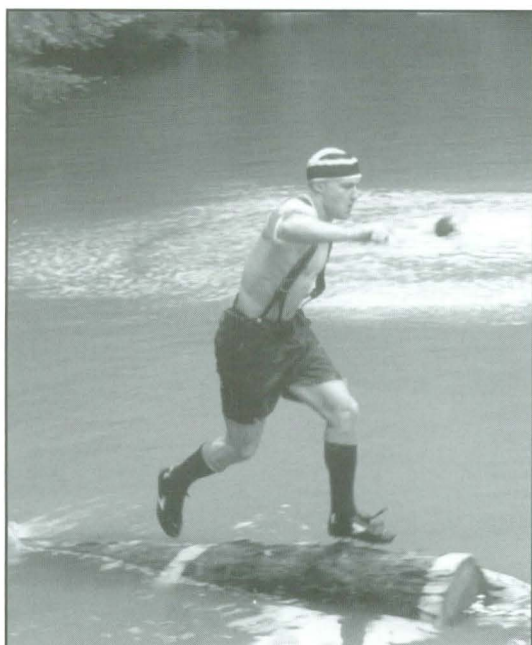


We didn't have a huge turnout of competitors this year, but some of us managed to make it to all of the competitions. We had a lot of fun this year, and some of the guys and gals even brought home some first-place trophies. We are recruiting hard now though, and hope to have more numbers for next year. We will also have some of the graduates around next year to help coach us, so our young team should see some great improvements in the next few years to come.

Right: Captain Augie Lung setting up for his next hit in Horizontal Hard Hit chopping.



Below: On his way with water wings and jailers cap, Senior Carson Hundrup runs down the boom run. Crazy dress is essential in water events.



Above: Nate Hunter sawing during Fall Frost with our advisor Jim Kiser looking on.

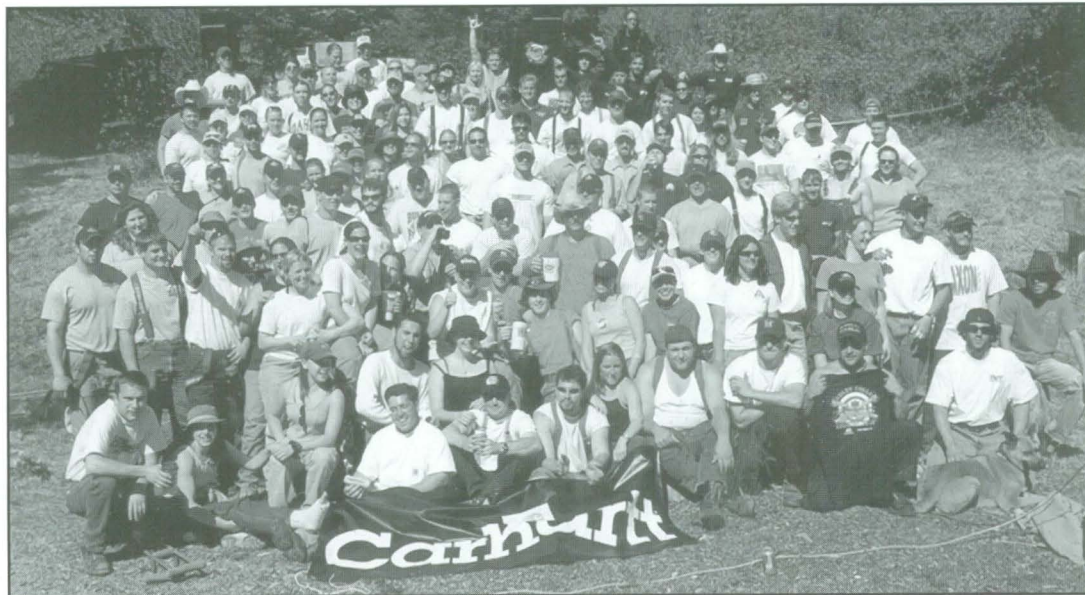
Left: Brandi Bolliger hoping for a bullseye in the axe throw at California.





# CONCLAVE 2000

Conclave is the Championship Logging Sports competition for the Association of Western Forestry Clubs. This year's conclave was held in Arcata CA, and hosted by Humboldt State University. There were eight of us who traveled down for competition this year. We went down for a whole week. Three days of it were competition, and the other three days were filled with educational tours. Among the tours were a tour of a redwood mill and a tour of the giant redwoods. We also made it to the beach one evening. The week was full of fun. Among the eight of us who went, we brought home a few first-place trophies, and many other awards. We even brought home a special first-prize team award for some extra-curricular activities we partook in. There were 12 teams there this year and around 160 competitors. Many of the competitors were new this year, meaning there should be a lot of improvements in the years to come with all these teams.



Top: 150 competitors at Conclave 2000, The Millenium Edititon.

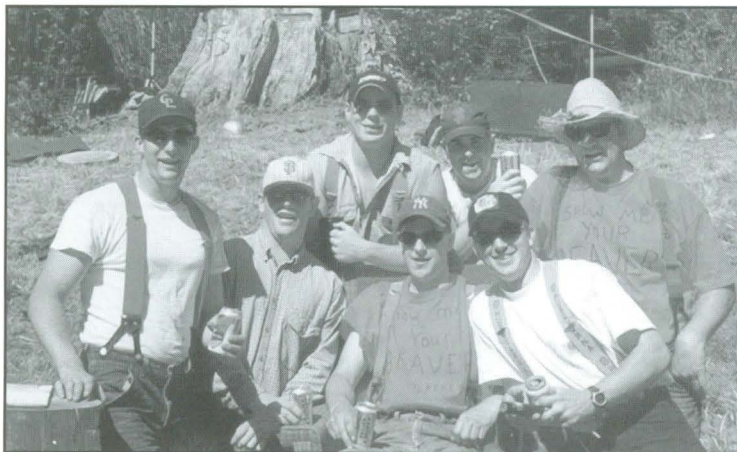
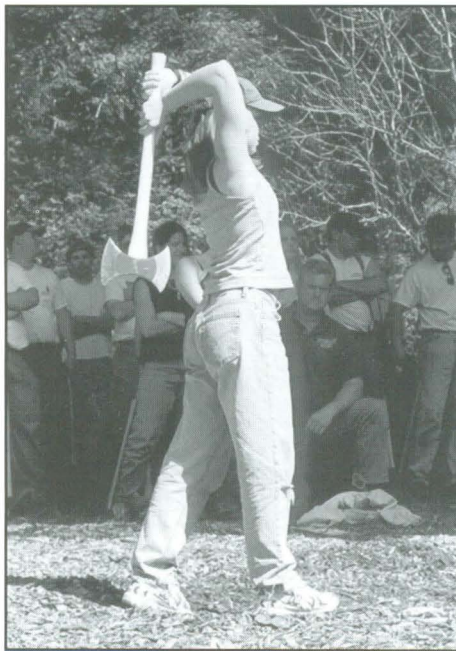
Left: Left to right is Nate Hunter, Carson Hundrup, and Augie Lung showing off their Beaver Spirit.



Right: Paul Bunyon and Babe the Blue Ox - Logging All Stars at the "Trees of Mystery" en route to Arcata, CA., for Conclave.



Below: Mac Savko in the axe throw finals. Good job on 2nd place.



Above: "Mini Me" (Carson Hundrup) and "The Splasher" birling. It was a cold day for water events.

Left: A motley crew of loggers enjoying themselves at the competition. Some from OSU, Humboldt State, and Cal Poly.



# RECREATION CLUB

Activities this year included Crater Lake NP, high way clean up, Fernhopper Day, Sun River ski trip, and sledding on the pass.

President: Naikia Benjamin  
Vice president: Monica Musler  
Secretary: Kirk Young  
Treasurer: Ali Pinowar



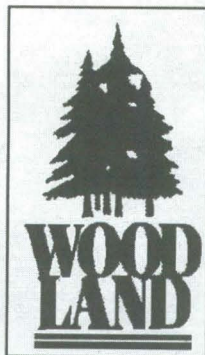


TO SEE A LIFETIME  
OF SUSTAINABLE  
FORESTRY,

YOU DON'T  
NEED TO WAIT  
A LIFETIME.

**M**anaging renewable forests isn't just our future—it's also our past and present. For decades Stimson has practiced a balanced land ethic, harvesting timber to produce forest products responsibly while protecting fish and wildlife, soils and streams. Respecting our greatest resource so that, many lifetimes from now, all the things we enjoy from the forest—and in the forest—will still be there.

For information about employment opportunities, contact us at:  
Stimson Lumber Company  
P.O. Box 68  
Forest Grove, Oregon 97116  
or visit our website:  
stimsonlumber.com



Mark Smith  
Dan Green      Jim Wick

5285 SW Meadows Road, Suite 468  
Lake Oswego, OR 97035

(503) 684-4004 (Office)  
(503) 684-4005 (FAX)  
woodland@teleport.com

## Bettinger & Bettinger

P.O. Box 902, Corvallis, OR 97339  
(541) 752-8831

*Kelly A. Bettinger*  
Wildlife Biologist

*Pete Bettinger*  
Forester

*Avian Field Surveys  
and Assessments*

*Forest Management,  
Economics, and Planning*

## NURTURING TREES. CREATING HOMES.

**Congratulations  
2000 Graduates**



### A Family-Owned Business

- Putting Employees First
- Delivering Product Excellence
- Practicing Sustainable Forestry
- Participating in Our Community

## Swanson- Superior

FACILITIES IN NOTI AND JUNCTION CITY  
FORESTLANDS IN WEST LANE COUNTY



# RICHARDSON HALL

Richardson Hall, the sparkling new facility of the College of Forestry and the Forest Research Laboratory (FRL), was occupied by our Departments of Forest Products and Forest Science in late May of 1999. We were only about three weeks off-schedule because of the hard work and the wonderful "partnership" spirit created among the members of the Richardson Hall Project Team, starting way back in 1995 with the initial planning for the building. That Team included our Architects - SRG Partnership, our Contractor ñ Lease Crutcher Lewis (and all their subcontractors), - the OSU Facilities Services staff, and our College/FRL planning group.

Richardson Hall brings the entire College faculty and staff together for the first time. For decades, we were dispersed all over campus; first between Moreland Hall and the old FRL Building at 30th and Western, then beginning in 1972 between the latter building and the new Peavy Hall, and finally in both of those plus leased space in the Forest Service ís Forestry Sciences Laboratory to our west. It also provides our faculty, graduate students, and staff with the state-of-the-art laboratory and support facilities we've long-needed to maintain our fine international reputation in research and graduate education.

From all reports over the past 11 months, Richardson Hall is living up to our hopes and expectations as a fine place in which to learn and work. Intended primarily as a research facility, Richardson Hall contains some features unique to this campus, the state of Oregon, and the region. One of these is the Knudson Wood Engineering Laboratory located on the far south end of the laboratory wing's first floor (RH 147). This lab and the special equipment it supports, will allow our Forest Products scientists to conduct experiments testing not only materials strength and durability of connections and fasteners, but the integrity of the entire design and fabrication, as well. Forest Science researchers will have access to a specialized facility for containing and testing genetically transformed plants, including labs and a greenhouse for challenging their resistance to various pests (RH 389).

We were also able to include some special educational facilities in Richardson Hall including the 21st Century-equipped Starker Forests Extended Education Classroom (RH 107) as well as a number of fine conference rooms and computer labs. And because we moved significant numbers of faculty and graduate students from Peavy to Richardson we were able to convert that space to include several new classrooms and conference rooms in Peavy Hall. The move also allowed us to improve and to consolidate our Computer Support Services facilities, including the undergraduate computer laboratories in Peavy Hall.

Last but not least, we gained some "public space" on all three floors of Richardson Hall. This space is located at the so-called "knuckle" areas where Richardson and Peavy Halls come together. The centerpiece is the Lounge and Lunchroom on the second floor (RH 223), which is open to all students, staff, and faculty. Additional tables, benches, and chairs for study, meeting, or just plain relaxation are located on the first and third floors. You'll also find some interesting architectural treatments and the beginnings of an actual art gallery at various locations in Richardson Hall. So, come see Richardson Hall and take advantage of its public spaces ñ you're always welcome!

Bart A. Thielges





Faculty, students and alumni  
engage in conversation, preparing  
themselves for the day to follow.



Alumni gather at  
Richardson Hall to start the  
Fernhopper Festivities



# FERNHOPPER DAY



Alumni gather to watch axe throw at the George W. Brown Logging Sports Arena



"Hardcore Logger" Alumni again shows the young'uns how to single buck



George and Wilbur try their hand at axe throw



Alumni and students lead us with the traditional Fernhopper sing a long.



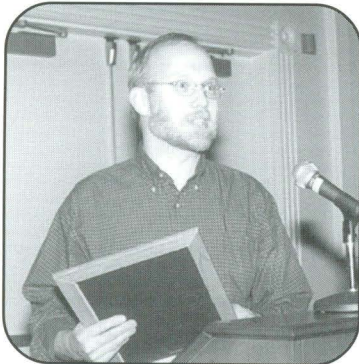
# AWARDS



George Brown is honored with an endowed scholarship in his name. Presenter was Dan Green.



Steve Tesch is presented with the "French" award by Marv Pyles for his support in dealing with a volatile situation.



John Bliss is awarded with the Julie Kliewer Mentoring Award for his excellence in mentoring.



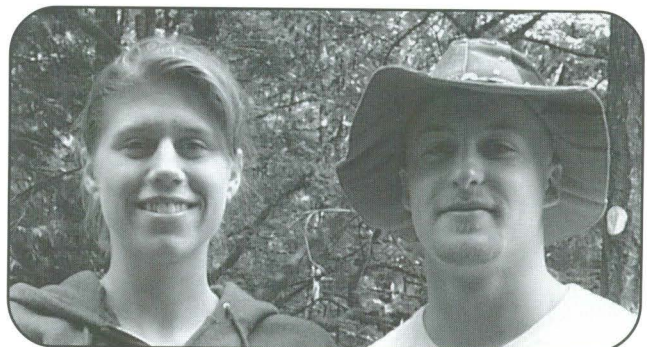
Barb Schrodder is awarded the Julie Kliewer Mentoring Award for her excellence in mentoring



Carson Hundrup is awarded this years Kelly Axe award for this long hours of hard work and encouragement.



Jim Kiser is awarded the Aufderheide Award for his teaching and outstanding student support.



Spring Thaw 2000, "Belle and Bull of the Woods."  
Brandi Bolliger and Carson Hundrup

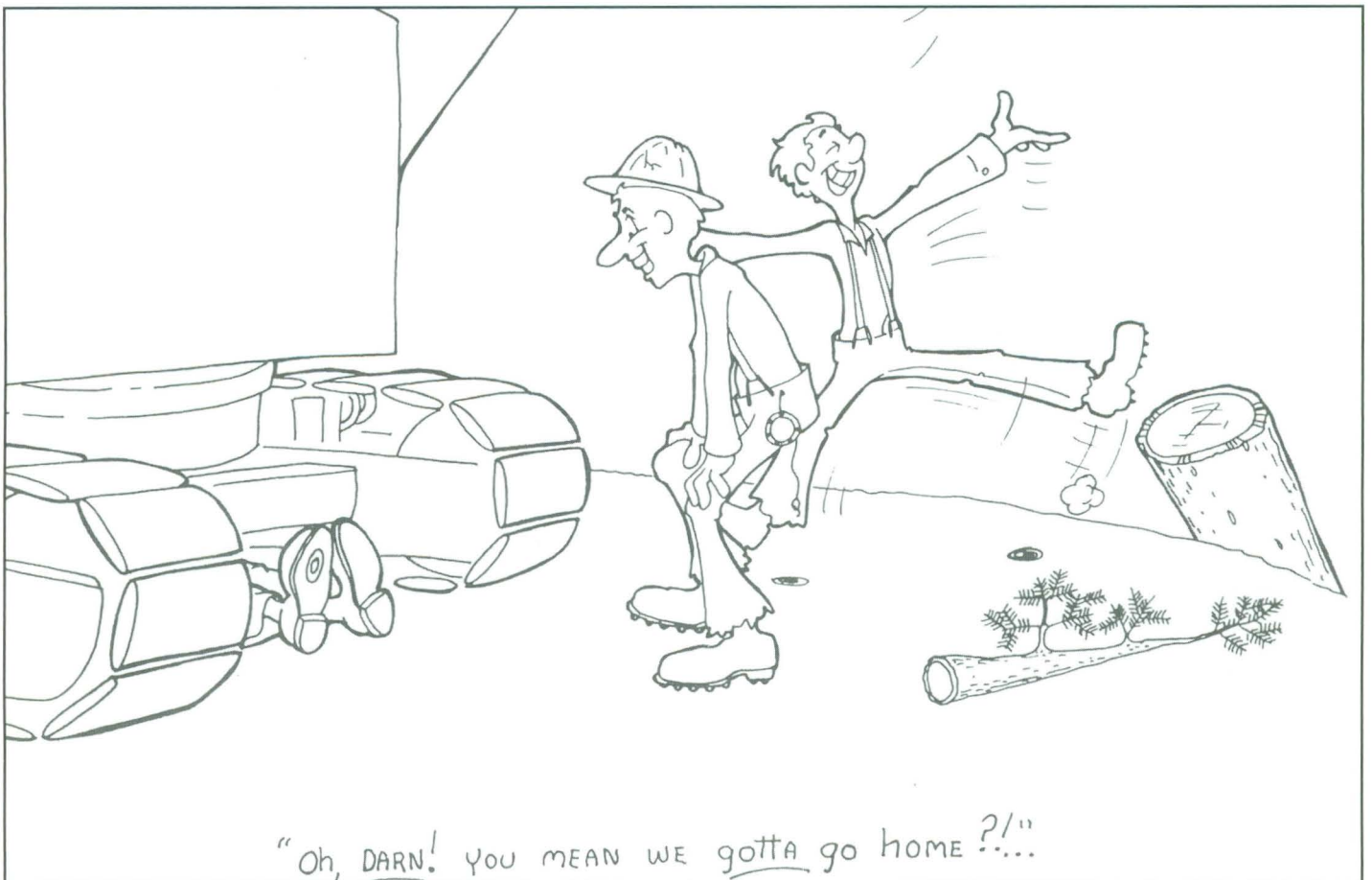
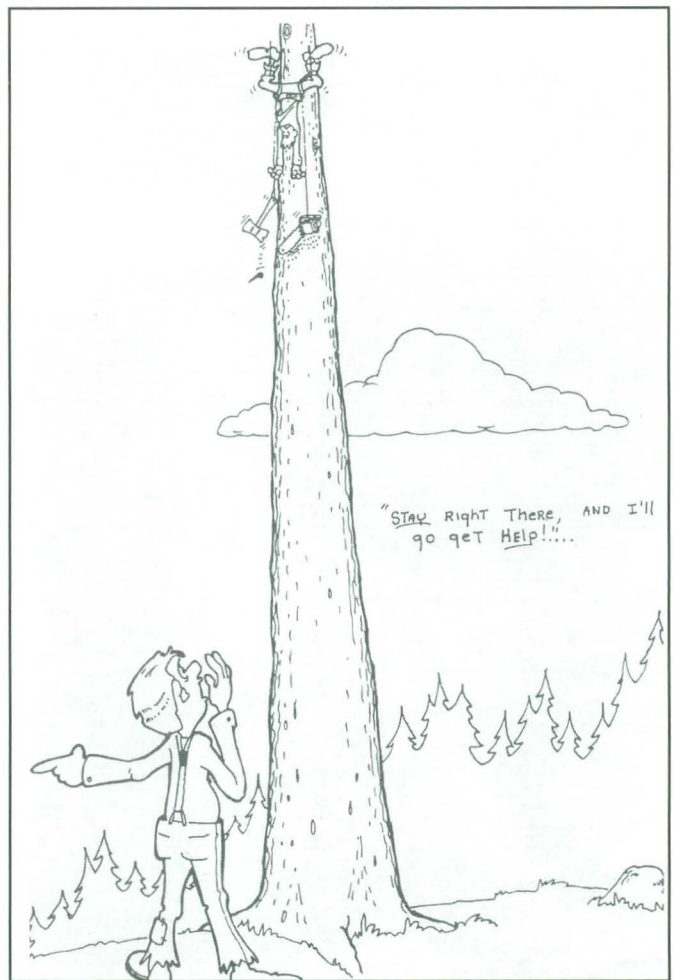
**CONGRATULATIONS**

**TIFFANY LEE VAN HUYSEN**

**WE ARE SO PROUD OF YOU  
AND YOUR MANY  
ACHIEVEMENTS!!**

**ALL OUR LOVE AND  
WISHES FOR FUTURE  
SUCCESSES!!**

**MOM and LARA**







Special Cuttings on  
High Grade Douglas Fir  
Lumber to 24" X 24"-26'

DOMESTIC & EXPORT

**(541) 942-5541**

2795 Mosby Creek Road  
P.O. Box 547  
Cottage Grove, OR 97424

JELD-WEN, Inc.  
**INTERNSHIPS**  
A Hands-On Opportunity  
To Shape Your Future

OPEN THE DOOR TO A REWARDING  
CAREER WITH JELD-WEN, INC. WE  
BUILD MORE THAN DOORS, WINDOWS  
AND SPECIALTY WOOD PRODUCTS.

**SHAPING  
FUTURES**

WE ALSO BUILD CAREERS FOR  
PEOPLE, OPENING DOORS TO  
UNLIMITED OPPORTUNITIES  
AT JELD-WEN MANUFACTURING  
AND DISTRIBUTION COMPANIES  
AROUND NORTH AMERICA.

Visit our web site at [WWW.JWINTERNS.COM](http://WWW.JWINTERNS.COM)  
or call toll-free: 1-877-535-3936

**FOREST ENGINEERING  
INCORPORATED**

*Engineering solutions that are:*

- ..physically possible*
- ..environmentally friendly*
- ..economically viable*

Ed Aulerich FE-60  
Steve Aulerich FE-82

[www.forestengineer.com](http://www.forestengineer.com)

620 SW 4th Street  
Corvallis, OR 97333  
Tel: 541-754-7558  
Fax: 541-754-7559  
E-mail: [office@forestengineer.com](mailto:office@forestengineer.com)





# ASSOCIATED OREGON LOGGERS

**"Ensuring Healthy Forests  
for Future Generations...  
Because Managed Forests  
are Healthy Forests."**







THE  
ENDANGERED  
SPECIES