

# **ANNUAL CRUISE 1971**















# New Forestry Building



## Words From the Editor

Fellow Foresters,

I hope that the 1971 Annual Cruise will be beneficial to students and alumni alike to remember back over this past year. In fifteen or twenty years perhaps we will be able to look at our old annuals and remember a few of our experiences we had as Foresters here at Oregon State.

The staff for the 1971 Annual Cruise consisted of:

Advertising & Business Managers: Mike Hicks and Pat McGillivray

Copy Editor: Dennis Callaghan

Layout: Lou McCarthy, Jeff Smith, Bruce Palmer, John Hatton and Dennis Callaghan.

Photography: John Hatton

Each of these men have given many hours of time over the last three terms to work on the Annual Cruise.

Dave Stall of Your Town Press, the publisher of the Annual Cruise, should also be thanked for his patience and help.

Much credit must also be given to Al Wilson, who was this year's original cruise editor, and did much to form the organization that has put forth the effort to complete the 1971 Annual Cruise.







# Dedication to Chuck Lewis

The building block of any educational institution of higher, or lower, learning is the individual teacher. This year the Annual Cruise staff would like to dedicate the 1971 Annual Cruise to Chuck Lewis, who they feel has made more than an outstanding contribution to the School, its students and the University.

Until approximately five years ago Chuck had never taught a college class of any kind, and yet in those few years his inherent ability to communicate with students and his concern for them has allowed him to do one of the more outstanding teaching jobs in the School.

We might ask the question, "Just exactly what is it that makes Chuck such an outstanding teacher?" Basically we don't feel that it is any one thing but a combination of things.

For instance, his concern for the student. We all remember the first time we ever had Chuck for a class. The first thing he would do is say, "If any of you ever have any trouble, of any kind, at any time of day or night, don't hesitate to come and see me. I don't care if you need bail to get out of jail or if you're having trouble with your girl. Call me and we'll talk about it." This kind of concern helps put the student and the professor on the same level, helps to bridge the gap between the student and the professor, and makes the student feel that he has found a new friend and truly belongs in the School of Forestry.

Chuck mixes theory and philosophy with practicality and presents his material so that the student feels that it *is* important and will surely be valuable to him after graduation. In other words, he's able to bring the outside in.

Chuck doesn't like to lecture, but instead likes to get the students themselves to reason out the answers to problems. You might say that in a way Chuck teaches "thinking." This is a very rare quality in a teacher. Many teachers profess that this is what they do, or try to do, but very few of them can actually do it.

Versatility is certainly a plus on any teacher's list of credentials. Chuck's 25 years of experience in the industry gives him the broad range of knowledge needed to teach, and teach well, many different courses. He's taught mensuration, forest protection, industrial forestry and certainly has the potential to teach others.

He's a big enough man that if he realizes that he doesn't know enough to adequately present certain lecture material he will admit it and bring an expert into the class to talk to the students.

Chuck has also shown his interest in the students and the School by being one of the most consistently active professors in School and Forestry Club activities.

We just want to say thanks Chuck. Thanks for caring, thanks for being the *friend*, the *man* and the *teacher* that you are.





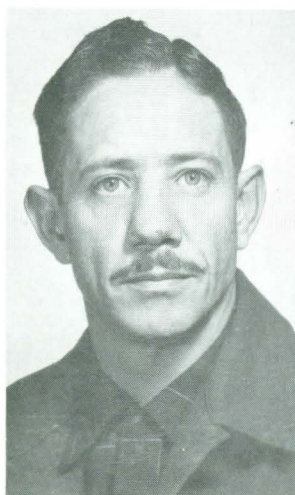
The following is a self bibliography that was submitted by Chuck Lewis to the Annual Cruise on request.

I have been an industrial forester for over 30 years, give or take a few for those World War II years.

I have worked in both the public and private sectors of the industry with the strongest emphasis and contribution leaning toward the private sector.

As an undergraduate I worked for the U.S.F.S. in forest pathology research in the Central States Experiment Station and on the Deschutes National Forest as a "smokechaser." In the field of forest survey and inventory I worked with the B.L.M. in Eugene. In private enterprise I spent a summer on an engineering crew on railroad surveys at Oregon American Lumber Corporation at Vernonia, Oregon.

During World War II I was a Marine Corp. pilot flying single engined "Cosairs" in the Pacific Theater based at Midway Island, which at that period was the most western submarine base in the Pacific.







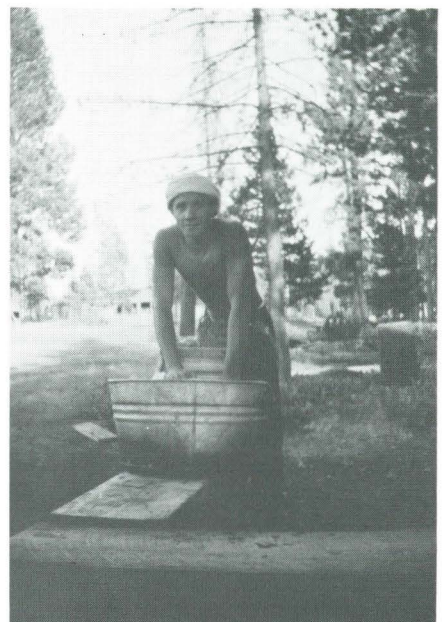
My work as an industrial forester has extended from that of a law enforcement officer for the Oregon State Board of Forestry to one of a resident manager of a subsidiary division of Dant & Russell where I was in charge of all production, personnel, payroll, etc. I have been a Timber Manager for Roseburg Lumber Co., Forest Consultant for myself and as a member of Mason, Bruce and Girard of Portland, Oregon, and a forester for other companies.

Currently I am finishing up both my teaching and educational program here at OSU School of Forestry and will receive my Masters of Science degree in F.M. in June, 1971.

After June of this year I will be involved in Marketing, Transportation, and Pricing of Forest Product Residues for Western Wood Fibre, Inc., Eugene, Oregon.

I am sure that as much as I have enjoyed teaching it would be foolish to say that I will not miss it.

C. Lewis









# The Dean's Message

Criticism is fine. Without it the instructor couldn't overcome his weaknesses, nor the student discover what he doesn't know. Constructive criticism is essential to learning and improvement of any kind. But sometimes I think we're too *consistently* critical! We so look for shortcomings that we may overlook the —comings that aren't short—!

Accordingly, I'd like to step out of character and use my allotted space this year not to suggest improvements but to salute some people of whom I'm sincerely proud—the long-comings of our School—you students. From freshmen to graduating seniors, you young foresters are a great group!

I'm proud of your determination to get a sound education. You take one of the most demanding curricula on campus. It requires six months' on-the-job experience and in addition six per cent more credits than any other four-year program except engineering. You take courses in seven of the University's ten schools, providing a rare breadth of contact with other students and faculty—and almost assuring you of finding subjects in which you'll have trouble! Yet when you complain your complaints usually are about courses which aren't sufficiently relevant, rigorous and sophisticated! You respect competence—and (usually) you seek it!

I'm proud of your efforts to improve our School's education program. (Even when your solutions and mine aren't in perfect harmony!) Last year you helped us develop a mechanism for constructively criticizing and evaluating the effectiveness of your forestry courses—and professors. And since then you have responsibly provided evaluations which are indeed improving these courses—and professors! This system is now being studied throughout the University and has been modified and adopted by at least one other forestry school.

I'm proud of your initiative. Your three-hour field course on "forestry and the environment" was one of the most popular of Earth Day 1970. And educationally it was easily the most successful. Attended by 300 students, faculty, and Willamette Valley residents, and conducted in Mac Forest during a weekend of snow, rain and sleet, the standard you and the graduate students set in 1970 will be an exceedingly "tough act to follow!"

I'm proud of your independence. Despite the demands of your curricula and the small size of your school, you have many extra-curricular activities and you run them yourselves! Your Annual Cruise is the only school yearbook and your Hi-Lead the only school newspaper on campus; your Fernhopper Day is the only alumni event sponsored by students of one school. Forestry Club and Xi Sigma Pi compare favorably with the University's most active school clubs and honoraries. Your almost completely student-run forestry program for Beaver Open House was superior to that of most schools in which there was heavy professional input. You do it yourself—and you usually do it very well.

I'm proud of your accomplishments. One of our 1970 seniors had an article published in the *Journal of Forestry*. For the second year in a row an OSU student was selected in regional competition as the top student for a fine industrial scholarship. You know how to work. Your summer employers' typical comments are: He's a good worker. He learns quickly. We want him back next year. Hope we will have a place for him when he graduates. His hard work set a standard for the entire crew.

I'm proud of your appreciation of the finer things in life—you elected Beth Chaffey to a Forestry Club office—the first young lady in the School's history to be so honored!

I'm proud of your self-respect and of your supportiveness. In the day of "doing your own thing," the current tendency of many is to dodge responsibility and to deny mutual interdependencies. Instead, *you* support and operate a successful honor system in the School of Forestry—the only one on campus. And you also support each other. Recently a professor from another school said classes with foresters were his favorite because "They work so well together, help each other, and are concerned for the progress of the whole class." That's the stuff from which strong individuals and a strong society are built!

Aren't there improvements I'd like to see? Sure! And we *can* improve. But I want you also to know that I'm sincerely proud to be associated with you. And I hope you share that pride in yourselves and your forester associates.

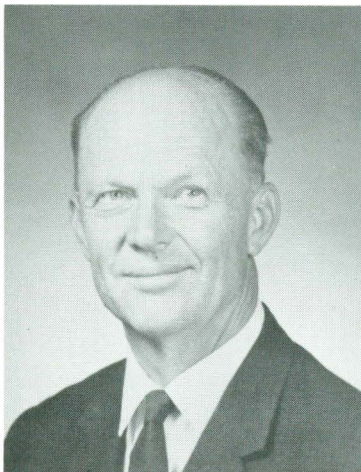
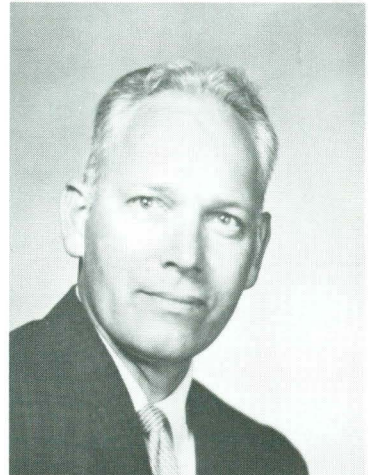
Carl



# Dean's Assistants

## RUDY KALLANDER

Rudy enjoys hunting, fishing, and gardening and has a particular interest in OSU forestry building plans. He received both his B.S. (1940) and his M.F. (1953) from OSU.



## DALE R. BEVER

Dale received both his B.S. and M.F. from OSU in 1942 and 1954 respectively. His hobbies are stamp and coin collecting. Dale enjoys readings in anthropology, sociology, astronomy, general science, and science fiction.

## WILLIAM P. WHEELER

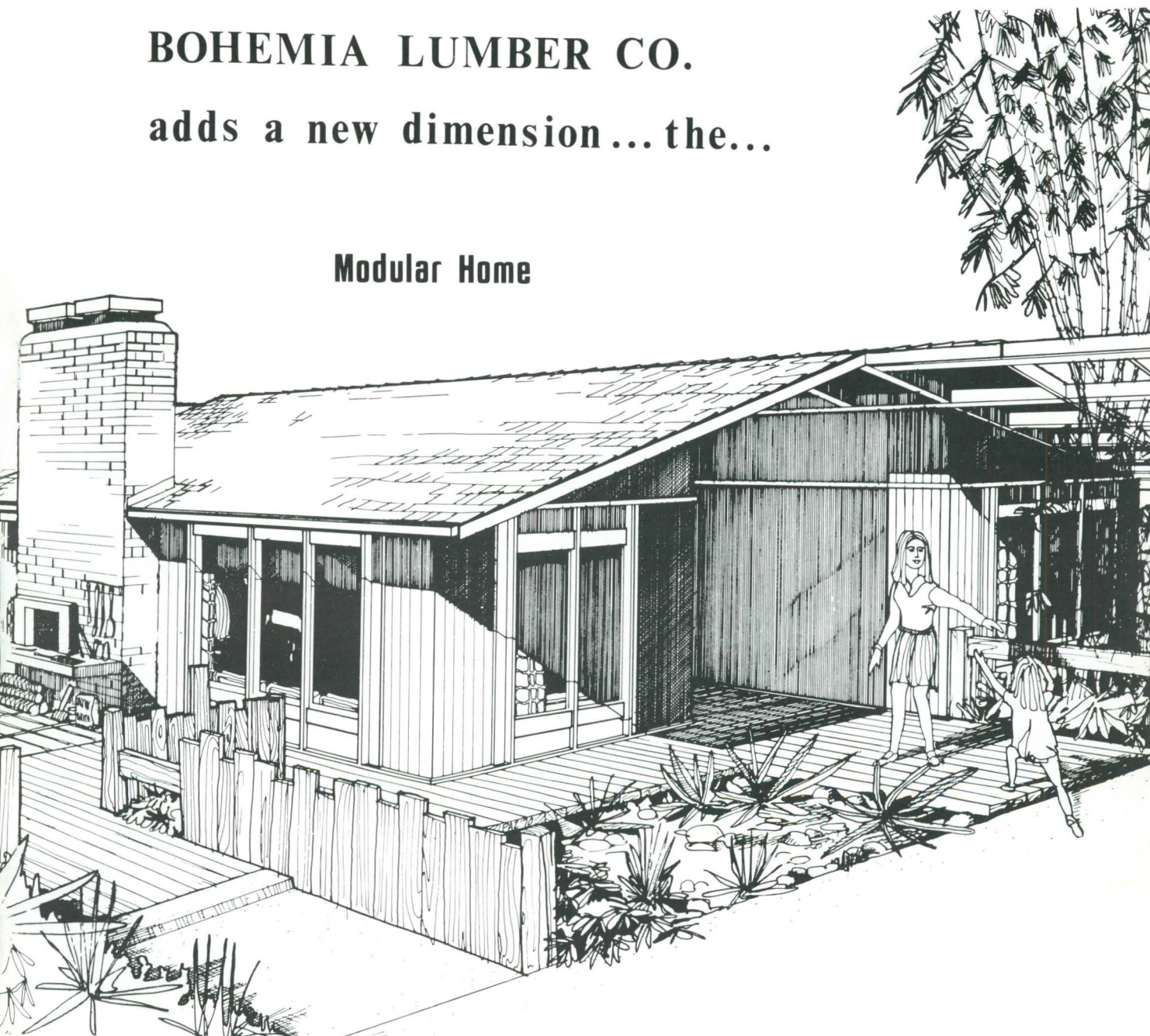
Bill came to OSU in 1949 after receiving his B.S. (1948) and M.F. (1949) from the University of Michigan. He earned his Ph.D. at New York State University, College of Forestry in 1967. Bill is interested in forest regeneration, tree seed physiology and tree improvement.





**BOHEMIA LUMBER CO.**  
adds a new dimension... the...

**Modular Home**





## STIHL American, Inc.

194 Greenwood Avenue,  
Midland Park, N. J. 07432,  
Code 201-445-0890

7364 Lee Industrial Boulevard,  
Mableton (Atlanta), Georgia 30059,  
Code 404-941-1730

23962 Clawiter Road,  
Hayward California 94541,  
Code 415-785-9100



# Some of the smartest production cutters are behind our new STIHL O50 AV saw!

**Ask the smart  
production cutters  
why so many have  
switched to our new  
STIHL O50 AV saw.**

Why they really go for Stihl's exclusive AV anti-vibration feature that practically eliminates muscle fatigue — through our patented system of built-in shock absorbers that absorb and reduce vibrations from the chain and engine — and gives them the smoothest cutting production saw around. Why not see for yourself... with the saw that gives you more power per pound than any saw in its class and lets you cut longer with less effort.



STIHL Northwest, Inc.  
2155 Market St.  
Chehalis, Wash.





Departments & Staff



# Forest Products

In the F.P. department someone can always think up something for the students to do.



There is always reading to do,

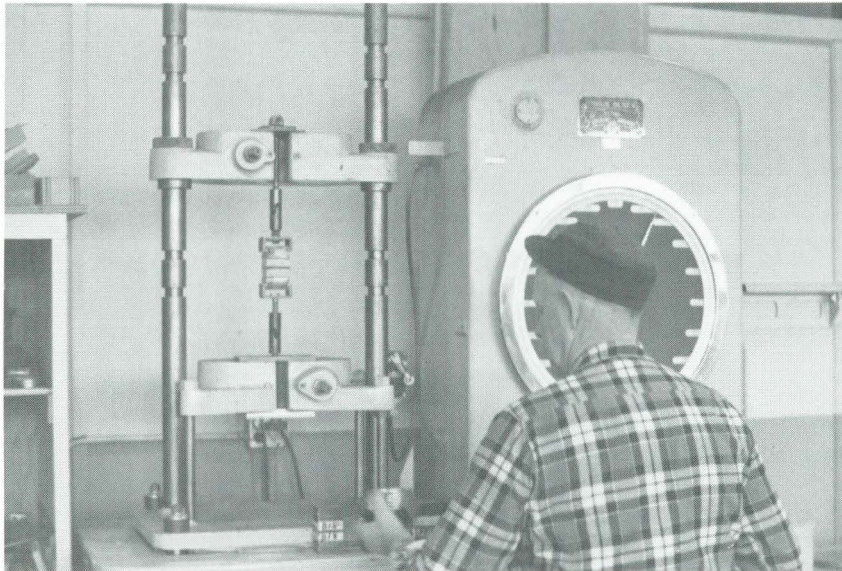


or a project to be completed.





The Forest Product student gains a knowledge of how, through the best utilization methods, to convert the forest's raw materials into everyday products. It is due to the F.P.'s that the various uses of wood are always increasing.



The internal bond strength of an experimental barkboard is being tested,



and the F.P. Rep spends a sunny afternoon watching plywood samples grow.



# Forest Products Staff



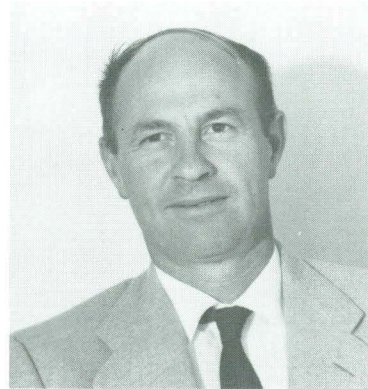
**HELMUTH RESCH**

Dr. Resch succeeded Everett Ellis August 1, 1970 as Forest Products department head, and also as head of the Forest Research Lab. Helmut received a degree in Forest Engineering from the College of Forestry in Vienna, Austria in 1956, then on a Fulbright Scholarship he earned his masters from Utah State University in 1958. Dr. Resch then returned to Vienna for his Doctorate degree. Helmut came to OSU from the University of California (Berkeley), where he had taught and done research since 1962. He lists his professional interests as "Wood physics and its application to industrial problems," while he enjoys fencing and many other outdoor activities also.



**GEORGE ATHERTON**

George has a B.S. and M.S. in mechanical engineering from OSU, received in 1950 and 1966 respectively. Structural research and timber design are his special interests. He has been at Oregon State since 1950.



**RAY CURRIER**

Ray is currently teaching the plywood and laminated products course at OSU. He is also doing research on bark utilization, adhesives and durability, and composite products.



**EVERETT ELLIS**

Integration of Wood Science and technology research and teaching into the School of Forestry curriculum design and educational measurement are of special interest to Everett. He has been at OSU since 1965. Everett has an M.S. (1943) from Michigan State and received his B.S. in forestry (1941) and Ph.D. (1956) from the U. of Washington.



**LEIF D. ESPENAS**

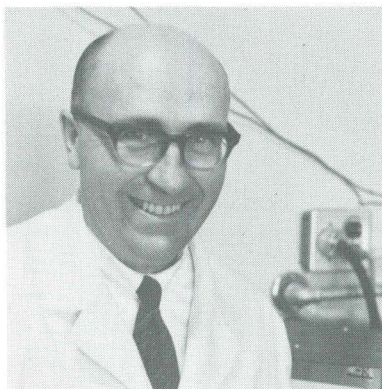
Leif earned his B.S. from New York State University in 1938 and his M.S. from the University of California in 1940. He came to the Oregon State Forest Research Laboratory in 1947.





**ROBERT L. KRAHMER**

Bob's special interests are wood structure related to wood properties and wood growth quality. He has been here since 1962. Bob earned both his B.S. (1958) in forest products and M.S. (1960) in wood tech at OSU. His Ph.D. (1962) in Wood Products Engineering was earned from New York State University.



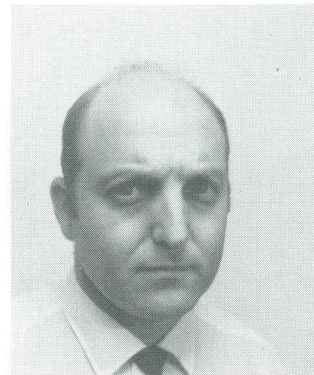
**M. L. LAVER**

Dr. Laver's main interest is Wood Chemistry. He obtained his B.S. from the U. of Toronto in 1955. In 1959 he earned his Ph.D. from Ohio State University. Dr. Laver has been at OSU since March 1969.



**MILFORD McKIMMY**

Mac is interested in wood growth quality relationships and genetic influence on wood quality. He came to OSU in the fall of 1953. Mac earned his B.S. at Michigan State in 1949, his M.S. at Oregon State in 1951, and his Ph.D. from New York State in 1955.



**ANTONE C. VANVLIET**

Tony has been teaching forest products courses at OSU since 1955. His special interests run from art to sports. Tony received both his B.S. and M.S. from OSU in 1952 and 1958 respectively. His Ph.D. was received from Michigan State in 1970 in Management and Communications.



**J. D. WELLONS**

Dr. Wellons joined the staff at OSU in the early summer of 1970. He received his B.S. in Forestry in 1960 from Duke University as well as his M.F. (1963) in Wood Science and his Ph.D. (1966) in Wood Chemistry. He enjoys gardening, fishing and keeping people from finding out what J.D. stands for.



**WILLIAM I. WEST**

Bill earned his B.S. from the University of Washington in 1939 and his M.F. from there in 1941. He has been at OSU since June of 1946. Travel, fishing, hiking and photography are among Bill's interests.



# Forest Engineering

The forest engineer learns how to deal with some of the current problems associated with logging such as layout, transportation and costs. He must know how to correlate ideas on paper to actual woods operations so as to achieve the most effective and efficient practice. The F.E. department strives to instill in the students a usable knowledge of survey skills.



## Logging Methods :

**past and present**









# Forest Engineering



**WILLIAM A. DAVIES**

Bill came to Oregon State in 1946 and is presently teaching upper division forest engineering courses. He has a B.S. in forestry (1938) and a M.S. (1946) from the University of Washington.



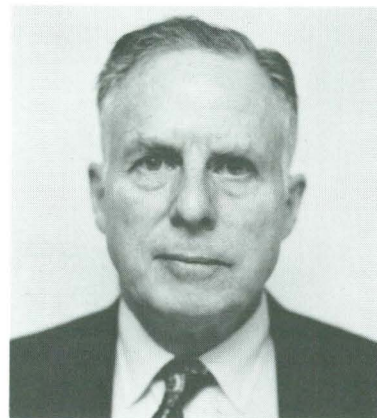
**JOHN E. O'LEARY**

John came to O.S.U. in 1949. He received his B.S. in forestry from Michigan in 1942 and his M.F. from Oregon State in 1947. Of particular interest to John is cable yarding in thinnings.



**ROBERT L. WILSON**

Bob has been here since 1952. His interests are skiing, beachcombing, fishing, and horses. He received his B.A. from the University of Iowa in 1942 and his M.F. in 1947.



**KEN McLAREN**

Ken graduated from the U.S. Naval Academy in 1934 with a B.S. in electrical engineering. He came to O.S.U. in 1960 and received his B.F. here in 1963. He now teaches labs in upper division forest engineering.



# LOGGERS' & CONTRACTORS' SUPPLIES

- \* WIRE ROPE  
YOUNG — SKOOKUM FORGINGS
- \* ESCO RIGGING
- \* YARDER BANDS LINED
- \* DUPONT EXPLOSIVES
- \* DISTRIBUTORS FOR ATLAS-COPCO  
DRILL STEEL BITS, ETC.

CALL PHILOMATH 929-3151  
AFTER HOURS

BOB MUIR 929-5199

LAWRENCE AYERS 929-3423

**TIMBER SUPPLY CO., INC.**

**TIMBER SUPPLY EXPLOSIVES, INC.**



# Forest Management

The forest management student acquires a knowledge of the various concepts and the interrelationships of the practices of protection, forestation, silviculture, mensuration, recreation and science. The F.M. department offers options in Forest Science or Forest Recreation.









# Forest Management



**J. RICHARD DILWORTH**

Forest Management

Dick has been at Oregon State since 1946. He has a B.S. (1937) and M.S. (1938) from Iowa State and received his Ph.D. from the University of Washington in 1956. Of special interest to Dick is remote sensing of natural resources features.



**JOHN F. BELL**

Forest Management

John received a B.S. in forestry from Oregon State in 1949 and a M.F. from Duke University in 1951. He came to O.S.U. in 1959. He lists lever-of-growing stock and three-P sampling as his special interest.



**GEORGE W. BROWN**

Forest Management

George came to Oregon State in 1966 and received his Ph.D. here in 1967. His special interests are water quality and forest hydrology. His Alma Mater is Colorado where he received his B.S. and M.S.





**WILLIAM K. FERRELL**

Forest Management

Bill came to O.S.U. in 1956. He received his B.S. in forestry at the University of Michigan in 1941 and his M.F. (1946) and Ph.D. (1949) from Duke University. Of special interest to Bill are forest ecology and tree physiology, especially studies in photosynthesis, drought resistance, and transpiration.



**ROBERT F. KENISTON**

Forest Management

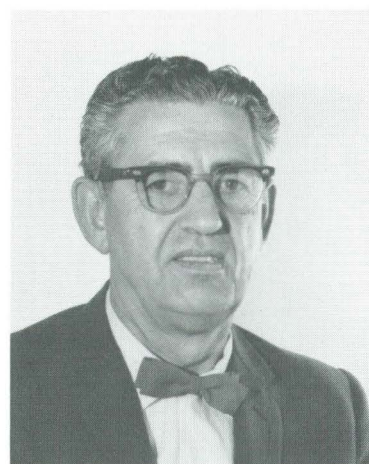
Bob has a B.A. (1929) in economics from the University of Nebraska, a B.S. (1937) and M.S. (1941) in forestry from the University of California, and a Doctor of Forestry (1962) in forest economics from Yale. He has been at O.S.U. since 1946. Grazing forestry-wildlife interrelationships are of special interest to Bob.



**CHARLES S. LEWIS**

Forest Management

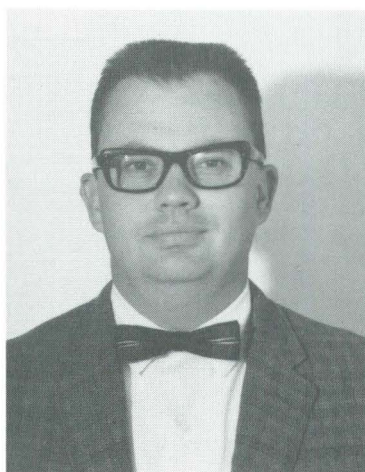
Chuck received his B.S. in forest management from Oregon State in 1942 and came here to teach in 1966. His special interests are logging costs and timber appraisal analysis and he has a personal interest in aviation.



**WILLIAM N. PARKE**

Forest Management

Bill retired after 33 years with the USFS in Washington, D.C. and came to O.S.U. in 1965. He earned his B.S. in forestry from Oregon State in 1933. Bill's special interests are camping, hiking, golfing, skiing and he is currently serving as Executive Secretary of Pacific Northwest Ski Areas Association.



**DAVID P. PAINE**

Forest Management

Dave received both his B.S. (1953) and M.S. (1958) from O.S.U. and his Ph.D. (1965) from University of Washington. His interests are photogrammetry and mensuration. Dave began teaching at O.S.U. in September of 1962.





RAY A. YODER  
Forest Management

Ray lists his main interests as forest taxation and forest industry problems. He earned his B.S. from O.S.U. in 1941 and his M.S. from Harvard in 1942. He came to O.S.U. in 1949.



DAN D. ROBINSON  
Forest Management

Dan has a B.S. (1940) from Oregon State and a M.F. (1942) from Syracuse. He has been at O.S.U. since 1944. Dan enjoys back-country treks, woodworking, fishing, and photography for classroom use.



LARRY STREEBY  
Forest Management

Larry received both his B.S. (1963) and his M.S. (1965) from Iowa State University. He came to OSU in 1970. Some special interests are classical guitar, photography, reading, fishing, and backpacking.



CHARLES SUTHERLAND  
Forest Management

Chuck received his M.F. from the University of Idaho in 1954, and his Ph.D. from University of Michigan in 1962. He came to OSU in 1959. Special interests are: Professional—productive economics and taxation; Personal—family, Christmas tree operations, and camping.



# Staff Flashback : January 1956



Left to right; First row—Harry Nettleton, J. R. Dilworth, Dean W. F. McCulloch, Dr. Geo. H. Barnes, W. A. Davies, H. R. Patterson, W. I. West.

Back row—R. F. Keniston, R. L. Wilson, M. D. McKimmy, J. T. Krygier, T. C. Adams, D. D. Robinson, Chuck Dane, R. M. Malcolm, R. A. Yoder, Wm. P. Wheeler, A. C. (Tony) VanVliet, W. R. Randall.



# The Office Staff



Linda



Leona



Joan



Much appreciation should be extended to our secretaries in the School of Forestry main office that are helpful to both professors and students.

Becky



Phyllis

Rita





# Self-Learning Center

Phil Crawford, Assistant Director of the Self-Learning Center, suggesting a new idea for use in student reporting to George Atherton, Professor of Forest Products.



In the Wood Utilization and Technology course students learn to identify the wood of various species of important trees by studying in the Center. In this course individual initiative is replacing the traditional laboratory approach.



The Center gives students technical assistance in making audio-visual presentations for their classes. SLC receptionist, Cindy Verzasconi, is helping forestry students Brian Nelson and Norman Michaels locate pictures for slides.



The Center continually revises its teaching materials. Bob Reichart, Director of the Self-Learning Center, examining some new slides to be inserted in a slide-tape presentation.

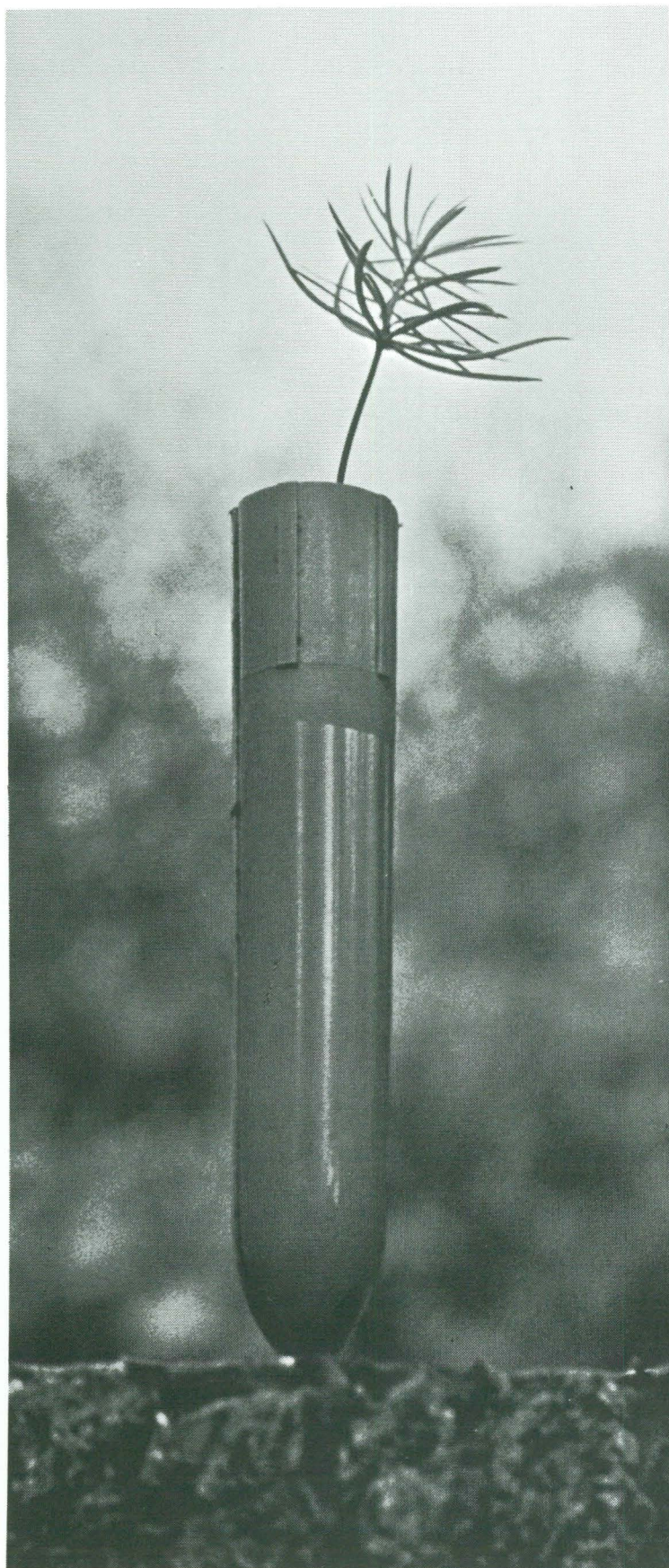


The Self-Learning Center uses many different types of teaching materials and methods, including television. As motion pictures of most forestry operations are not obtainable, the Self-Learning Center has made its own television pictures for student use.

These forestry students are studying different subjects in the SLC. This independent study method enables each student to work at his own rate and choose his own study time.







## Helping Mother Nature Meet Man's Needs

Through their scientific management of more than four million acres of timberlands, Georgia-Pacific foresters are helping "Mother Nature" provide the wood and wood fiber that are needed in ever-increasing quantities to meet the expanding needs of people.

Constant research is helping to unlock more and more of "Mother Nature's" secrets. One tangible result is the marked reduction in the time it takes to grow a crop of timber. Take Douglas fir, for instance. It wasn't too long ago that it required more—much more—than a normal lifetime for one crop to grow. Now, due to a combination of faster growth and better utilization, two crops are possible within one lifetime.

"Seed orchards," started more than a decade ago, are "paying off" for G-P with superior seeds that give promise of faster-growing and more disease-resistant trees. Currently, our planting and seeding techniques are being given serious study. One new process is the plastic container or "bullet" developed in Canada. We're trying to improve on it. Meanwhile, we're using this procedure in several areas with excellent results.

Good forestry and good foresters are important to G-P, now and as far as we can see into the future.

  
**GEORGIA-PACIFIC**  
GROWING FORESTS FOREVER



INTERNATIONAL INDUSTRIES, INC.  
P. O. Box 788 • ALBANY, OREGON 97321  
Phone—Area Code 503/928-3351 U.S.A.



COMPLETE  
SAWMILL  
SYSTEMS

WE ARE ALWAYS LOOKING FOR  
ENGINEERING AND SALES TALENT FOR  
OUR EXPANDING FIRM, AND  
PROSPECTIVE CLIENTS FOR  
OUR COMPUTERIZED WOODWORKING  
MACHINERY



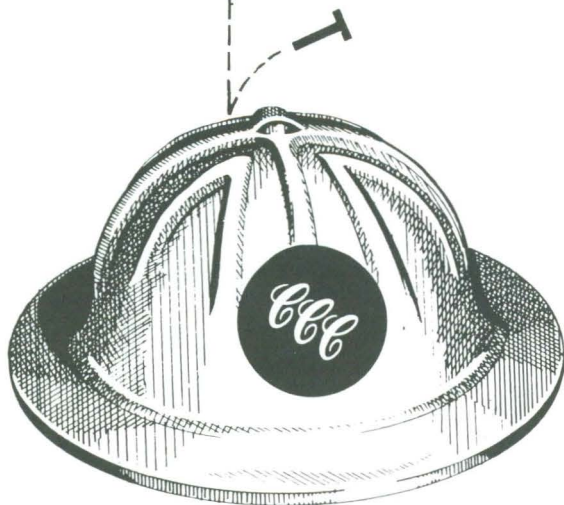
Forestry Graduates and Students: You are invited to join thousands of foresters and woodland operators and find "What you need—when you need it" at:

## Forestry Suppliers, Inc.

Box 8397, 205 West Rankin Street  
Jackson, Mississippi 39201

Quality Forestry, Engineering, and  
Industrial Supplies — SHIPPED WORLDWIDE

## PROTEC S INDUSTRY



COLE, CLARK & CUNNINGHAM INSURANCE  
222 S. W. Fourth Ave., Portland, Ore. • 222-9341

## HAVING TROUBLE



writing records  
in the rain?  
(or reading ?  
them later ?)

Then YOU Need the "Rain Insurance" You Get With

## "Rite in the Rain"

WEATHERPROOF WRITING PAPERS®

\* Here's just a few of the  
many firms who depend  
on "Rite in the Rain"

CROWN ZELLERBACH CORP.  
GEORGIA PACIFIC CORP.  
RAYONIER INC.  
SIMPSON TIMBER CO.  
ST. REGIS PAPER COMPANY  
TIMBER STRUCTURES INC.  
U. S. PLYWOOD CORP.  
WESTERN WOOD PROD. ASSN.  
WEYERHAEUSER CO.  
ALL SCALING BUREAUS

FIELD BOOKS & FILLERS

LOG SCALE BOOKS

TALLY BOOKS & SHEETS

TRUCK SCALE TICKETS

CRUISE SHEETS & BOOKS

SIGNS - TAGS - LABELS

YOUR SPECIAL FORMS

See your stationer, printer, or write for free catalog

**J. L. DARLING corporation**

2212 PORT OF TACOMA ROAD

TACOMA, WASH. 98421



# Students





## Graduate Students



Justin Chen  
Forest Economics



John Litvay  
Forest Products



Mark Smith



Bill Helpinstine  
Forest Management



Bill Sager  
Forest Management

## Graduate Students Not Pictured

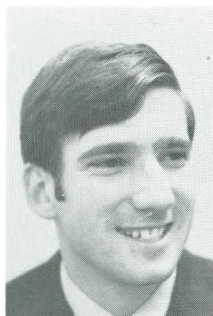
|                        |    |                          |    |
|------------------------|----|--------------------------|----|
| Abee, Albert           | FM | Meier, Gerald A.         | FM |
| Bachman, Ernest A.     | FM | Meng, Tommy Yi           | FP |
| Baughman, Ronald       | FE | Miller, James            | FM |
| Borrecco, John E.      | FM | O'Dell, Tharon           | FM |
| Brazier, Jon R.        | FE | Perng, Wu Rong           | FP |
| Chen, Chung Hsien      | FP | Peterson, Charles A.     | FM |
| Chia, Shun-Nan         | FP | Phipps, Kenneth L.       | FP |
| Clendenen, Gary W.     | FM | Pope, Walter William     | FM |
| Drew, Allan P.         | FM | Preest, David Stanley H. | FM |
| Emmingham, William H.  | FM | Reed, Kenneth L.         | FM |
| Fang, Henry H.         | FP | Rogers, Roger Allan      | FM |
| Fekete, John S.        | FM | Sager, William Edward    | FM |
| Forristall, Floyd F.   | FM | Scroggins, Thomas Lee    | FP |
| Gerdts, Carl R.        | FP | Short, Paul Henry        | FP |
| Griffin, Anthony       | FM | Smith, Earle Henry       | FM |
| Groman, William A.     | FM | Sorensen, Frank Curtis   | FM |
| Harmon, David W.       | FM | Spring, Richard Keith    | FM |
| Hellinga, Gerald A.    | FM | Stevens, Roderick Duran  | FM |
| Holbo, Harold R.       | FE | Sugano, Albert Itsuki    | FM |
| Johnson, Kenneth N.    | FM | Thevenon, Michel Jean    | FM |
| Johnson, Ralph R.      | FM | VanEerden, Evert         | FM |
| Johnson, Walter W.     | FP | Wang, Philip Hweig       | FP |
| Karchesy, Joseph J.    | FP | Webb, Warren Lewis       | FM |
| Knezevic, Olaf R.      | FP | Webber, John Edinburgh   | FP |
| Kunesh, Robert H.      | FP | Wolfson, Alan W.         | FM |
| Kuo, Yie-Hsiang (Lisa) | FP | Yang, Jenq-Chuan         | FM |
| Lai, Yu-Chai (Leslie)  | FP | Yang, Tsai-Yeong         | FP |
| Lauritsen, Donald A.   | FM | Zerrudo, Jose Velmonte   | FP |
| Lee, Gin-Fu (Larry)    | FP |                          |    |



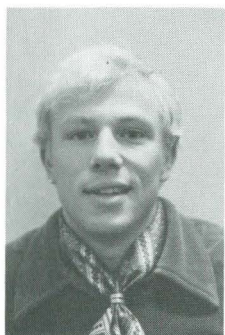
# Forest Management Seniors



Richard Coon  
Single  
Durham, Cal.  
Forestry Club  
Volunteer Fireman  
Dorm Hall Vice President  
Work Experience:  
5 seasons plus 2 full years with  
Cal. Division of Forestry  
Future Plans:  
California Division of Forestry



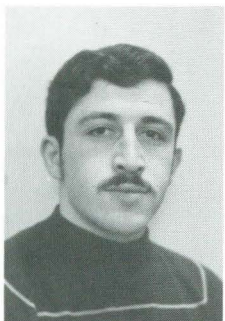
Roger Deville  
Single  
Vallejo, Cal.  
Forestry Club Secretary  
Fernhopper Banquet Chairman  
Hi-Lead  
Arnold Air Society  
Work experience:  
2 seasons U.S.F.S.  
4 seasons Vallejo Recreation District  
Future Plans:  
U.S.F.S.



David DeYoe  
Married  
Snow Skiing  
Work Experience:  
1 season U.S. Forest Sciences Lab  
2 years F.R.L.  
Future Plans:  
Graduate School



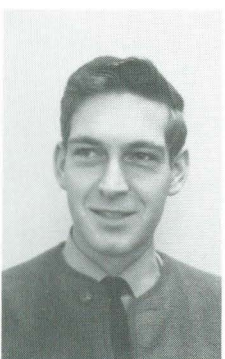
Tom Donovan  
Single  
Beaverton, Oregon  
Forestry Club Soph. Rep.  
A.W.F.C. Vice Pres.  
Xi Sigma Pi  
Blue Key  
Forestry Senator  
Max D. Tucker Award  
St. Regis Paper Co. Scholarship  
Sierra Cascade Logging Conf. Scholarship  
Work experience:  
2 seasons U.S.F.S.  
1 season St. Regis Paper Co.  
Future Plans:  
Private Industry



Boris Efron  
Single  
Menlo Park, Cal.  
Forestry Club  
Alpha Tau Omega  
Work Experience:  
1 season U.S.F.S.  
1 season B.L.M.



Alan R. Hemrich  
Married  
Portland, Oregon  
S.A.F.  
2nd. V.P. Forestry Club  
Treasurer Forestry Club  
Fernhopper Banquet Chairman  
Honor Board  
Work experience:  
4 seasons Dwyer Lumber & Plywood Co.  
2 seasons Textronix  
1 season Twin Pines Lumber Supply  
1 season McDonald Forest  
Future Plans:  
Private Industry



Ray Hewitt  
Married  
Weiser, Idaho  
Veterans Club Corr. Secretary  
Hi-Lead Editor  
Fernhopper Banquet Publicity Chmn.  
Forestry Club  
Work Experience:  
1 season U.S.F.S.  
2 seasons P.N.W. Forest & Range  
Experiment Station  
2 seasons Weyerhaeuser  
1 season B.P.  
Future Plans:  
Private Industry



Mike Hicks  
Single  
Vernonia, Oregon  
Forestry Club  
Annual Cruise  
Senior Rep  
O.S.U. Dads Club Scholarship  
Work Experience:  
4 seasons Crown Zellerbach  
1 season Green Empire Inc.  
Future Plans:  
Private Industry



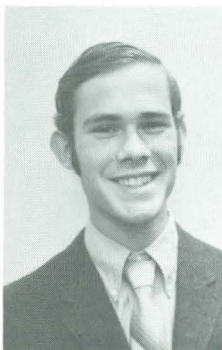
# Forest Management Seniors



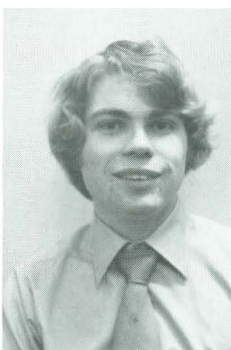
Tom Horner  
Single  
Pomona, Cal.  
Forestry Club  
Freshman Crew  
Cal. School Employees Assoc.  
Scholarship  
Work Experience:  
3 seasons U.S.F.S.



Dick Humiston  
Married  
Corvallis, Oregon  
Forestry Club  
Xi Sigma Pi  
Veterans Club  
Work Experience:  
2 seasons U.S.F.S.  
Future Plans:  
U.S.F.S.



Ron Iff  
Single  
Lake Oswego, Oregon  
Forestry Club  
Fernhopper Banquet  
Max D. Tucker Award  
S. Santiam Research and Education  
Foundation Scholarship



Rocky James  
Single  
Medford, Oregon  
Max D. Tucker Award  
Crown Zellerbach  
Work Experience:  
2 seasons U.S.F.S.



Gary L. Johnson  
Married  
Vale, Oregon  
Forestry Club President  
Junior Rep  
Freshman Rep  
A.W.F.C. Conclave  
Intramurals  
Derald Swift Memorial Fund  
Scholarship  
Work Experience:  
4 seasons B.L.M.  
Future Plans:  
Service



Tim Kosderka  
Married  
Portland, Oregon  
Forestry Club  
Xi Sigma Pi  
Hi-Lead  
S. Santiam Res. & Ed. Found. Scholarship  
Work Experience:  
3 seasons Oregon Dept. of Forestry  
Future Plans:  
State or Federal Forest Service



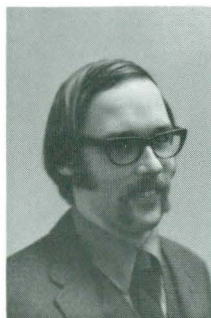
Michael R. Lee  
Married  
Cottage Grove, Oregon  
Xi Sigma Pi  
Forestry Club 1st. V.P.  
Work Experience:  
5 seasons U.S.F.S.  
Future Plans:  
MBA



Robert L. Magathon  
Married  
Beaverton, Oregon  
Honor Board  
Forestry Club  
Big Brother Program  
Work Experience:  
2 years F.R.L.  
1 season Publisher's Paper Co.



# Forest Management Seniors



Dan Maul  
Single  
Minneapolis, Minn.  
Xi Sigma Pi  
Forestry Club  
F. M. Rep  
Intramurals  
I.T.T. Rayonier Scholarship  
Cole, Clark, & Cunningham  
Scholarship  
Work Experience:  
1 season Simpson Timber Co.  
1 season Timber Access  
Future Plans:  
Travel



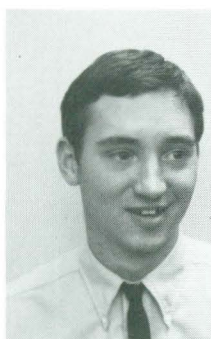
Pat McGillivray  
Single  
Eugene, Oregon  
Forestry Club  
Annual Cruise  
Work Experience:  
1 season U.S.F.S.  
1 season B.L.M.  
1 season Mud Bay Logging



R. Bryan Nelson  
Single  
Central Point, Oregon  
Forestry Club  
Work Experience:  
4 seasons State of Oregon  
Forestry Department



Dennis Reynolds  
Married  
Prairie City, Oregon  
ROTC Rifle Team  
Work Experience:  
4 seasons road construction



Bill Schoppert  
Single  
Stayton, Oregon  
Forestry Club  
Xi Sigma Pi  
A.W.F.C. Conclave  
Intramurals  
S. Santiam Ec. & Res. Foundation  
Scholarship  
Work Experience:  
1 season State Forestry Department  
2 seasons U.S.F.S.  
1 season private recreational  
developer



Lou Schwab  
Married  
Portland, Oregon  
Work Experience:  
2 seasons Burlington N. Railroads  
Timber & W. Lands Dept.  
Future Plans:  
Private Industry



Jeff Smith  
Single  
Juneau, Alaska  
O.S.U. Crew Team  
Forestry Club  
A.W.F.C. Vice President  
Annual Cruise  
Honor Board  
A.W.F.C. Conclave  
Work Experience:  
2 seasons State Forestry Dept.  
1 season Weyerhaeuser  
Future Plans:  
Peace Corp



Douglas L. Wells  
Married  
Livingston, Cal.  
Varsity Football  
Work Experience:  
5 seasons U.S.F.S.  
Future Plans  
U.S.F.S.



# Forest Engineering Seniors



Vince Brand  
Single  
Stayton, Oregon  
Honor Board Secretary  
Honor Board Chairman  
F. E. Rep  
Albert Powers Memorial Scholarship  
Work Experience:  
3 seasons contract logging  
Future Plans:  
Private Industry



Dennis Callahan  
Single  
Eugene, Oregon  
Forestry Club Secretary  
F. E. Rep  
Annual Cruise  
Conclave  
Spring Thaw  
Work Experience:  
3 seasons Weyerhaeuser  
Future Plans:  
Marine Corp Flight School



Jim Griffis  
Single  
Coquille, Oregon  
SAF  
Work Experience:  
1 season Gold Mountain Logging Co.  
2 seasons Forest J. Hales-Consulting  
Forester  
Future Plans:  
Service



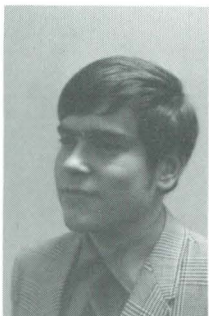
Frasier Hammons  
Single  
Shady Cove, Oregon  
Forestry Club  
Work Experience:  
1 season U.S.F.S.  
2 seasons Boise Cascade  
2 seasons Weyerhaeuser



Ed Hanscom  
Married  
Eagle Point, Oregon



Leonard Hanson  
Single  
Trail, Oregon  
SAF  
Forestry Club  
Work Experience:  
1 season Medford Corp.



Al Heyer  
Single  
Arvada, Colo.  
SAF  
Xi Sigma Pi  
2nd Vice Pres. Forestry Club  
Crown Zellerbach Scholarship  
Autzen Foundation  
Work Experience:  
1 season Simpson Timber Co.  
1 season U.S.F.S.  
1 season Timber Access Industries Co.



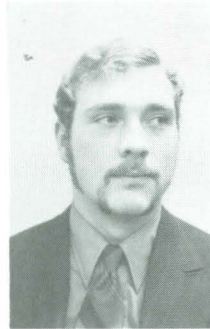
Rich Holmes  
Married  
Barrington, Illinois  
Forestry Club  
Work Experience:  
Oregon State Dept. Forestry



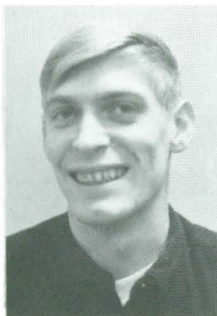
# Forest Engineering Seniors



Bob McRae  
Married  
Irrington, Oregon  
Forestry Club  
Oregon Logging Conference Scholarship  
Work Experience:  
1 season Grante, Gates, & Fox, Ball  
Construction  
1 season Morris Engineering  
1 season Oregon State Research Lab  
Future Plans:  
Private Industry



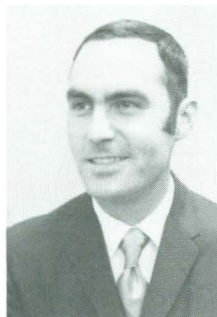
Edwin R. Perkins  
Single  
Oakridge, Oregon  
Forestry Club  
Work Experience:  
2 seasons U.S.F.S.  
Future Plans:  
Private Industry



Roger Snippen  
Married  
Albany, Oregon  
Forestry Club  
Work Experience:  
6 months U.S.F.S.  
1 season Forest Consultants  
1 season Weyerhaeuser  
Future Plans:  
Private Industry



Jim Sorenson  
Married  
Shelvin, Minn.  
Forestry Club  
Intramural Football  
Work Experience:  
2 seasons Weyerhaeuser  
Future Plans:  
Private Industry



Doug Stout  
Married  
Portland, Oregon  
SAF  
Xi Sigma Pi  
Forestry Club  
Floyd Hart Memorial Scholarship  
S. Santiam Ed. & Res. Grant  
Work Experience:  
1 season U.S.F.S.  
2 years Duraflake Co.  
2 years Brooks-Scanlon, Inc.  
Future Plans:  
Private Industry



Jim Stratton  
Married  
Portland, Oregon  
A.F.R.O.T.C.  
Scabbard & Blade  
Silver Wings Drill Team  
Work Experience:  
2 seasons U.S.F.S.



# Forest Products Seniors



Jon Chrysler  
Single  
Eugene, Oregon  
Forestry Club  
Phi Kappa Tau  
Beaver Photographer  
Work Experience:  
4 seasons U.S. Plywood  
Future Plans:  
Peace Corp or Service



Gary A. Deeke  
Single  
Portland, Oregon  
Forestry Club  
Veterans Club  
Work Experience:  
2 seasons Western Homes  
Future Plans:  
Private Industry



John H. Hatton  
Single  
Pendleton, Oregon  
F.P. Rep  
For. Prod. Res. Soc.  
SAF  
Veterans Club  
Fernhopper Banquet Chairman  
Blue Ox Ball  
Annual Cruise  
Xi Sigma Pi  
Work Experience:  
1 season Boise Cascade  
Future Plans:  
Private Industry



Robert K. Horton  
Single  
Toledo, Oregon  
Forestry Club  
Warren Randall Scholarship  
Tucker Award  
Work Experience:  
4 seasons G.P. Paper Lab  
Future Plans:  
Army



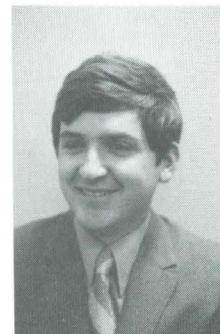
Jerry Obendorf  
Single  
Cove, Oregon  
Forestry Club  
F.P. Rep  
Fernhopper Banquet  
Work Experience:  
2 seasons U.S.F.S.  
1 season F.R.L.  
1 season Boise Cascade  
Future Plans:  
Private Industry



Bruce R. Palmer  
Married  
Boise, Idaho  
Veterans Club Pres.  
For. Prod. Res. Soc.  
Forestry Club  
Annual Cruise  
Fernhopper Day  
Work Experience:  
2 seasons B.L.M.  
1 season F.R.L.  
1 season S.L.C.  
Future Plans:  
Private Industry



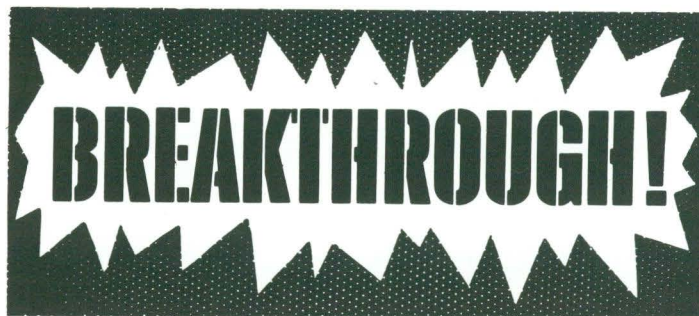
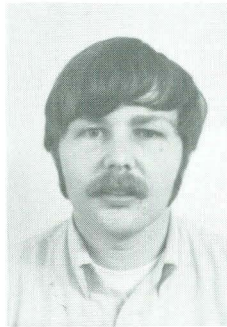
Rod L. Remington  
Married  
Toledo, Oregon  
Xi Sigma Pi  
Forestry Club  
Veterans Club  
Future Plans:  
Private Industry



Ray Slaughter  
Married  
Eugene, Oregon  
Annual Cruise Editor  
For. Prod. Res. Soc.  
Forestry Club  
Phi Kappa Psi  
Work Experience:  
7 seasons G.P. Plywood mills  
Future Plans:  
Private Industry

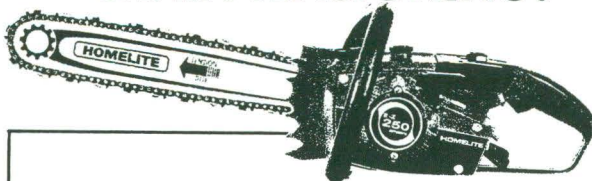


Bruce Bevard  
Eugene, Oregon  
Married  
Xi Sigma Pi  
Veterans Club  
Work Experience:  
3 seasons Weyerhaeuser  
Wigwam Burner Project  
Future Plans:  
Graduate School



## NEW HOMELITE<sup>®</sup> EZ-250 AUTOMATIC

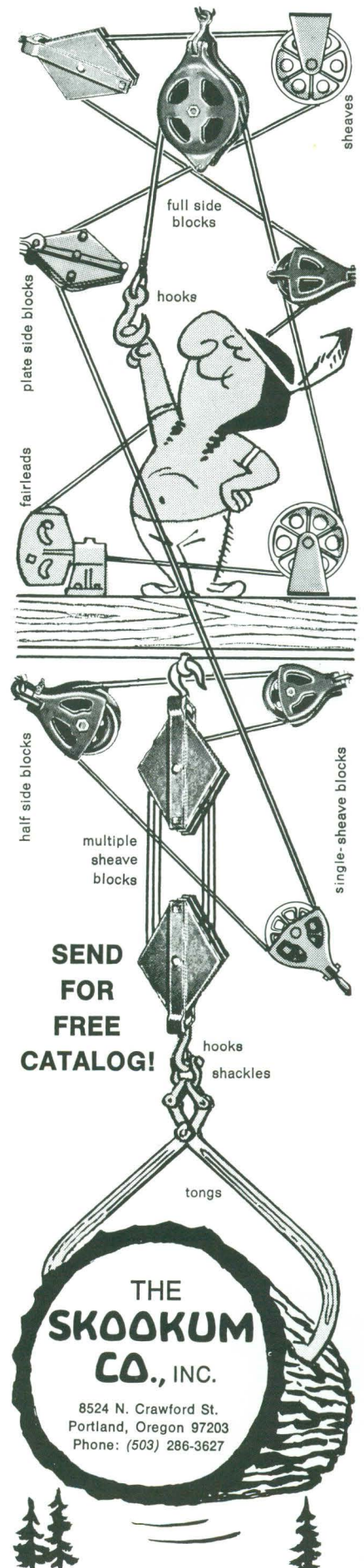
**WORLD'S FIRST CHAIN SAW  
WITH AUTOMATIC  
CHAIN TENSIONING!**



### Check these Pro features

- New Tension-Rite™ automatic chain tensioner\*
- Increased power
- New Softone™ super-quiet muffler
- New cushion grip handle bar
- New idle speed tachometer
- New fuel and oil cap retainers

\*Pat. Pend.



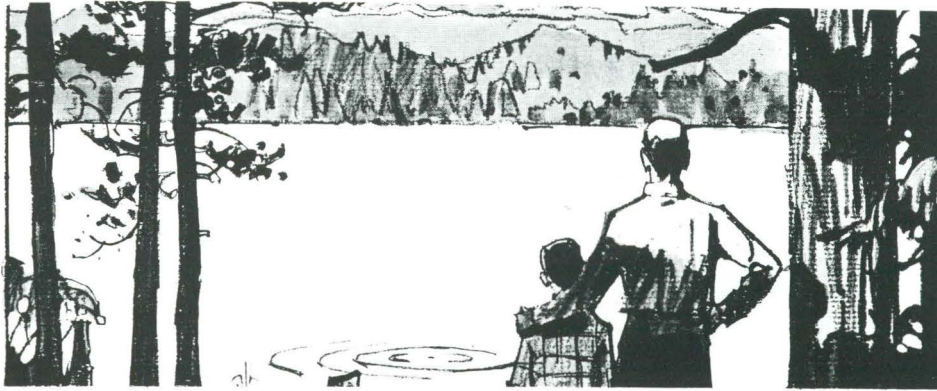
**SEND  
FOR  
FREE  
CATALOG!**



**THE  
SKOOKUM  
CO., INC.**

8524 N. Crawford St.  
Portland, Oregon 97203  
Phone: (503) 286-3627





## **AIR-WATER- LAND-TREES**

**...essentials of environment**

As population and human needs increase, we see our air, water, land and trees in a new and more important role. The interdependence of all four is a fact that cannot be ignored. How each is treated and conserved for human use determines the quality of human life.

In our business, these are the resources that are basic to the thousands of products derived from wood, all of which contribute to the betterment of living.

A perpetual cycle of healthy forest growth, harvesting and re-growth depends upon fertile soil with clean air and water in abundance.

Throughout our operations, we are committed to a policy of safeguarding and increasing these resources. They represent the mainstay of our environment and the foundation of our hopes for the future.



**WILLAMETTE INDUSTRIES, INC., Albany, Oregon**

**M  
E**

### **SAWMILL DESIGN, PLANT MODERNIZATION AND AUTOMATION**

- Sawmill systems designed to produce maximum from your timber.
- Project engineers
- Economic feasibility studies and profit analysis for new and existing forest products plants.
- Prospectus preparation.
- Foreign and domestic.
- Bark utilization.
- Insurance appraisals.
- Hardwoods, softwoods.
- Marketing studies.

**EXTENSIVE EXPERIENCE IN THE DESIGN OF SPECIAL MACHINES  
TO SOLVE FOREST INDUSTRY PRODUCTION PROBLEMS**

### **MATER ENGINEERING**

Professional Consulting Engineers  
P.O. Box 0 — Corvallis, Oregon 97330 — Tel. (503) 753-7335





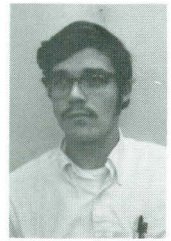
Steve Asher  
Troutdale, Oregon  
FM



Steve Brown  
McMinnville, Oregon  
FM



Eric Butler  
Belleville, Ill.  
FE



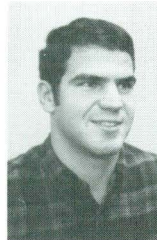
Leslie Chapman  
Cottage Grove, Ore.  
FM



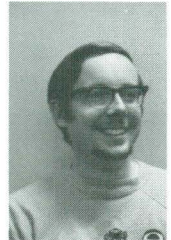
Steve Cole  
Eugene, Oregon  
FM



Jim Coyle  
Lebanon, Oregon  
FM



Mike Donovan  
Beaverton, Oregon  
FP



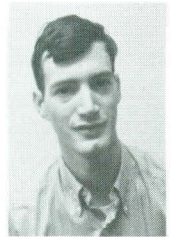
John Drummond  
Mentone, Cal.  
FE-FM

## Non-graduating

## Seniors



Randall Lau  
Honolulu, Hawaii  
FM



Lloyd Limprecht  
Milpitas, Cal.  
FM



Lou McCarthy  
Coos Bay, Oregon  
FE



Mike Macy  
Baker, Oregon  
FM



Milton M. Roche  
Philomath, Oregon  
FE



Pat Tomlin  
Parkdale, Oregon  
FE-FM



Glenn Wentz  
San RaFael, Cal.  
FM



Al Wilson  
Salem, Oregon  
FM



Andy Winkle  
Nampa, Idaho  
FP



# 



Chuck Alluisi  
 Portland, OR  
 FM-Rec



Dave Bateman  
 Salem, OR  
 FE



Mike Bormuth  
 Grants Pass, OR  
 FM



Richard W. Cettel  
 Portland, OR  
 FM



Tom Collier  
 Pendleton, OR  
 FM



Ron Cook  
 Anderson, CA  
 FE



Dave DiZinno  
 Wexford, PA  
 FM



Mike Tomich  
 FM



Mark Donaldson  
 Coos Bay, OR  
 FE



Dave Eberhardt  
 Fairbanks, AL  
 FM



Marty Frank  
 Springfield, OR  
 FM



Steven Y. Grubb  
 Eugene, OR  
 FE



Brent Hennings  
 Williams, OR  
 FE-FM



Truxtun Hildner  
 Pacific Palisades, CA  
 FM



Ray Hoyt  
 Portland, OR  
 FM



Rex Hutchins  
 Sherwood, OR  
 FM-Rec



Monte Jackson  
 Glen Elder, Kansas  
 FM



Terry Johnson  
 Salem, OR  
 FM



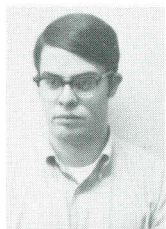
David E. Jordan  
 Deer Island, OR  
 FP



Bob Kirk  
 Downey, CA  
 FM



# **Juniors**



Bob Lenci  
Roseburg, OR  
FE & FM



Bruce MacDonald  
Klamath Falls, OR  
FM



Bob Mahon  
Elgin, OR  
FM



David Mattson  
Eugene, OR  
FE



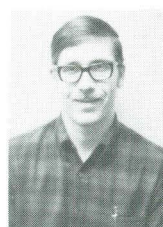
Kit Metlen  
Unity, OR  
FM



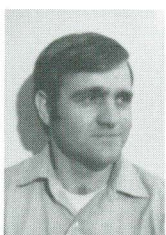
Dave Orr  
Prineville, OR  
FM



George Pickett  
Florence, OR  
FE



Phil Raab  
Hillsboro, OR  
FM



Bill Ruppert  
Ontario, OR  
FP



Dick Schaertl  
Coos Bay, Oregon  
FM



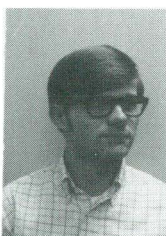
Eric Schoblom  
Albany, OR  
FM



Dave Shetler  
Scotts Mills, OR  
FE-FM



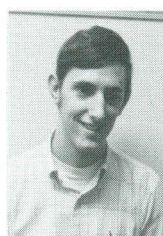
Barte Starker  
Corvallis, OR  
FM



Steve Stephenson  
Clarksville, Tenn.  
FM-Rec



Aaron Thayer  
Corvallis, OR  
FM



Brad Toman  
Salem, OR  
FM



Brian Tuor  
Luster, WA  
FE



David Vagt  
St. Helens, OR  
FE



Mike Waite  
Salem, OR  
FM



Scott Wise  
Pasco, WA  
FM



# Sophomores



Marvyn Andreson  
Burbank, Calif.  
FM



Janet Ayer  
Portland, Oregon  
FM



Steve Bardell  
St. Helens, Oregon  
FM



Gerald Bittle  
Creswell, Oregon  
FM



Nancy Comstock  
Cove, Oregon  
FM-Rec.



Gary Candelaria  
Pico Rivera, CA  
FM



Neil Eldridge  
Springfield, OR  
FM



Earl Emerson  
Centralia, WA  
FM



Edwin Fisher  
Astoria, Oregon  
FM



Dick Gerhardus  
Clackamas, OR  
FM



Neal Gregory  
Beaverton, Oregon  
FM



Bob Herbage  
Roseburg, Oregon  
FM



Dean Johnson  
Redmond, Oregon  
FE



Kirk Johnson  
Los Altos, Cal  
FE



Russel Meyer  
Carmichael, Cal  
FM



Gary Miller  
Midland, Ore  
FM



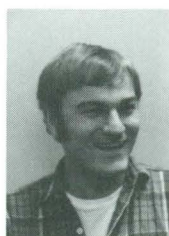
Steve Potwin  
Medford, Ore  
FM



Warren Scott  
Philomath, Ore  
FE



Dennis St. Clair  
Lincoln City, Ore  
FM



Dave Stella  
St. Helens, Ore  
FE



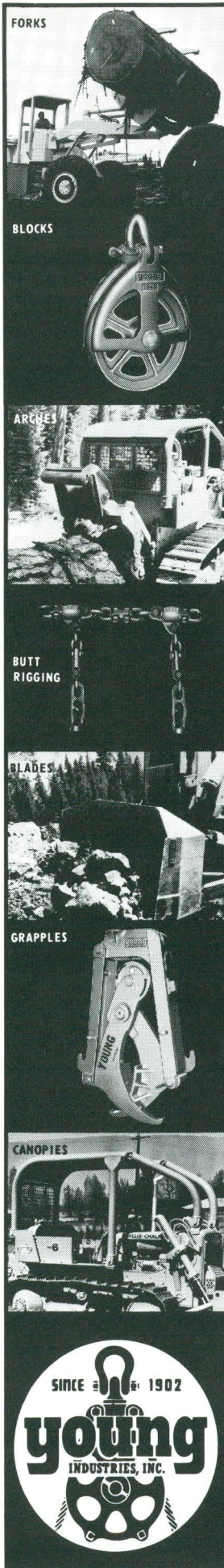
## Sophomores



Bill Wallace  
Orland, Cal.  
FM



Robert R. Wheeler  
McKenzie Bridge, Oregon  
FM



*AVAILABLE  
WORLDWIDE*

**young**  
*rigging  
and log handling  
equipment*

Designers and manufacturers  
of one of the world's most  
complete lines of quality  
BLOCKS, FITTINGS, TOOLS  
and ATTACHMENTS FOR  
SHOVELS, CRANES  
and TRACTORS.

Since 1902

YOUNG EQUIPMENT IS MANUFACTURED  
IN THE U.S.A. AND CANADA. AVAILABLE  
THROUGH EQUIPMENT DEALERS  
INTERNATIONALLY.

**WRITE FOR CATALOGS:**

- No. 301—Shovel and Crane Attachments
- No. 401—Tractor Equipment
- No. 500—Blocks and Rigging

**YOUNG INDUSTRIES, INC.**

Main Office: P.O. Box 3522, Seattle, Washington 98124  
Branch: P.O. Box 2822, Eugene, Oregon 97401



# Freshmen



Keith Braun  
Lake Oswego, OR  
FE



Mack Brown  
Eugene, OR  
FM



Richard Brown  
Antioch, CA  
FE



Beth Chaffey  
Lake Oswego, OR  
FM



Dave Cole  
Island Park, ID



Bob Colella  
Seattle, WA  
FP



Tom Crossland  
Salem, OR



Kurt Davey  
Portland, OR  
FM



Steve Davis  
Salem, OR  
FM



Bob Dawson  
Encino, CA



Gary Dodds  
Lake Oswego, OR  
FM



Jean Drolet  
Cumberland, RI  
FE



Kathy Farr  
Portland, OR  
FM



Leroy Feigelson  
Portland, OR



Kim Foster  
Portland, OR  
FM



Dave Fuller  
Gervais, OR  
FM



Scott Grant  
Bellingham, WA  
FM



Mark Gruener  
Portland, OR  
FM



Chris Gustafson  
Salem, OR  
FE



Scott Harris  
Beaverton, OR  
FM



# Freshmen



Hech Hatch  
Eugene, OR  
FE



Von Helmuth  
Bakersfield, CA  
FM



Ferald Hickerson  
Arlington, OR  
FE



Sue Hillier  
El Monte, CA  
FP



Roy Hogue  
The Dalles, OR  
FM



David Holton  
Dallas, OR  
FM



Dan Huff  
Grants Pass, OR  
FM



David Jacobson  
San Morino, CA  
FE



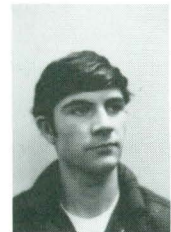
Tim Keith  
Rogue River, OR  
FE



Frank Kidd  
Dodge City, KS  
FM



Jezelle Kleiber  
Newport, OR  
FM



Jeff Larson  
Eugene, OR  
FE



Nick Lunde  
Corvallis, OR  
FM



Richard Mallen  
Portland, OR  
FM



Don Matlick  
Klamath Falls, OR  
FM



Pete Moon  
Portland, OR  
FE



Pat Moore  
Portland, OR



Dell Needham  
Salem, OR  
FM



Robert Nulph  
Hammond, OR  
FM



Carl Paasche  
Corvallis, OR  
FM



# Freshmen



Mike Regan  
Memphis, TN  
FM



Gordon Reinhart  
Warroad, MN



Joel Reynolds  
Lake Oswego, OR  
FM



Byron Sahnou  
Hillsboro, OR  
FM



Jeffrey Schwanke  
Gaston, OR  
FM



Tom Speetzen  
San Mateo, CA  
FM



Daniel Steffen  
Portland, OR  
FM



Steven Steiner  
Tillamook, OR  
FM



Richard Stewart  
Portland, OR  
FM



Ron Swisher  
Salem, OR  
FM



Robert Vance  
Portland, OR  
FM



Marc Vomocil  
Corvallis, OR  
FM



Peter Wendel  
Lafayette, CA  
FM



Roger Williams  
Vancouver, WA  
FM



Harold Salo  
Astoria, OR  
FM



## TELLING IT STRAIGHT

As any successful athletic coach knows, the best defense is a good offense. This also holds true in communication with the public.

As stewards of private land, raising trees in the public interest, we have a good story to tell about environmental protection and improvement. We try to tell it straight. We cut down trees and we put new trees on the land. We've been doing this for 81 years. The system works and we're proud to show anyone our lands to prove it.

### SIMPSON TIMBER COMPANY

Oregon operations in Albany, Eugene, Lebanon and Portland

#### FOR THE USE OF FORESTERS-ENGINEERS-LAND SURVEYORS



|   |             |
|---|-------------|
| <i>Calders' Per Cent Abney Reduction Tables</i> | <i>\$1</i>  |
| <i>Calders' Forest Road Engineering Tables</i>  | <i>\$5</i>  |
| <i>Calders' Natural Cosines and Sines Table</i> | <i>\$4</i>  |
| <i>Calders' Perspicuous Treatise</i>            | <i>Free</i> |
| <i>Calders' Declination Rectifier</i>           | <i>Free</i> |



Any or all three of these books will be mailed  
postpaid for 30 days trial use



#### CALDER'S' ENGINEERING TABLES

1828 HILYARD  
EUGENE, OR. 97401

**MORE FORESTERS  
MARK WITH  
NEL-SPOT  
PAINT AND  
PAINT MARKING  
PRODUCTS  
THAN WITH  
ANY OTHER**



The next time you have a marking problem why don't you do as the thousands of other foresters do. Lick the problem with NEL-SPOT.

#### NELSON PAINT COMPANY

IRON MOUNTAIN, MICHIGAN  
MONTGOMERY, ALABAMA  
McMINNVILLE, OREGON



# Organizations





# Forestry Club



## EXECUTIVE COUNCIL

Front row, left to right: Jeff Smith—AWFC Rep; Al Heyer—2nd V.P.; Roger Deville—Secretary; Beth Chaffey—Freshman Rep; Gary Johnson—President; Brent Hennings—Jr. Rep; John Hatton—FP Rep. Back row: Ray Slaughter—Annual Cruise Editor; Mike DeArmond—Soph. Rep; Dan Maul—FM Rep; Dennis Callahan—FE Rep; Al Hemroch—Treasurer; Tim Donovan—Forestry Senator; Mike Lee—1st V.P.; Ray Hewitt—Hi-Lead Editor. Mike Hicks—Sr. Rep, not pictured.

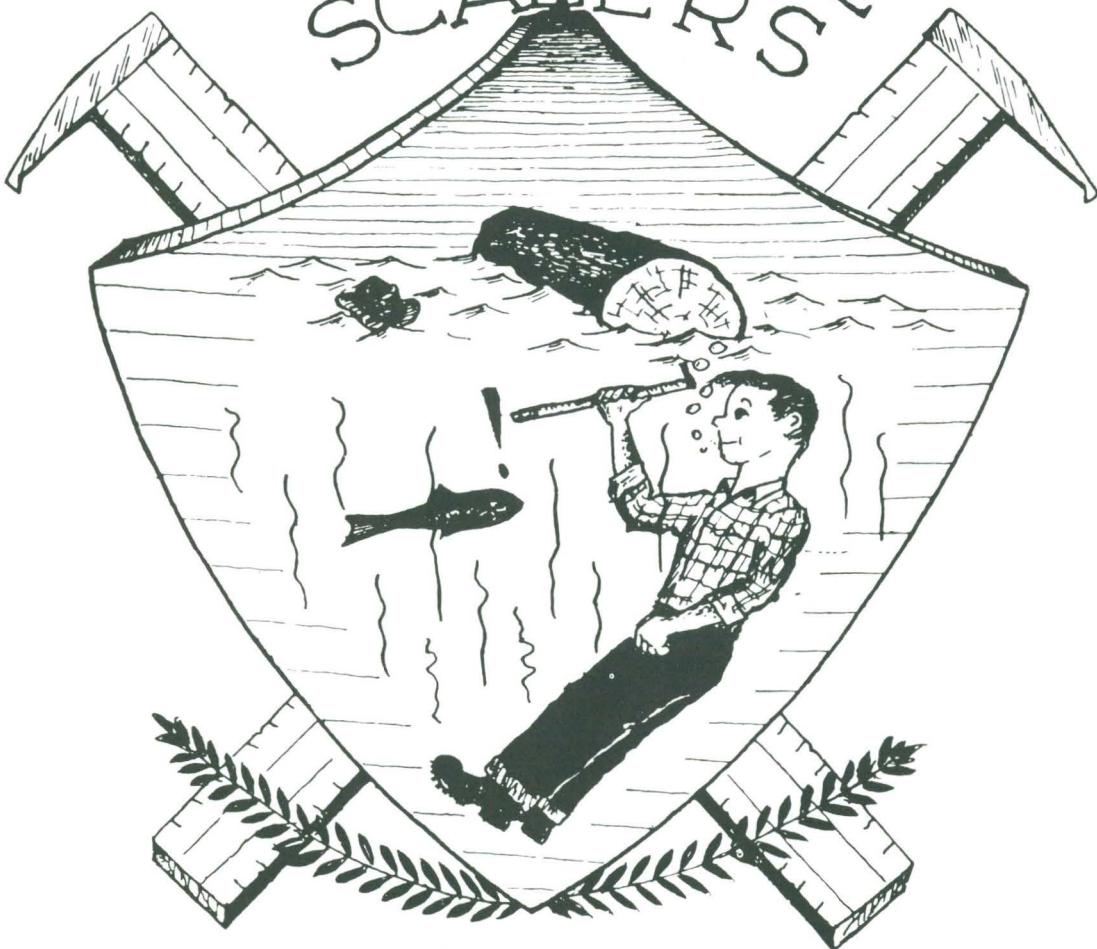
Since the adoption of its first constitution in 1906 the Forestry Club has had for its purpose the promotion of character, leadership, fellowship and good will among its members. Accomplishment of this purpose is the essence behind all club activities. Membership is open to all OSU Forestry majors, minors, alumni, and faculty. Upon payment of their annual dues members resolve to support club activities, the main ones of which are: Mac Forest Day, Fernhoppers Banquet, Spring Thaw, the Annual Cruise, and the Hi-Lead.

An attempt was made this year to get both married and unmarried students involved in as many club activities as possible. Three new activities were initiated to help accomplish this aim, they were the Halloween Party and Hay Ride, the Fun and Games Night, and the Hoodoo Ski Trip. The Halloween Party and Hay Ride was by far the biggest success of fall term.

However, the club accomplishes none of its goals without the wholehearted, enthusiastic, and organized effort of the students, who work to make the club successful and find in return greater values and success in reaching their own personal goals.



# The Royal Order of SUBMARINE SCALERS



By these criterion ye  
shall know and  
recognize them:

Purple noses  
Chronic coughs  
Creaking boots  
Barked-stained clothing  
Water-soaked eyeballs

ACTIVE MEMBERS  
Royal Order  
Sub-Scalers

Bill Hanley  
Tom Hartman  
Louis House  
Jim Newell  
Pete York



ALPHA CHAPTER  
ESTABLISHED AT  
OREGON STATE SCHOOL  
of FORESTRY ~ FALL 1946



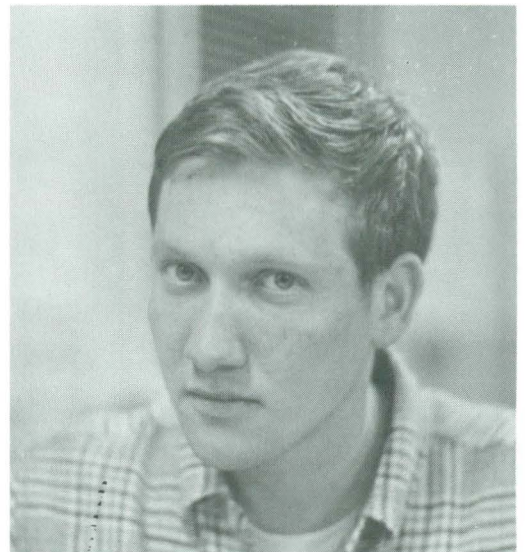
# Annual Cruise Staff



Ray Slaughter, Editor

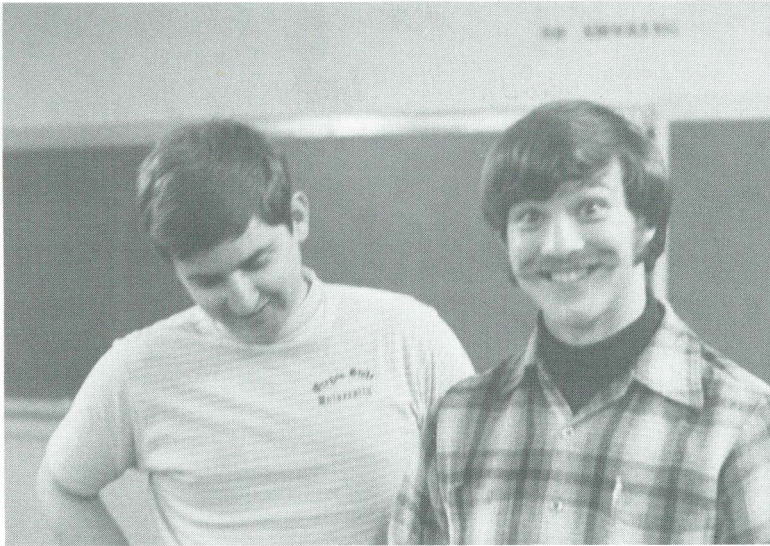


Jeff Smith, Layout

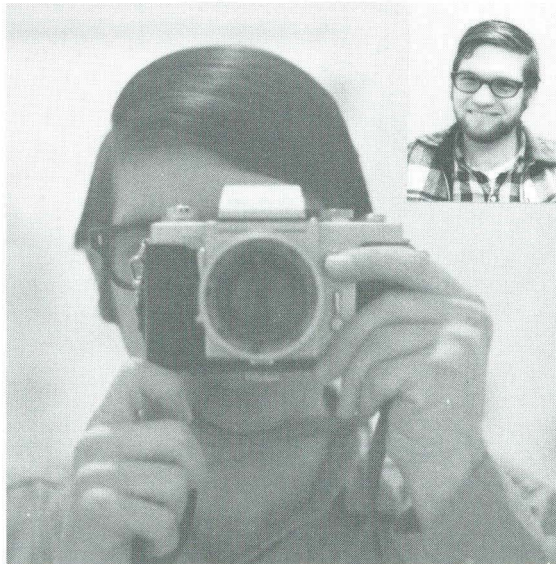


Lou McCarthy, Layout

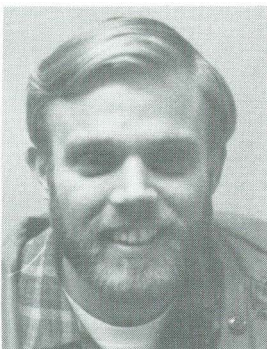




Ray Slaughter with one of the Advertising and Business Managers, Mike Hicks. The other Advertising and Business Manager, Pat McGillivray, is not pictured.



John Hatton, Photographer



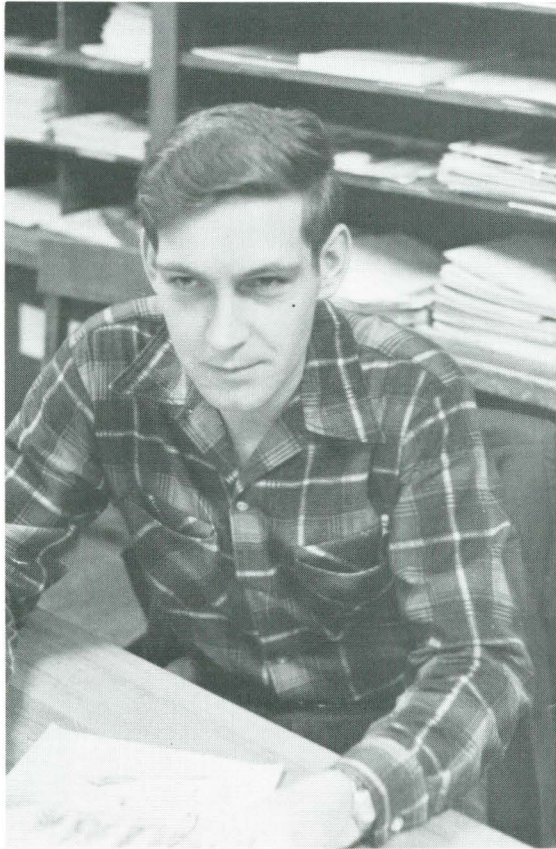
Bruce Palmer, Layout



Dennis Callaghan, Copy Editor



# Hi-Lead

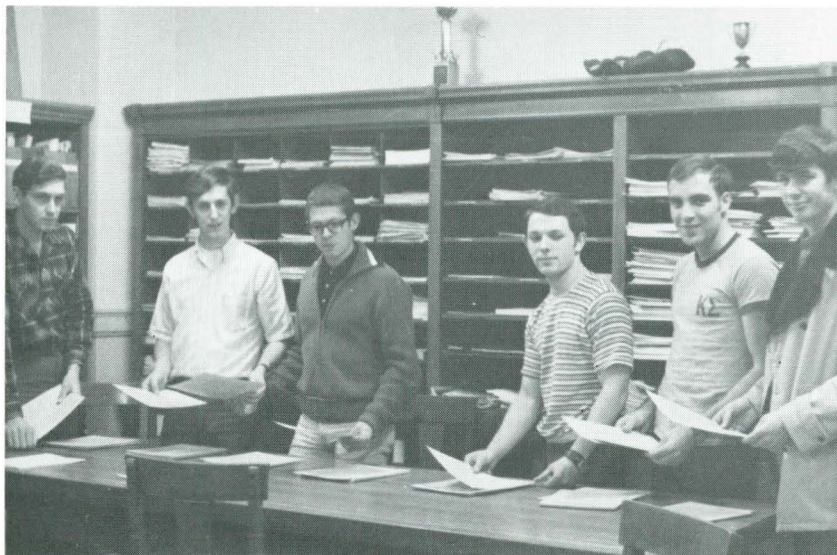


Ray Hewitt, Editor

The Hi-Lead is the Forestry Club's newspaper. It publishes 300 to 500 copies at each printing. It serves primarily the students and faculty, with one copy each month going to the Archive in Kidder Hall and to the OSU Library, Serials Division. Courtesy copies were placed this year in the coffee rooms of the OSU Forest Research Lab and the USFS Forest Science Lab.

The Hi-Lead this year achieved its goal of publishing once each month. This has not been done in recent years.

I wish to express my appreciation to the Hi-Lead staff who deserve worthy recognition for their supporting efforts. A special thanks to all the students and faculty members who submitted articles to the Hi-Lead this year.



Hi-Lead staff, left to right, are: Ray Hewitt, Editor; Brad Toman, reporter; Brent Hennings, reporter; Tim Kosderka, assistant editor; Dave Orr, assistant editor; Mike DeArmond, cartoonist; and not pictured, Ginny Hemrich, typist.



# Xi Sigma Pi



Student members of the fraternity gather here with Phil Crawford at the club cabin after the fall term steak fry. In the front row left to right, are the officers: Dan Maul, Assistant Forester; Bill Shoppert, Forester; Dick Humiston, Fiscal Agent; and Al Heyer, Ranger. Back row: Tim Kosderka, Tim Donovan, Doug Stout, Rod Remington, Mike Lee, John Hatton, and Phil Crawford-Advisor.

The purpose of Xi Sigma Pi is to recognize forestry students of above average scholastic achievement and to promote among foresters the ideals of eternal friendship, manly honor, and earnest endeavor.

Xi Sigma Pi was busy this year supplying coffee and donuts to high school students and their parents at Beaver Open House, to forestry alumni at the Fernhoppers Banquet, and coffee and steaks to faculty at the steak fry which was held on May 7. The major projects for the year were to update the Xi Sigma Pi records and files, and to revise the slide tape presentation "The Forestry Student at College."

The current student members are: Dave Bateman, Bruce Bevard, Robert Craig, Tim Donovan, Dave Edwards, Marty Frank, Dennis Golik, Bill Groman, Richard Gustafson, Dave Harman, Kerry Hart, John Hatton, Al Heyer, Ottis Hollowell, Harold Hoyt, Dick Humiston, Ronald Iff, Rocky James, Tim Kosderka, Mike Lee, Dan Maul, Phillip McIntyre, James McRae, Y. (Tommy) Meng, Norman Michaels, Donald Nettleton, Donald Ostby, Rod Remington, Bill Shoppert, Rick Spring, Doug Stout, and Brian Tuor.



# Honor Board



Honor Board members from left to right are: Robert Magathon, Bill Rupert, Marty Frank, Chairman and Jeff Smith.

The Honor Board acts as an advisor to the Dean in dealing with violations of the School's Honor Code.

The School of Forestry is the only school on campus which has an honor system developed and run exclusively by students. The five student members are elected each year by the forestry students and serve a one year term, with one member carried over for a second term. Three of the five members on the board are upperclassmen and two are underclassmen. A faculty advisor acts as a non-voting member of the board.

## *Best Wishes*

FROM

**H. G. CHICKERING, JR. & ASSOCIATES**

**CONSULTING PHOTOGRAMMETRIST, INC.**

1190 Seventh Ave. West  
Post Office Box 2767

**AERIAL SURVEYS — PHOTOMAPS — TOPOGRAPHIC MAPS  
FOREST TYPE MAPS A SPECIALTY**

CURRENT OPERATING AREA  
THE FIVE NORTHWESTERN STATES AND S.E. ALASKA





Activities

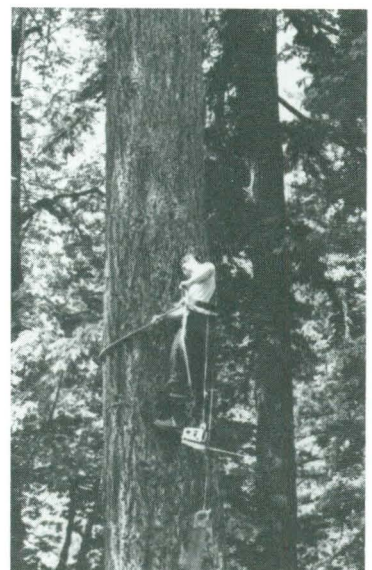
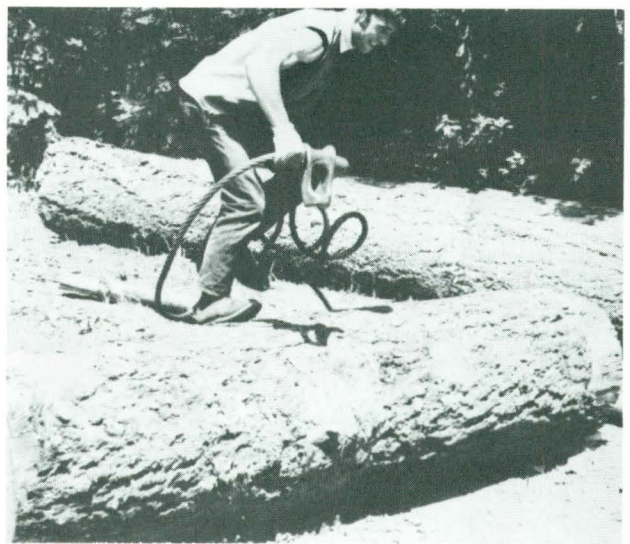
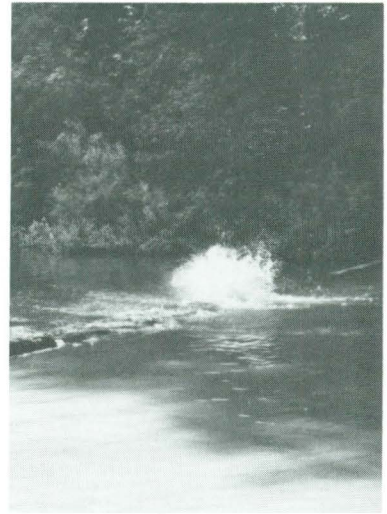




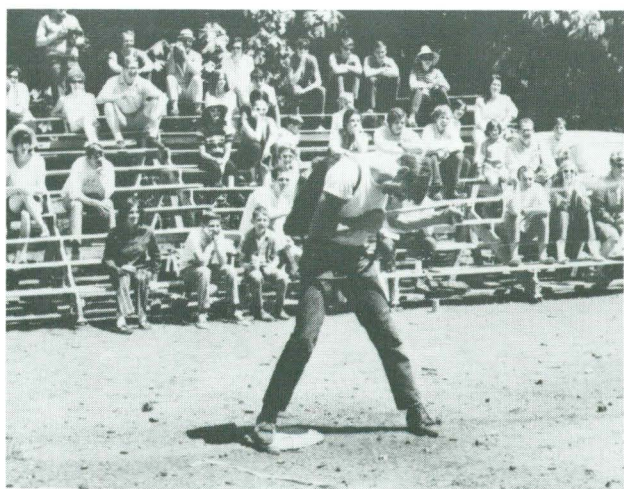
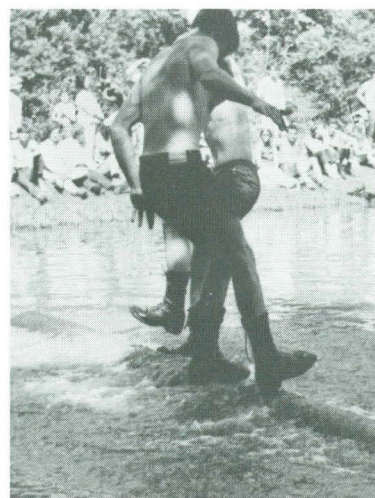
## SPRING THAW



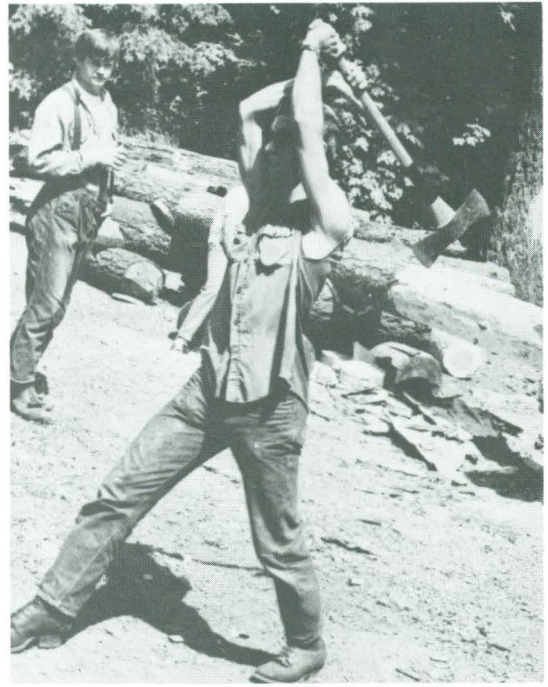




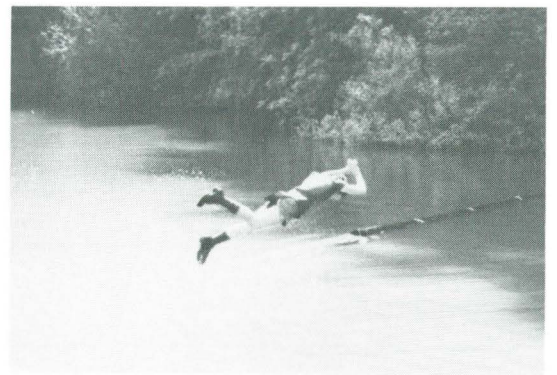




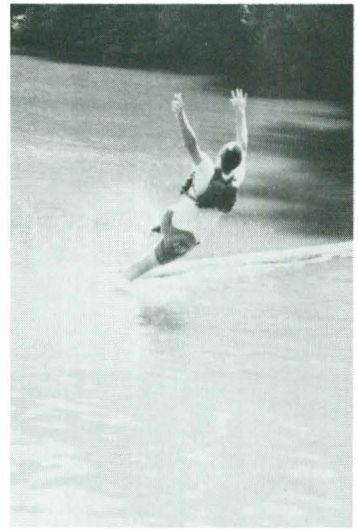
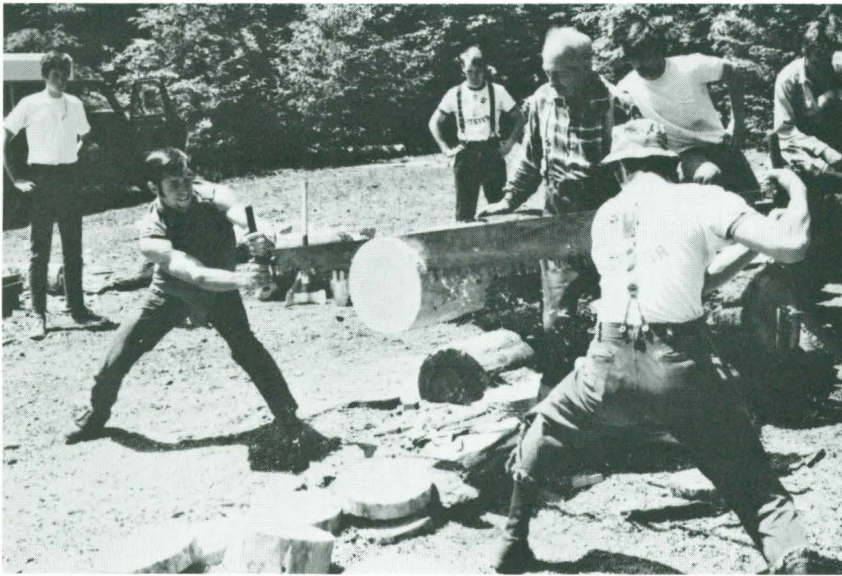








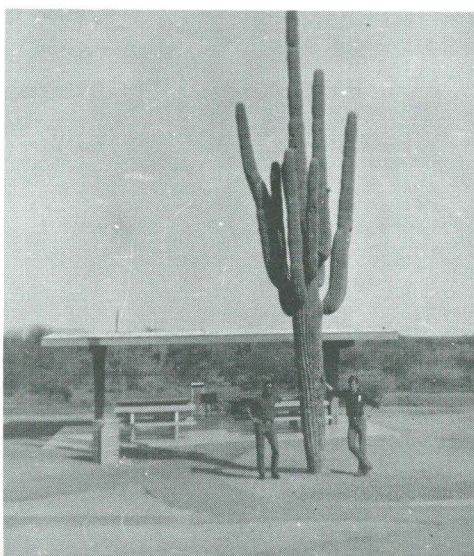
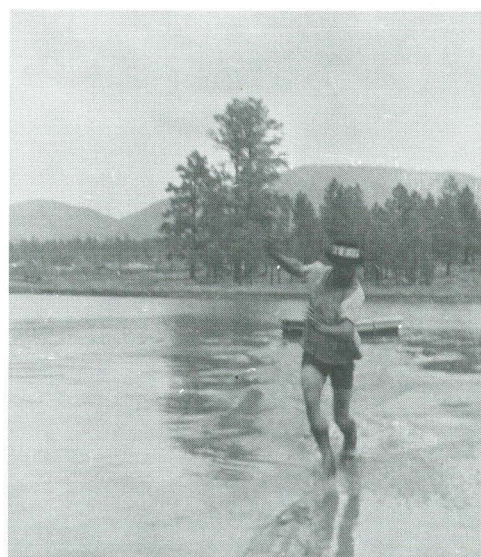




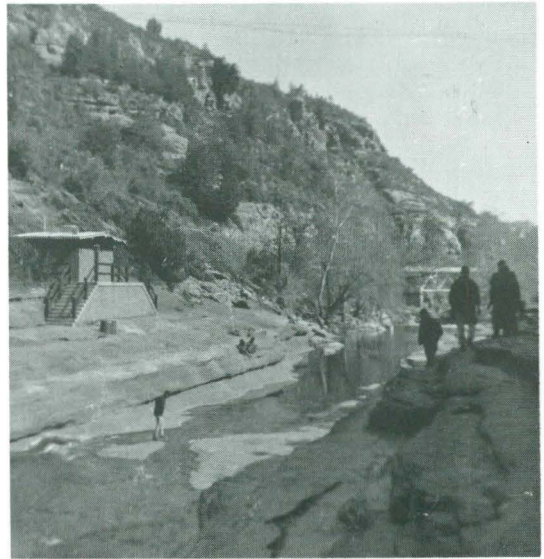




## A. W. F. C. Conclave





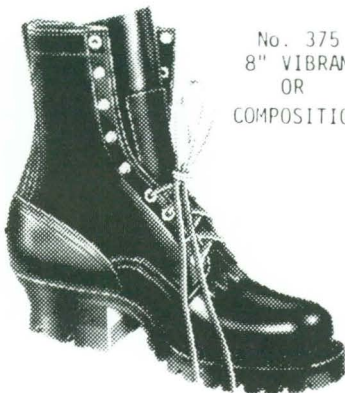


Northern Arizona University in Flagstaff, Arizona hosted the 1970 A. W. F. C. Conclave. Members attending were Al Wilson, Pat Tomlin, Gary Johnson, Steve Brown, Bob Gillespie, Chuck Alluisi and Russ Lawrence.

**WHITE'S SHOE SHOP**  
 MAIN AVE. & STEVENS ST. **ARCH EASE** **SPOKANE, WASH. 99201**



*Over 50 Years Manufacturing*  
**HAND MADE**

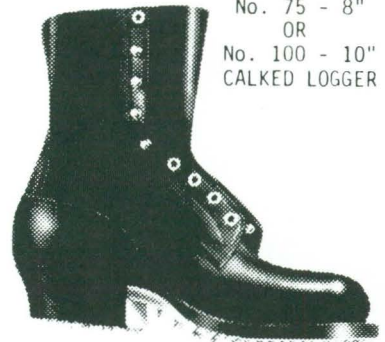


No. 375  
 8" VIBRAM  
 OR  
 COMPOSITION

Smoke Jumper and Forester



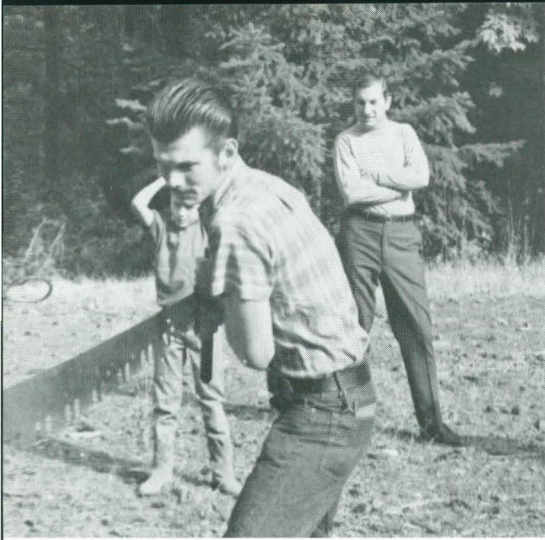
No. 690 LEATHER OR  
 COMPOSITION SOLE



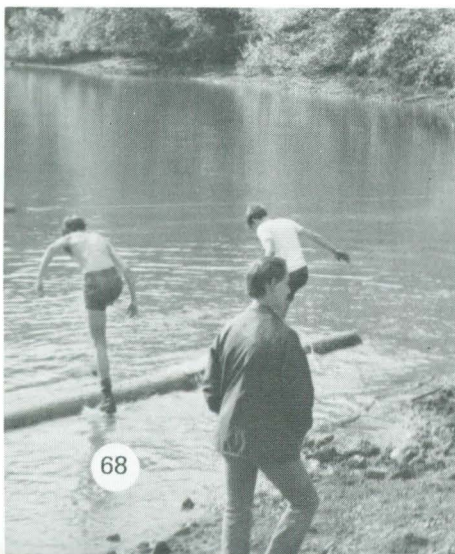
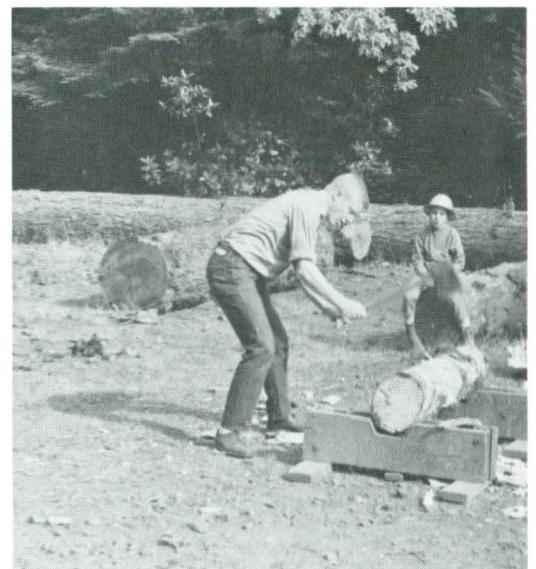
No. 75 - 8"  
 OR  
 No. 100 - 10"  
 CALKED LOGGER

**Send for Catalog**





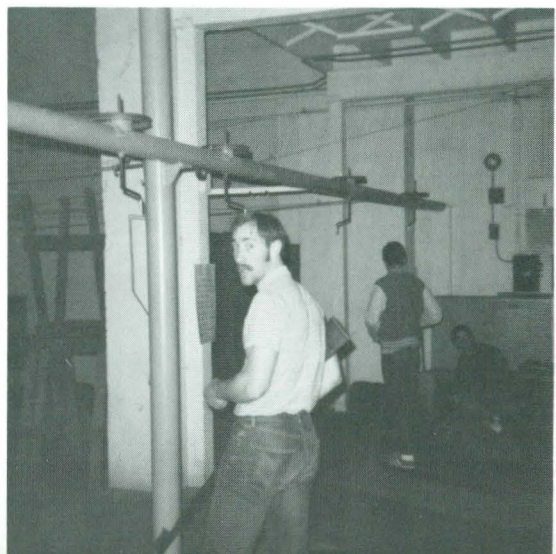
## MAC FOREST DAY







## TURKEY SHOOT





# TUG

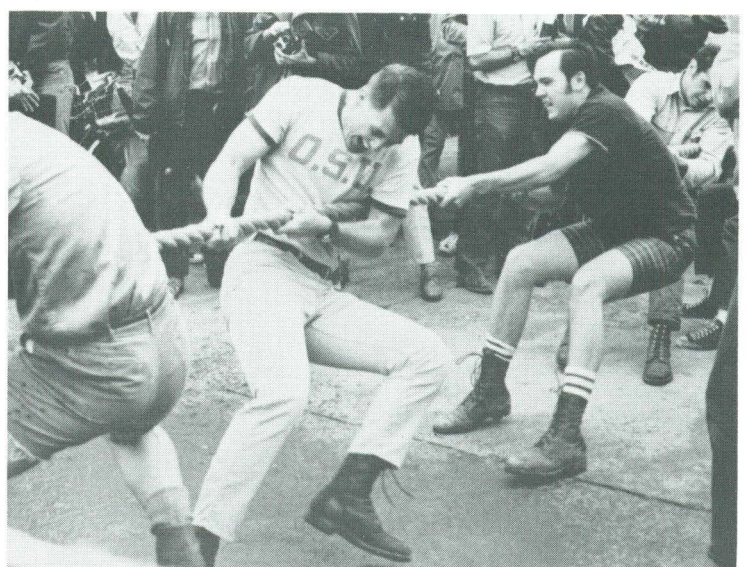
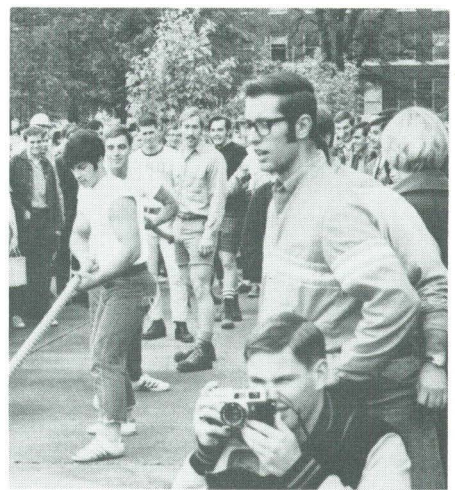


-O-

# WAR









# Fernhopper Day



The 39th annual Fernhopper Banquet was held at 5:30 March 6 and served as the culmination of a full day of activity for alums and students alike. Committee heads were as follows: Al Hemrich, General Chairman; Ed Hanson, Decorations; Steve Cole, Entertainment; Tim Donovan, Fernhopper Seminar; Beth Chaffey, Invitations; Ray Hewitt, Publicity; Jim Sorenson, Registration; Doug Wells, Reception; and Xi Sigma Pi, Special Events.









# **Recipients of Graduate and Undergraduate Scholarships and Fellowships**

## **Undergraduate---**

Autzen Foundation Scholarship  
Al Heyer

Cole, Clark & Cunningham Scholarship  
Dan Maul

Crahane Memorial Scholarships  
Don Baillie  
Pat Moore

Crown-Zellerbach Foundation Scholarships  
Rocky James  
Brian Tuor

Floyd Hart Memorial Scholarship  
Doug Stout

Oregon Logging Conference Scholarships  
Phil McIntyre  
James McRae  
Pat Norris  
Marc Vomocil

W.R. Randall Memorial Scholarship  
Norman Michaels

ITT Rayonier Inc. Foundation Scholarship  
Dave Eberhardt

St. Regis Paper Co. Scholarships  
Tim Donovan  
Brian Tuor

Sierra-Cascade Logging Conference Scholarship  
Marty Frank

John R. Snellstrom Memorial Scholarship  
Rod Remington  
Louis House

South Santiam Educational & Research Project Scholarships  
Dennis Golik  
Kerry Hart  
Randall Scott  
Terry Stouder  
Ron Iff  
Tim Kosderka  
Richard Gustafson  
John Berry  
Brent Hennings  
Dave Bateman  
Marty Frank  
Bill Ruppert  
Larry Simons  
Harry Sondag  
Robert Halbert  
Neil Eldridge

Margaret O. Starker Memorial Scholarship  
Jerry Hensley

Max D. Tucker Scholarships  
Hal Hagglund  
Bob Horton  
Arthur Skach

Willamette Industries Work-Scholarship  
Phillip McIntyre

## **Graduate---**

South Santiam Educational & Research Project Fellowships  
Henry Fang  
Harold Holbo  
Ken Johnson  
Olaf Knezivich  
John Litvay  
Ken Reed  
Wolfhard Ruetz  
Michel Thevenon  
Warren Webb  
Jose Zerrudo

Weyerhaeuser Company Foundation Scholarships  
Allan Drew  
Joe Karchesy

Mary J. McDonald Memorial Fellowships  
Olaf Knezivich  
Peter Lancaster



# Students Not Pictured

## SENIORS

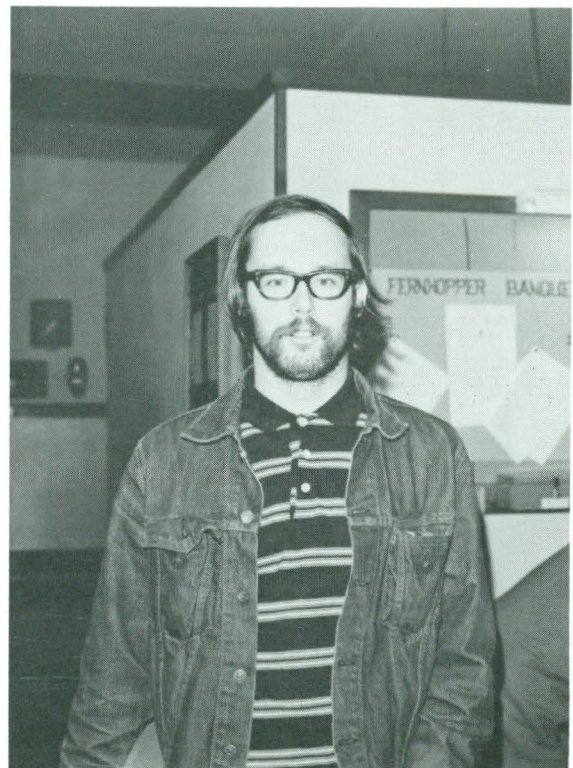
Ashby, Gerald M.-FE  
Bainbridge, Terrell J.-FE  
Billing, Scott R.-FM  
Bunnell, Sheridan J.-FP  
Bush, Nicholas E.-FP  
Busse, Donald R.-FM  
Dupue, Thomas E.-FE  
Diehl, Martin R.-FE  
Dierling, Edward C.-FP  
Dow, James E.-FE  
Ehrensing, Keith T.-FP  
Ekelund, Philip R.-FE  
Erickson, Bruce H.-FP  
Farm, Lin Y.-FM  
Frazier, James M.-FM  
Garland, Gerald M.-FM  
Golik, Dennis M.-FP  
Graae, Neil H.-FM  
Graham, Terry R.-FE  
Hart, Kerry A.-GP  
Hensley, Jerome D.-FE  
Hollowell, Ottis W.-FM  
House, Louis O.-FM  
Jones, Logan B.-FE  
Kelly, Kent S.-FM  
Kleinhoff, John R.-FM  
Kramer, Kendall D.-FE  
Kreimeyer, Gregory L.-FM

Larson, Carl E.-FE  
Lee, Michael R.-FM  
Lilly, John E.-FM  
Makinson, Dwight L.-FE  
Margerum, Michael D.-FE  
Marrs, Norman D.-FP  
Mazzie, William N.-FE  
Molitor, Craig E.-FE  
Musselman, Victor P.-FM  
Nelson, Robert L.-FM  
Nettleton, Donald M.-FM  
Peterson, Jim S.-FE  
Ray, Leon E.-FM  
Reno, Rex-FM  
Robinson, Thomas E.-FE  
Rose, Clarence W.-FE  
Scott, Randall J.-FP  
Shuford, Tom S.-FP  
Sigers, Denzil B.-FE  
Stouder, Terry G.-FE  
Thomas, John E.-FE  
Thomas, Steven R.-FM  
Twiss, John C.-FM  
Walker, Ralph D.-FM  
Weisensee, Joseph F.-FM  
Winter, Albert J.-FM  
Witte, Donald G.-FE

## JUNIORS

Babbitt, Michael C.-FM  
Ball, Frank V.-FM  
Barnes, James R.-FE  
Bartlett, Edward D.-FM  
Berry, John D.-FE  
Bevan, Ronn M.-FM  
Blair, Larry W.-FM  
Botens, Steven R.-FE  
Case, Jeffrey A.-FM  
Craig, Raymond S.-FE  
Crotts, James W.-FE  
Doran, Brian L.-FM  
Emerson, John M.-FM  
Ewen, Thomas C.-FP  
Forester, William A.-FM  
Fowles, Gary L.-FM  
Frost, Claude, A.-FM  
Gustafson, Richard D.-FM  
Hartman, Thomas B.-FM  
Horner, Thomas D.-FM  
Hurd, Theodore E.-FM  
Johnson, Gary V.-FM  
Josi, Timothy E.  
Kimberlin, Richard O.-FM  
Krance, Robert C.-FE  
Krenz, Alan P.-FM  
Luhman, James R.  
Lyons, Melvin C.-FM  
McDougall, Neil A.-FE

McIntyre, Philip R.-FP  
Mahaney, Patrick J.-FP  
Marr, William J.-FM  
Martin, Peter C.-FM  
Mayo, James H.-FM  
Meeker, John I.-FP  
Meiners, Alan H.-FM  
Meteauer, Larry A.-FM  
Michaels, Norman M.-FM  
Mills, Thomas A.-FM  
Oester, Paul T.-FM  
Okada, Dale A.-FM  
Pagni, Dennis G.-FM  
Perry, Gregg T.-FP  
Phillips, Lawrence W.-FP  
Pickering, Bruce G.-FM  
Premo, Jerry L.-FM  
Roberts, Francis A.-FM  
Roelke, Robert C.-FM  
Rowe, Harold D.-FM  
Saari, John R.-FE  
Sachet, Anthony S.  
Saul, John T.-FE  
Schroeder, Glenn A.-FP  
Shanower, Wade A.  
Weldon, James J.-FM  
Wendell, Michael L.-FM  
Wise, Alan E.-FM





## SOPHOMORES

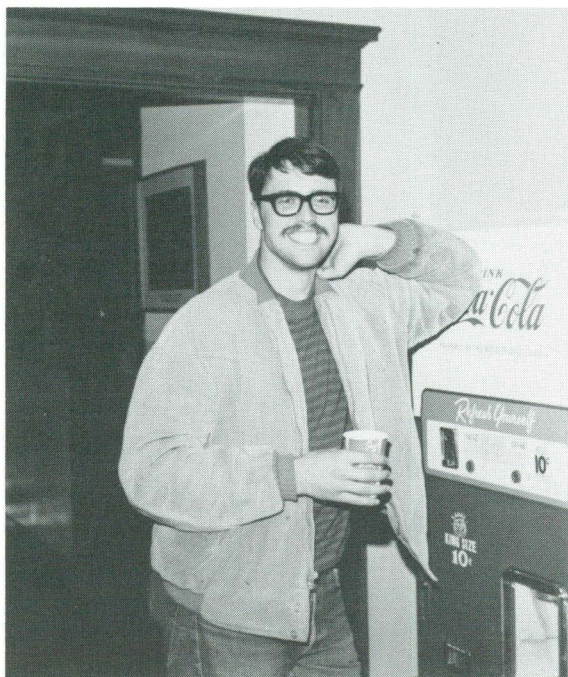
Alford, Rex R.—FM  
 Annis, Barry A.—FM  
 Aschenbach, Jon R.—FM  
 Benneditti, Craig L.  
 Bickers, William B.—FM  
 Bjerke, Daniel O.  
 Boley, Maurice C.—FE  
 Bowers, David G.—FM  
 Brevig, Rodney E.—FM  
 Brown, Gregory K.—FM  
 Carter, William D.—FM  
 Cebula, Jacob P.—FM  
 Childs, Kenneth R.—FM  
 Cicerich, Michael F.—FE  
 Courtright, Emmett V.—FM  
 Creedican, Patrick F.—FE  
 Crites, Gregory A.—FE  
 DeArmond, David M.—FM  
 Dosskey, Michael G.—FM  
 Duncan, Joseph E.—FM  
 Duncan, Rush Fuquay—FE  
 Fallon, Michael J.—FE  
 Greenman, Dennis D.—FM  
 Halbert, Robert J.—FM  
 Hales, Ronald A.—FE  
 Harris, Gregory D.—FM  
 Harris, Richard G.—FM  
 Imhoff, Thomas W.—FE  
 Johnston, Glen A.—FM  
 Johnston, Jess M.—FM  
 Klausman, David L.—FE  
 Leshin, Ralph I.—FM  
 Lorence, David R.—FE

Madison, David K.—FM  
 Marre, William L.—FM  
 McCormick Howard S.—FM  
 Newell, James D.—FE  
 Norris, Patrik G.—FE  
 O'Connor, Gregory F.—FP  
 Pack, William J.—FM  
 Potter, David A.—FE  
 Preble, James M.—FM  
 Price, Steven J.—FM  
 Pursley, Lloyd M.—FE  
 Schwenke, Greg I.—FM  
 Scott, Steven F.—FM  
 Shires, Donald W.—FP  
 Shonnard, Christopher J.—FM  
 Simons, Lawrence M.—FM  
 Sleezer, William F.—FM  
 Smith, Scott E.—FM  
 Sondag, Harry R.—FP  
 Sparks, Jerald C.—FE  
 Stacy, Steven M.—FM  
 Studebaker, Danny D.—FM  
 Tippet, Scott T.—FM  
 Twombly, Eric D.—FM  
 Walker, Terrin L.—FM  
 Warmath, J. Thomas—FM  
 Watterson, Dennis L.—FM  
 Westover, Delwin R.—FM  
 Wicks, Gary D.—FE  
 Wright, Gary N.—FM  
 Yarbrough, Richard R.—FE

## FRESHMEN

Allen, Stephen C.  
 Anderson, Michael M.  
 Arenz, Christopher T.  
 Baillie, Donald G.  
 Barnett, Dwight D.  
 Barnhart, William C.  
 Blacketer, Kenneth R.  
 Boschetto, Mauro J.  
 Bradetich, Michael S.  
 Brasfield, Randolph B.  
 Briody, Thomas F.  
 Bronson, George E.  
 Browning, David E.  
 Casinger, Thomas E.  
 Circle, Marlin L.  
 Colvin, Ted A.  
 Creel, Dennis P.  
 Dahne, John W.  
 Day, Curtis R.  
 Deprez, David L.  
 Dobson, Charles E.  
 Doede, David L.  
 Fallow, Gregory O.  
 Feigelson, Leroy N.  
 Fitzgerald, Tom B.  
 George, Dale K.  
 Gifford, Douglas W.  
 Godfrey, Bret H.  
 Graham, Kenneth L.  
 Gregg, Ben  
 Guttridge, Alan J.  
 Hagglund, Hal G.  
 Hall, Thomas L.  
 Hamilton, Cyrus S.  
 Hannah, Robert D.  
 Heidenrich, Louis L.  
 Hemphill, Keith H.  
 Hilbruner, Michael W.  
 Homer, Robert W.  
 Hutchinson, J. Randal  
 Jackson, Scott A.  
 Jones, Westly R.

Kight, John G.  
 Knottingham, David J.  
 Later, Paul A.  
 Lehnus, James S.  
 McKinnie, William A.  
 Mayer, Edwin C.  
 Messer, Kenneth L.  
 Miehle, David C.  
 Mielke, Manfred E.  
 Mills, Michael E.  
 Moore, Robert A.  
 Navarre, David L.  
 Neely, Michael J.  
 Nicholes, Steven A.  
 Ochs, Ronald G.  
 Olsen, Kurt E.  
 Opdahl, Steve  
 O'Toole, Randal L.  
 Paresi, Mark S.  
 Petitmermet, John A.  
 Phillips, Daniel J.  
 Renaghan, Donald J.  
 Richardson, Clifford J.  
 Sachet, James A.  
 Schaffner, Mark A.  
 Sheron, Laurence F.  
 Shields, Richard A.  
 Simons, Robert F.  
 Skach, Arthur R.  
 Steinfeld, David E.  
 Thelander, Jann G.  
 Tufford, Michelle L.  
 VanCleave, John A.  
 Vanderhoff, Bradley A.  
 Vondrak, Otto J.  
 Wall, Timothy E.  
 Weir, Robert C.  
 Willard, Keith R.  
 Williamson, Denis M.  
 Wilson, Michael H.  
 Wolfe, Ted Lynn







1939 World's Champion, Ben Lentz

## Hello, Mr. Ecologist . . .



Your new degree says Forestry and that means you are also an Ecologist . . . a cat who understands the relationship of living organisms with environment . . . and knows what to do to improve it.

Ecology is a must for civilization . . . Water Quality Improvement, Flood Control, Reforestation, Development of More and Better Recreational Areas, Soil Conservation and Improvement and the production of timber volumes necessary to satisfy the demands of the vast market are all vital ecological projects and things you are trained to handle.

Mr. Forester-Ecologist, we, at The Ben Meadows Company, salute you. We are proud to have a part in helping you do your "thing."

For over 15 years foresters in all 50 states have Depended on Ben for equipment and supplies . . . the newest and best . . . delivered quickly . . . priced right . . . and fully guaranteed.

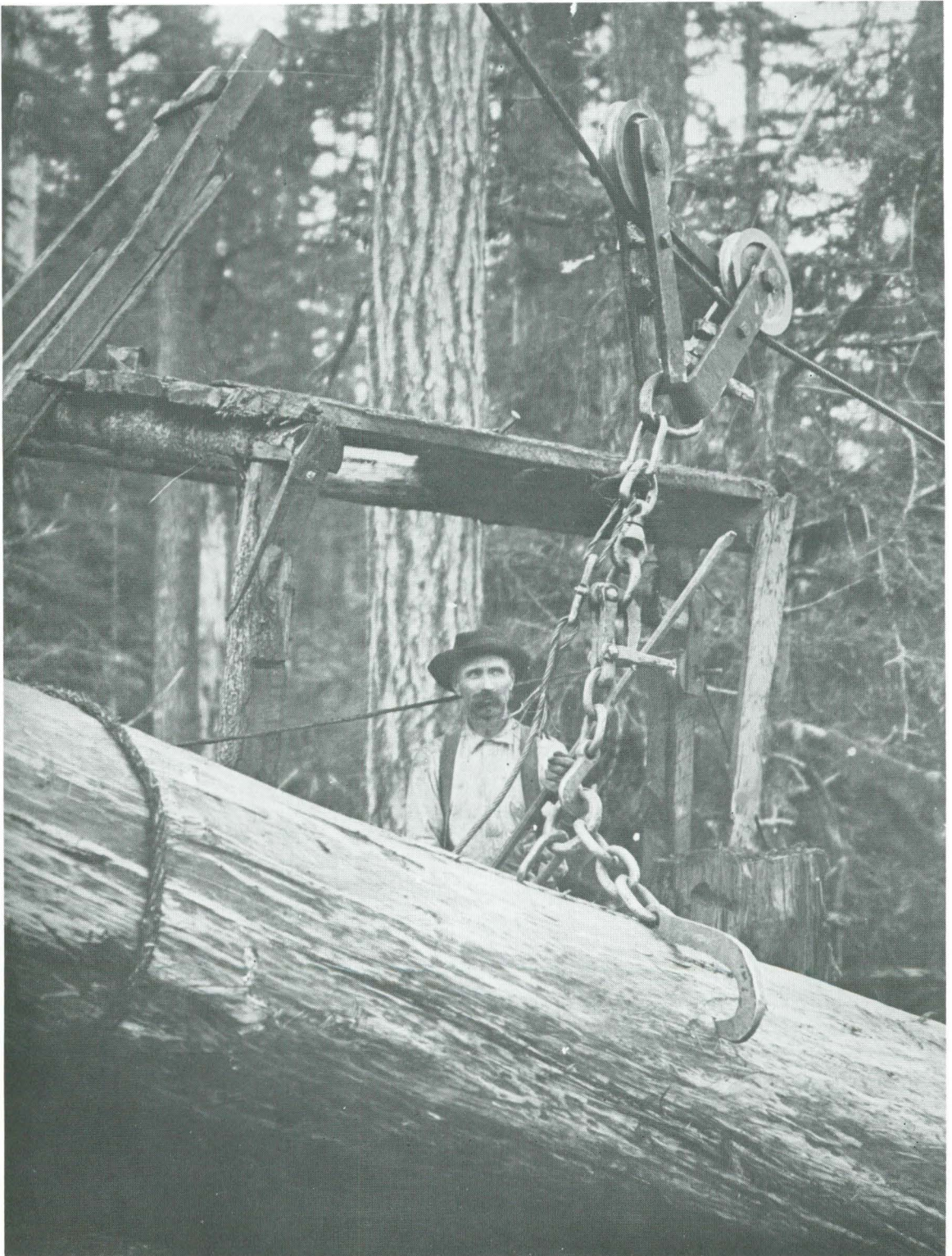
Write today for your catalog . . . over 500 pages crammed with time, money and labor saving things. If a forester needs it, it's in Ben's catalog.

*The catalog is free!*

THE  
**BEN  
MEADOWS  
COMPANY**  
553 AMSTERDAM AVE. N.E.  
ATLANTA, GEORGIA 30306

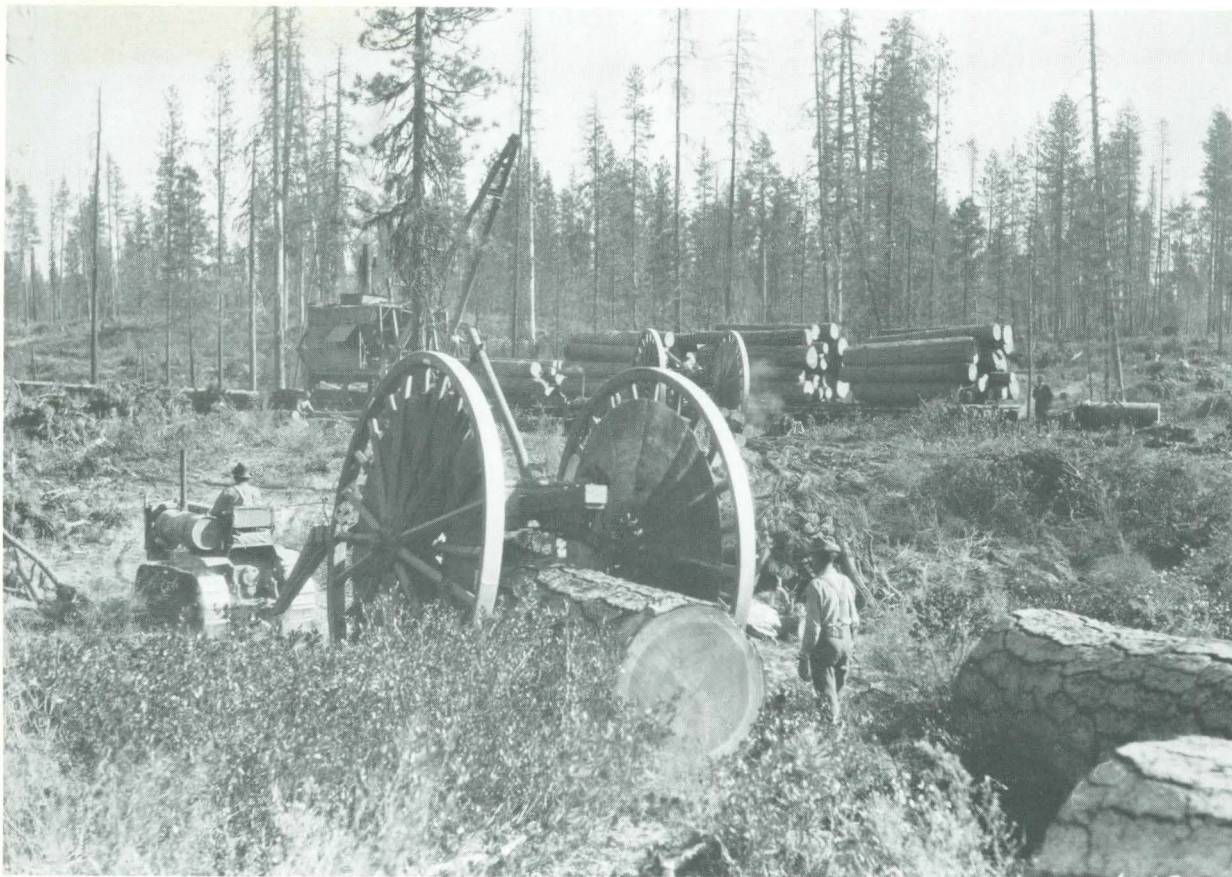






First skyline in Pacific Northwest. The year was 1899, and the company was Bridal Veil Lumber Company.





Two "Big Wheels" in action in 1928







As we come to the end of this Annual Cruise and to this year, we prepare to move the School of Forestry to a new building. Many experiences that have occurred in the Old Forestry Building will be forgotten, but many will also be remembered, and many more still will be experienced in the New Forestry Building in the future.















