

United States Department of the Interior
National Park Service

National Register of Historic Places Continuation Sheet

Section number Photographs Page 1

Photographers: Sally Donovan
Rob Dortignacq

Date of Photographs: May 2006

1. Looking west, contextual view of corner of lot and roof-line of Goldsmith House.
2. Looking north at driveway with west boundary fence to left and house main entrance to right.
3. Looking north at fenced yard east of house.
4. Looking northeast at west façade.
5. Looking southeast at north and west façades (garage).
6. Looking northwest at east façade and patio.
7. Looking southwest at east façade and covered patio.
8. Looking northwest at east façade (kitchen to garage).
9. Looking southwest at east façade and walkway near garage.
10. Looking northwest at south façade.
11. Looking east at front entrance.
12. Looking east at entry lights, "elephant bells".
13. Looking north at E patio recessed light well.
14. Looking south at E patio bracket.
15. Looking southeast at entrance screen.
16. Looking southwest at living room.
17. Looking southeast at living room.

Goldsmith, Alan and Barbara, House
Name of Property

Multnomah Co., OR
County and State

NPS Form 10-900-a

OMB Approval No. 1024-0018

United States Department of the Interior
National Park Service

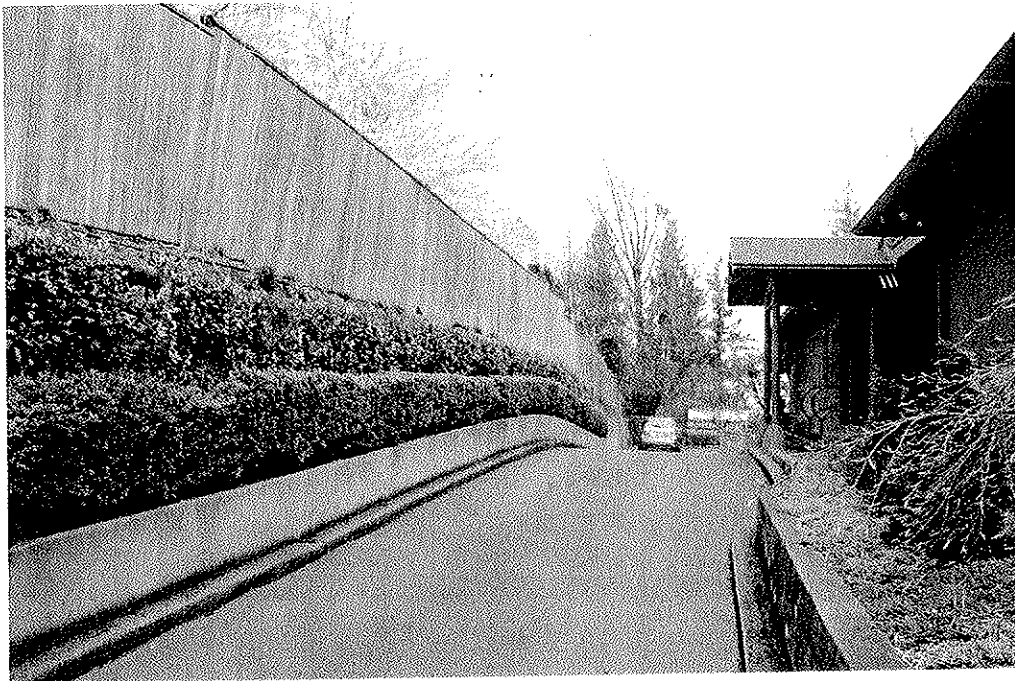
National Register of Historic Places Continuation Sheet

Section number _____ Photographs _____ Page ____2____

18. Looking northeast at den.
19. Looking northwest at kitchen.
20. Looking southwest at interior barbeque in kitchen.
21. Looking southwest at dining room built-in cabinet.
22. Looking east at master bath window.
23. Looking north at master bath sink.
24. Looking southwest at pond and rock steps.
25. Looking northeast at rock stairs along front driveway.



1



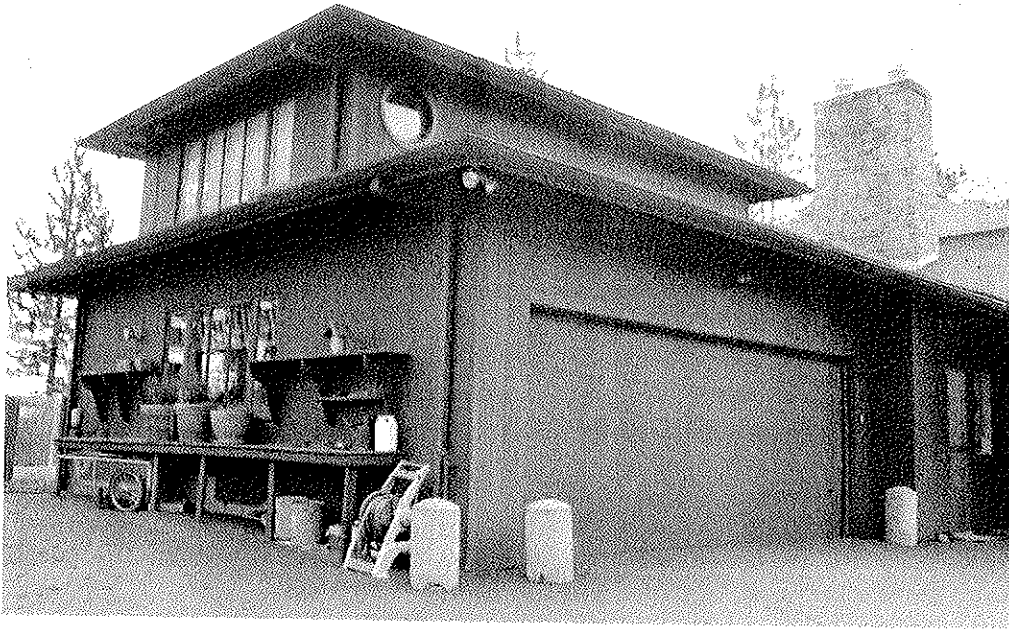
2



3



4



5



6



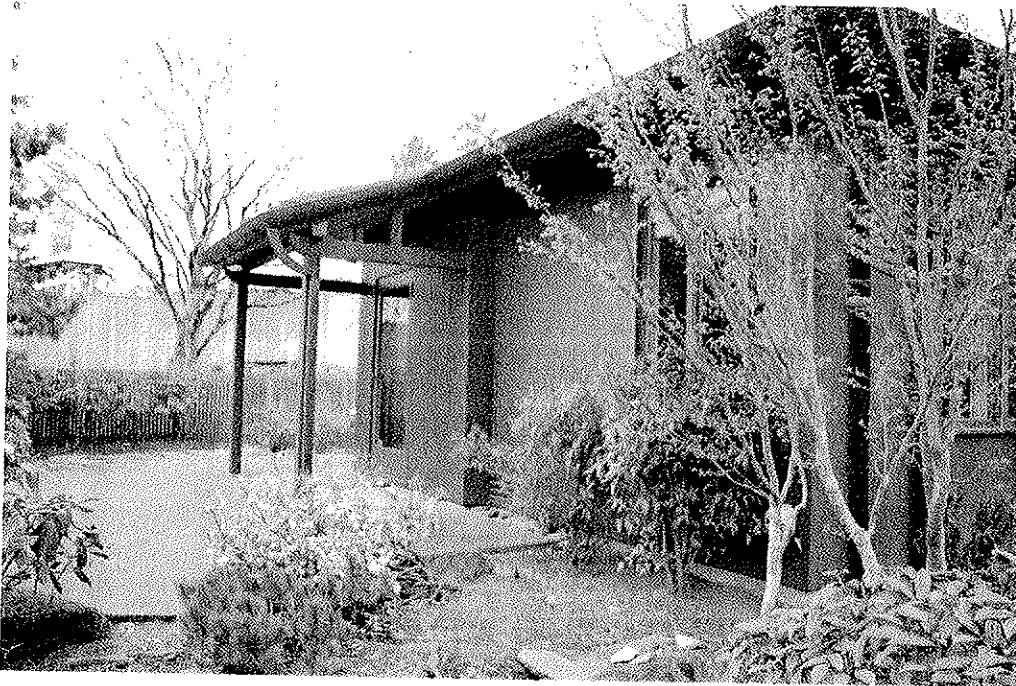
7



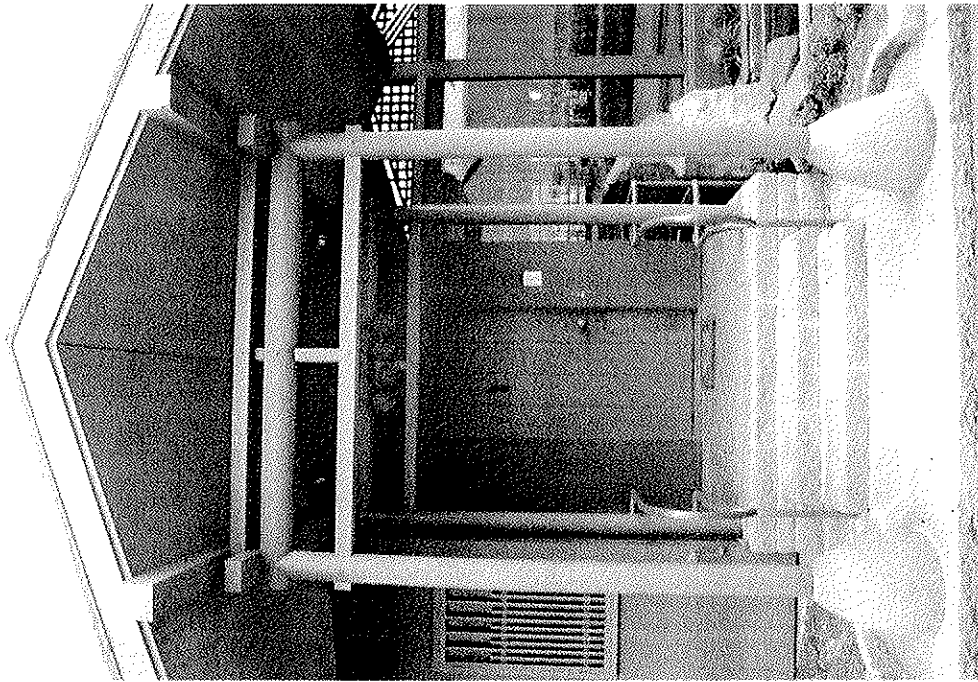
8



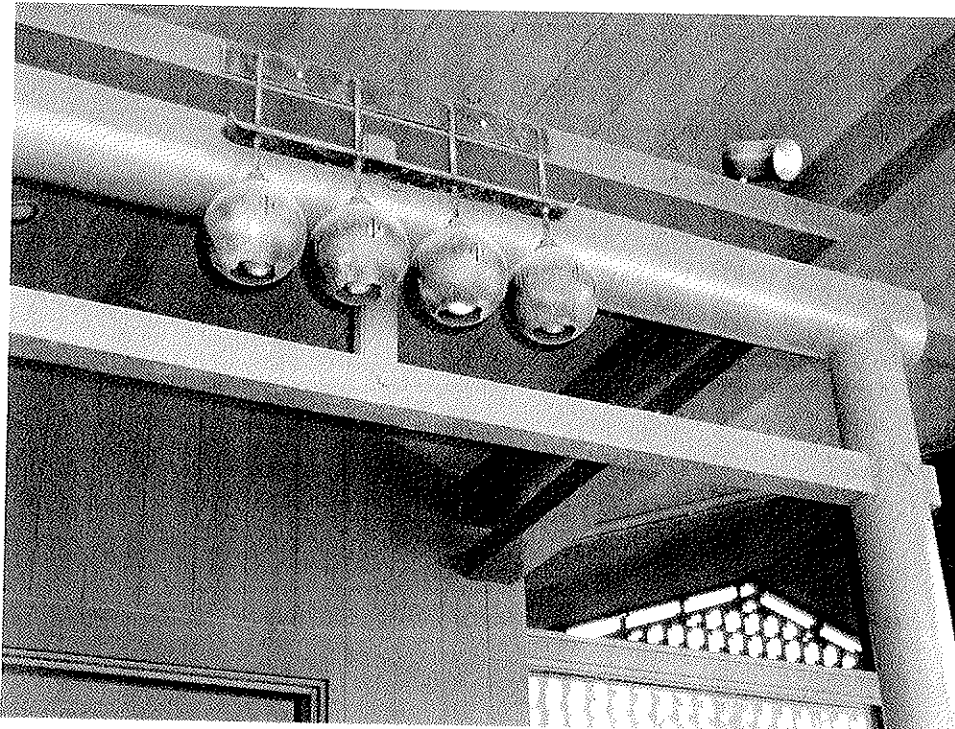
9



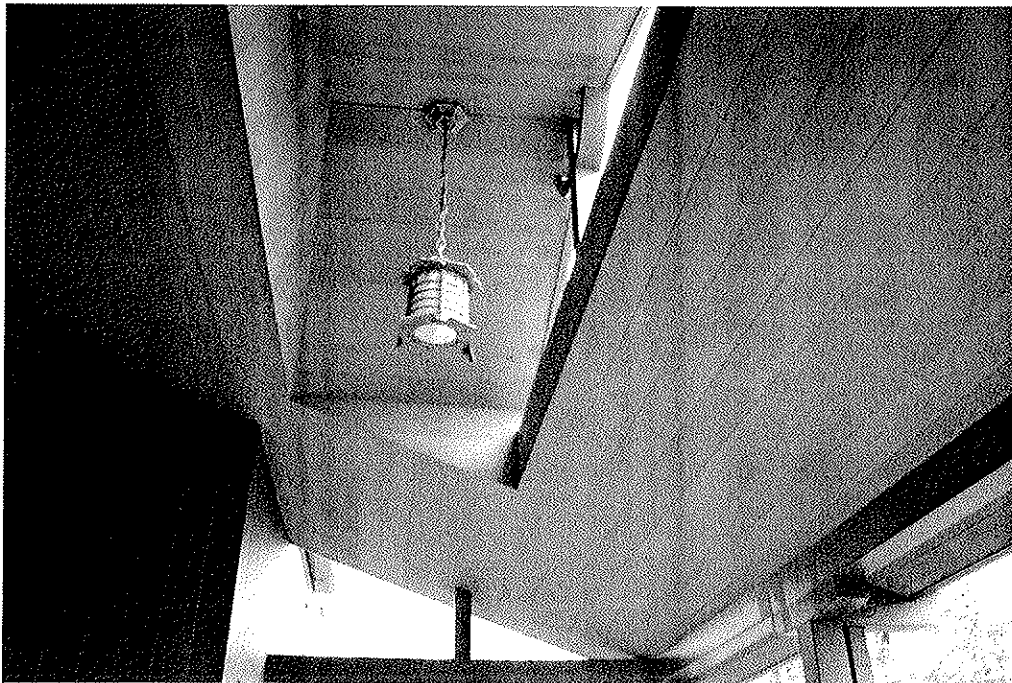
10



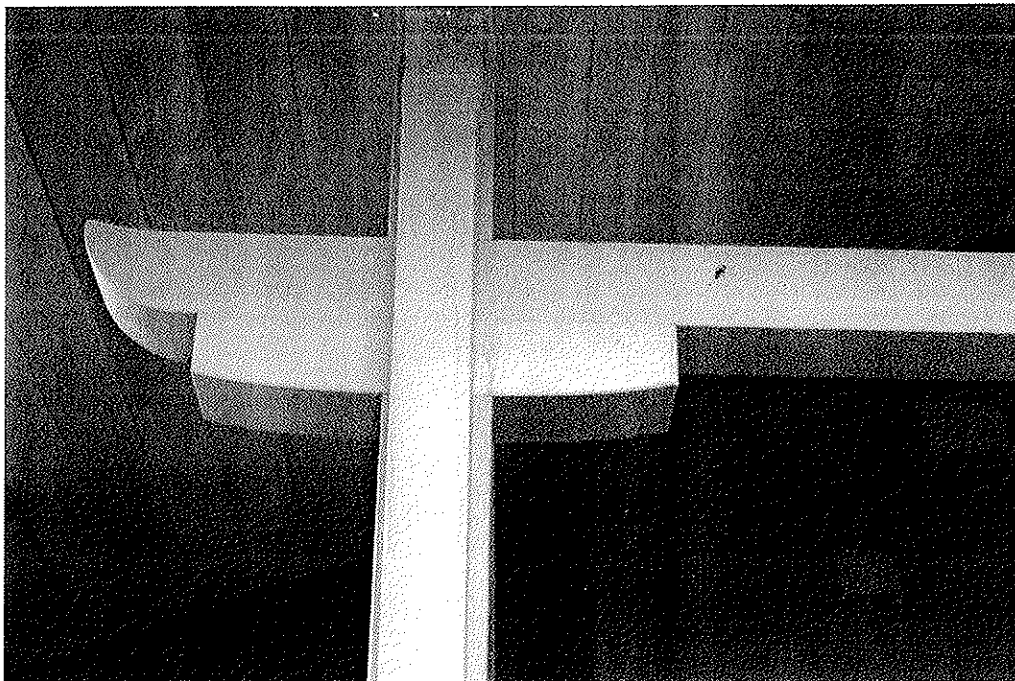
11



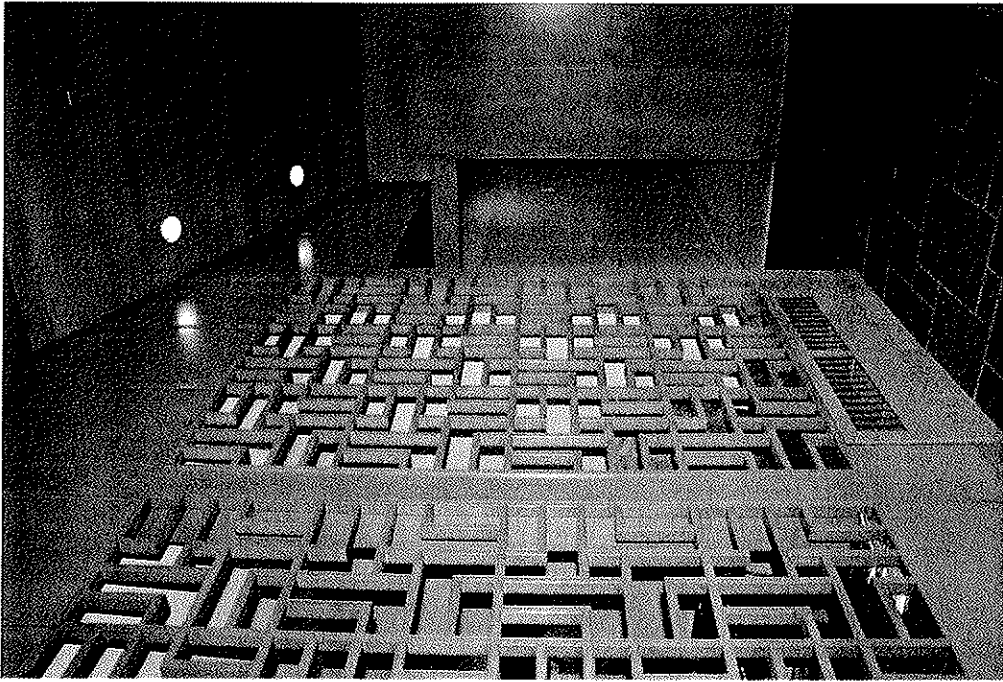
12



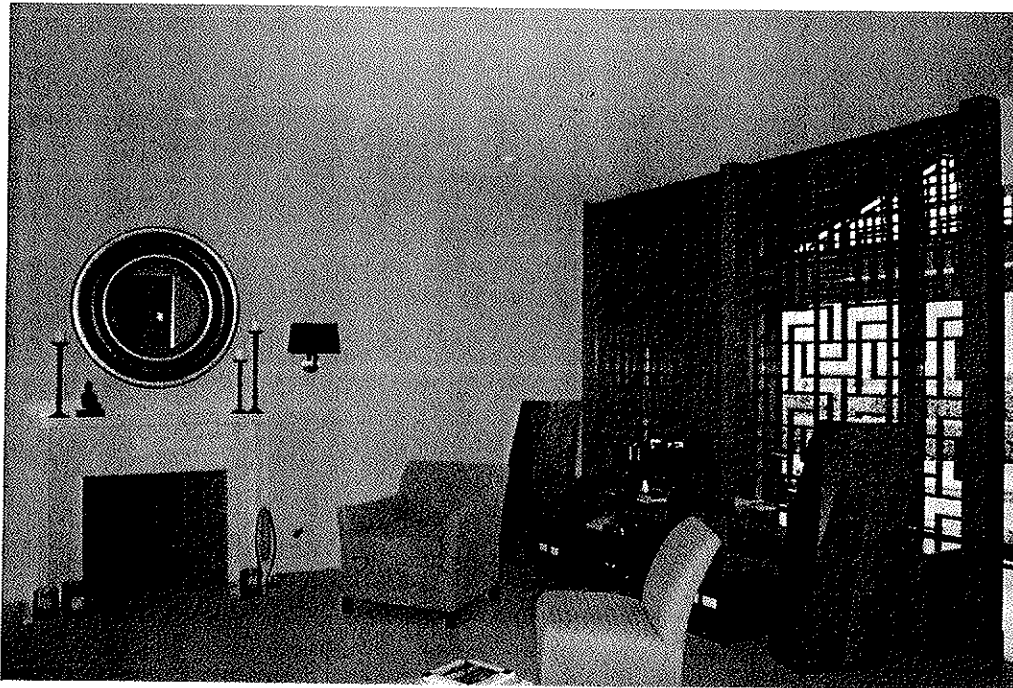
13



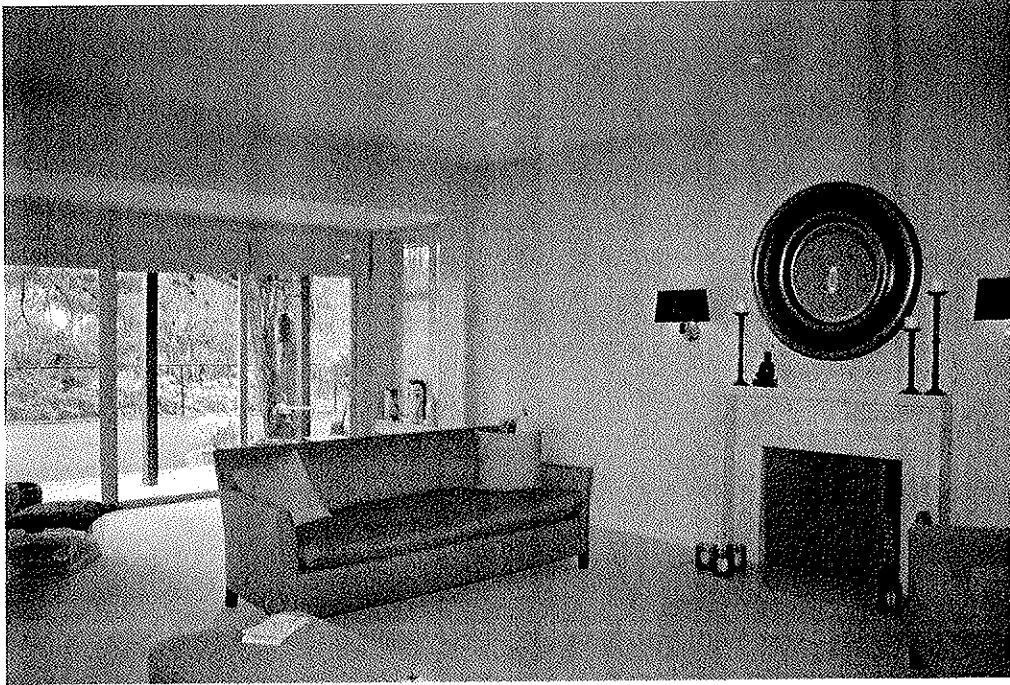
14



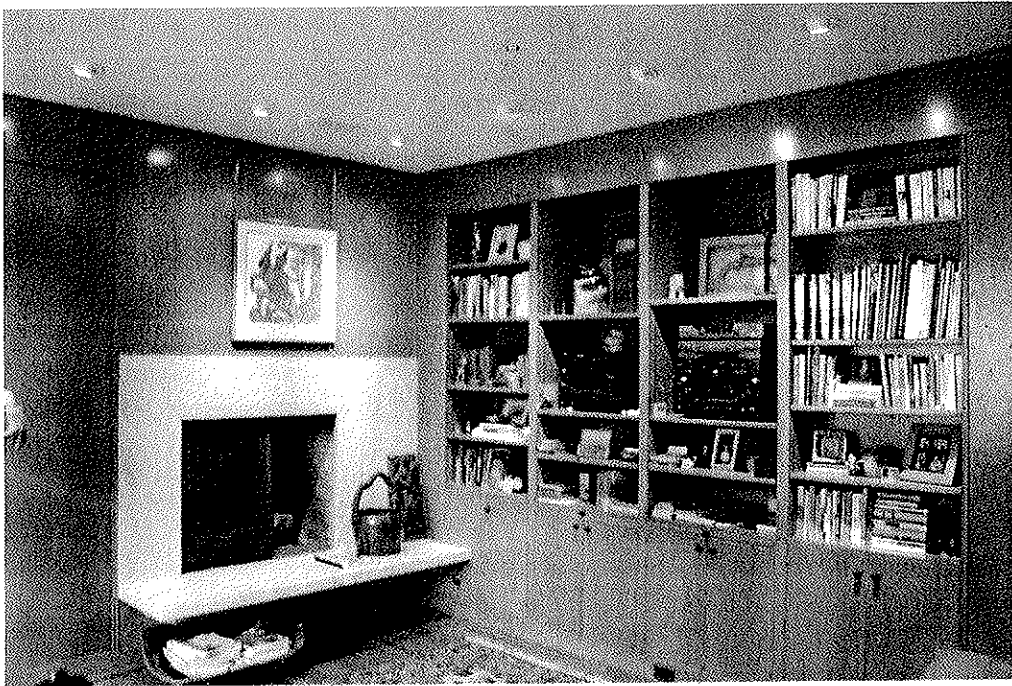
15



16



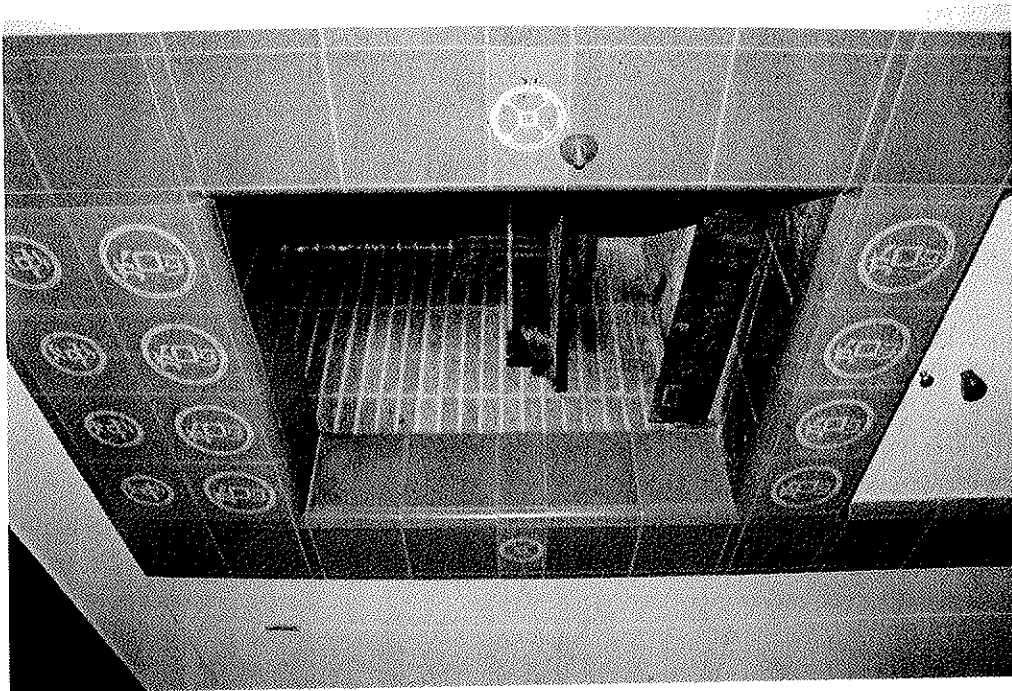
17



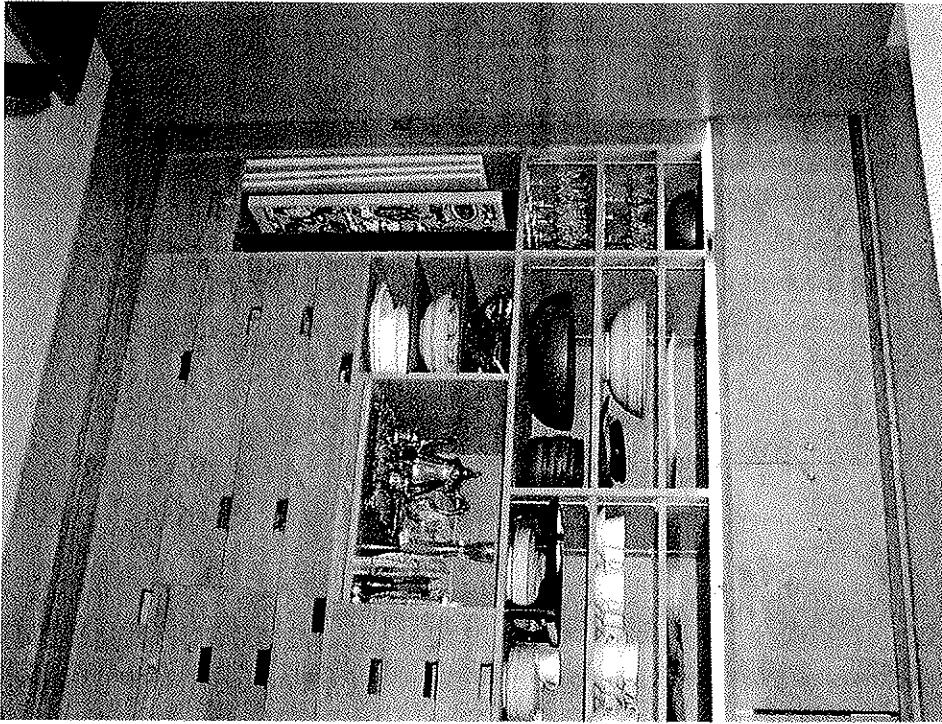
18



19



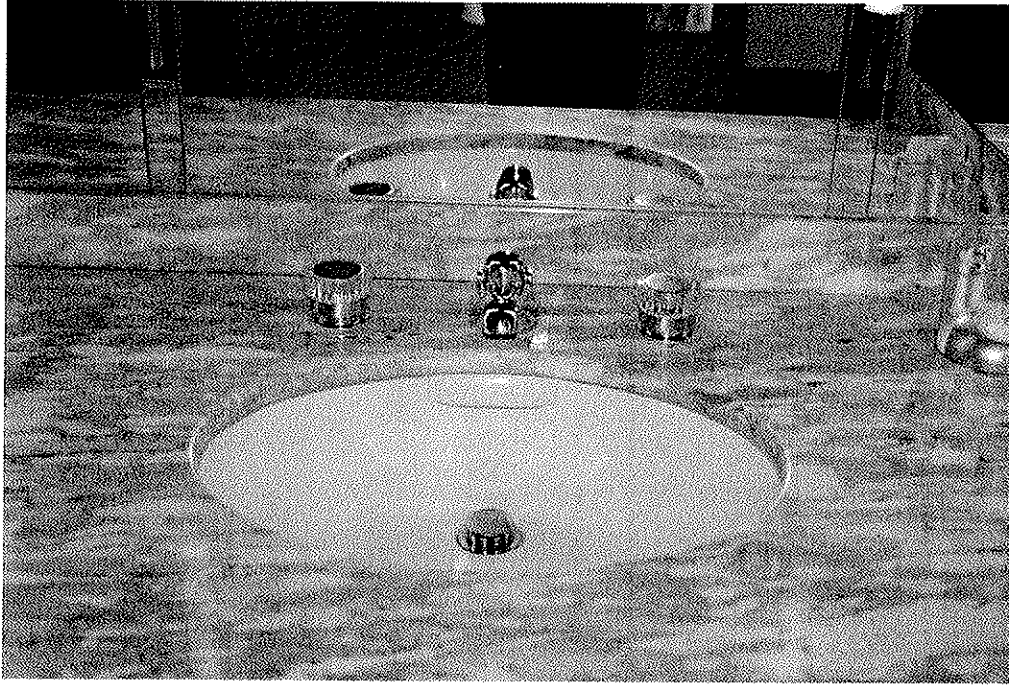
20



21



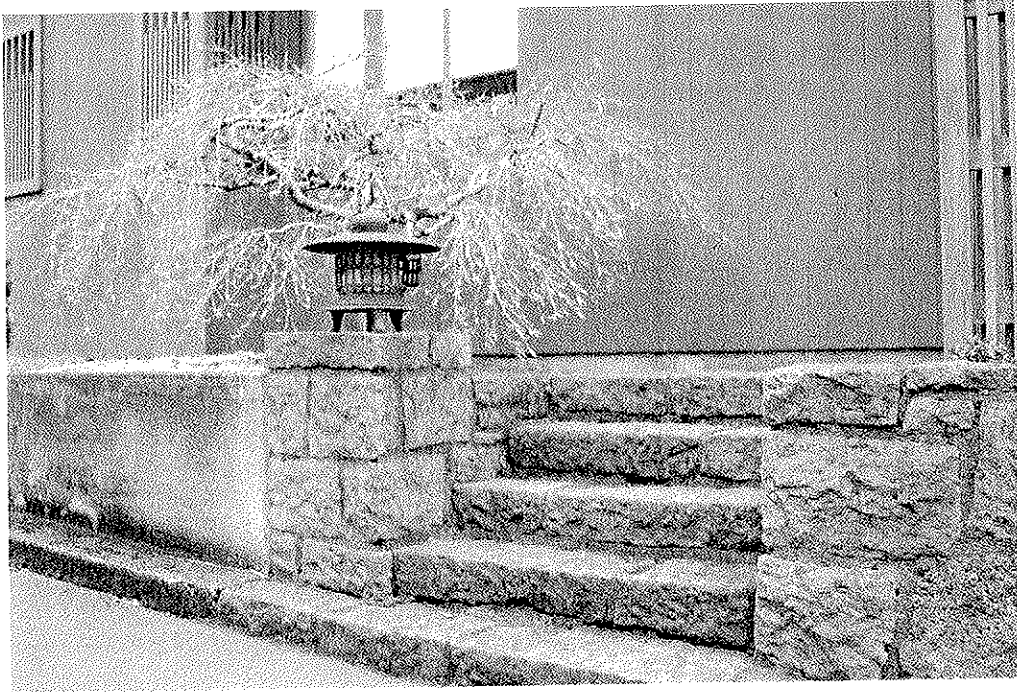
22



23



24



25